

## **Historic, Archive Document**

Do not assume content reflects current scientific knowledge, policies, or practices.



# Fairmount Gardens

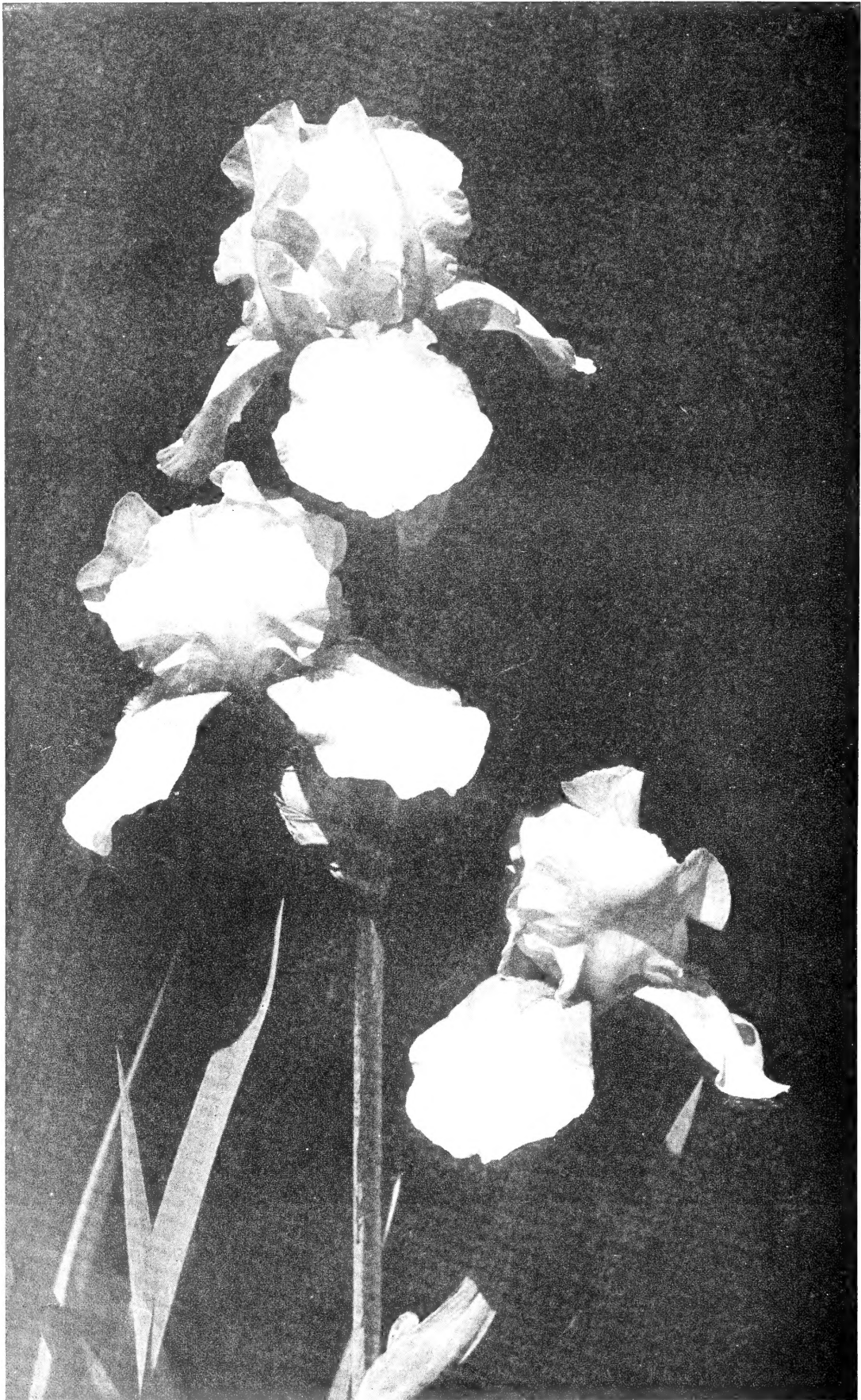
LOWELL, MASSACHUSETTS

LIBRARY RECEIVED  
★ MAY 12 1949 ★  
U.S. Department of Agriculture

1  
9  
4  
9



IRISES  
HEMEROCALLIS  
HOSTAS  
POPPIES



**1919 Bearded Iris Introduction**  
**STAR SHINE**

See Page 4 for Description

PHOTO BY CASSEBEER

# Foreword

## GREETINGS FOR 1949

Spring is here again! In the whole cycle of the year, these first days of spring are most heart warming for they dispel our jaded winter spirits and give a golden promise to the coming of summer.

The theme of the magazine *House and Garden* is "Good Gardening is Good Living", and I think all gardeners would do well to adopt it as their own for in these turbulent times our home is at the root of our living, and our gardens can become a refuge from the perplexing problems of this topsy-turvy world.

Each year, we endeavor to see most of the newest iris, and in doing this travel to many parts of the country, selecting seedlings from different hybridizers that we think worthy of being grown in our garden with the idea of introducing them to the public if they prove distinctive from other varieties, and are dependable in our northern climate. Also we use the same discrimination in choosing iris that are introduced through other gardens, for we wish to list only those that are worthy garden subjects.

After most bearded iris you will see initials and numbers, by looking on page 2 of the catalogue you will find the definitions covering them. Most of the awards have been given by the American Iris Society, and the numerical ratings that I have included are those of A. I. S. judges previous to 1947 when our old system of rating was discontinued for I am convinced we need ratings that the average gardener can understand so if they are not familiar with the different varieties they can gain some idea of their value.

This year we have the pleasure of adding another breeder of iris to those for whom we introduce, and following our custom we are giving you a brief outline of his general background, his business activities and work in hybridizing.

Many A. I. S. members have visited the beautiful and restful garden of Mr. and Mrs. Stedman Buttrick of Concord, Mass. and have enjoyed the careful planning and arrangement of the garden as well as the beauty of the whole estate. Mr. Buttrick is a member of a very old Massachusetts family and his garden overlooks the famous battle ground where the American colonists turned back the British at the battle of Concord and Lexington. His property long known as the Buttrick Farm has been in his family since before the American Revolution. Mr. Buttrick is a member of one of the oldest banking firms in Boston which has many affiliations in the business world. In the horticultural field, he is treasurer of the Massachusetts Horticultural Society as well as a director of that society, but in his leisure hours his real joy is in his family, home, and garden with special interest in breeding better iris particularly in blues and whites. Most modest and conservative, he is a severe critic of his seedlings, but in his beautiful blue iris named *Seafarer* he agrees with many other A. I. S. judges that it is worthy of introduction. It is most deserving of the Highly Commended award given it in 1948.

As in previous years, we are introducing several iris from other prominent hybridizers. These are distinctive both in color and garden value. They have been tested for hardiness, and are varieties that we are pleased to introduce.

The late Mrs. Walter E. Tobie of Portland, Me. has produced many fine iris, but none is more lovely than *Aucocisco*, a beautifully finished amoena with almost pure white standards and very velvety dark blue-purple falls. It won the warm approval of the A. I. S. judges and received the award of Highly Commended in 1947.

The iris enthusiasts of Massachusetts are pleased to have this beautiful light blue iris bear the name of Bay State. Bred by Mrs. Preston E. Corey of Reading, Mass. this iris has been admired from coast to coast as demonstrated by the award of Highly Commended received in 1946.

Mrs. Henry L. Grant of Louisville, Ky. should feel very proud of her iris *Polonade* which we are introducing this year. A most unusual and handsome rich yellow and white

reverse bicolor that has attracted a great deal of attention and in 1948 won the Highly Commended award.

This year we are introducing for Mr. Harold W. Knowlton of Auburndale, Mass. the iris *Blizzard*, it is a fine early white of ruffled form that was one of the "high spots" of the 1946 A. I. S. annual meeting when it received the award of Highly Commended.

We have chosen two distinctive iris from Mr. H. F. Hall of Moorestown, N. J. a noted eastern horticulturist who is breeding some very fine iris. They are *Indian Red* a brilliant Pompeian red and copper, and *White Parchment* a tall and stately heavy substantced late white.

For Mr. Wentworth Caldwell of Nashville, Tenn. we are introducing the iris *Summertime*. Many will remember this handsome tall deep yellow that received the Highly Commended award in 1946.

From Dr. Robert J. Graves of Concord, N. H. we are presenting two most attractive iris; *Corporal Mary* a tall very large pale yellow with an infusion of white on the falls, this was given the award of Highly Commended in 1948. *Junior Miss* is a flaring ruffled cream that is delightful for border planting.

*On Guard* is a warm buff yellow from the hand of Mr. Carl Carpenter of Owensboro, Ky. It was on display last year in several gardens and received much favorable comment as well as the award of Highly Commended.

From Mr. Clarence Connell of Nashville, Tenn. the originator of the Dykes Medal iris *Dauntless* we have selected *Plum Tart*, a rich purple and white that is fascinating and unique in color placement.

Mr. Jesse E. Wills of Nashville, Tenn. who produced *Chivalry* the Dykes medal winner, says that he numbers many seedlings for further observation, but all that know him realize that he is most careful in the final selection. The two we are presenting this year are *Star Shine* a blend of cream, white and blue that is distinctly different from any other iris and winner of a Highly Commended award in 1948. *Far Hills* is a finely formed orchid pink with long season of bloom.

All that have seen the iris seedling patch of Mr. Geddes Douglas of Nashville, Tenn. realize what a wealth of good material he has from which to choose, and this year we are introducing several that cover the blooming season of the bearded iris. Two that are very early are *Dutch Boy* a lovely blue white, and *Lela Dixon* a clean sturdy blue and white plicata. The midseason to late varieties are *Cover Girl* a bright pink, and *Sarah Goodloe* a rich dark red that received the Highly Commended award in 1948. The very late season is represented by *Gaylord* a stunning amoena, and *Silver Sunlight* as sparkling as spring sunshine. Not only is Mr. Douglas a hybridizer of iris, but in the last few years he has been breeding some very fine hemerocallis, and this year we are introducing four of them; *Black Magic* a very dark purple, *Pink Radiance* a clear geranium pink, *Rose Unique* a tall watermelon red, and *Royal Guest* a beautiful rose purple.

This year we are introducing one of my own iris. *Beau Gay* is a delightful salmon orange self, deliciously fragrant and charming for border planting.

Our *Hemerocallis* Introductions for 1949 follow the *Iris* Introductions in the catalogue. They have been selected with great care, and represent a wide choice of colors.

Many of my hemerocallis introductions are included in a set of Kodachrome slides available for rent from Dr. Philip G. Korliss, Somerton, Arizona. If you are interested write him direct for details.

You are cordially invited to visit the garden at any time that suits your convenience. If you are unable to do so, and feel you need advice about varieties to choose, write me and I shall use the same care as if I were selecting for my own garden.

Lowell is about 26 miles from Boston. Coming from Boston to Lowell on Route 38, at the Oakland Fire Station (near the outskirts of the city) turn off on to Fairmount Street and at the top of the hill you will find Fairmount Gardens. Anyone coming to Lowell on other routes should ask for Nesmith Street on which you will find Route 38, and then follow above directions.

There are express trains from Boston to Lowell with taxi service from the station to FAIRMOUNT GARDENS.

Our Exhibition Garden is located at 166 Fairmount Street, Lowell, Mass. and our telephone number is Lowell 2-5121 listed under the name of Thomas Nesmith.

## *Please Read Before Ordering*

**ORDER EARLY** to avoid possibility of certain varieties being sold out. We make no substitution of varieties, unless second choice is given, and if stock is sold out, refund will be made.

**TERMS** are Cash with Order, Check, Draft, or Money Order. We allow 10% discount on each order over \$30.00. This discount does not apply to collections which are strictly NET.

**POSTAGE** is paid on all Retail Orders in the U. S. A. that amount to \$3.00 or over. On smaller orders add 25 cents for packing and postage.

We guarantee good healthy stock, true to name, and that it reaches you in good condition, but we cannot guarantee the growth in your garden. If plants do not arrive in good condition return them to us at once, and restitution will be made either by supplying stock or cash refund whichever we deem best. Any error on our part will be carefully corrected for our success depends upon your satisfaction.

We reserve the right to accept or refuse an order or any part thereof, depending on quantity of stock and whether at shipping time it is in good condition to be sent.

**SHIPMENTS:** We commence filling Bearded Iris orders about July 15th, and from then on until early October. Beardless Iris, Oriental Poppies, Hostas, and Hemerocallis are best shipped in late summer and autumn. We do not make shipments in the spring.

### DEFINITIONS OF INITIALS USED IN CATALOGUE

E.—Early.	R.—Rating.
L.—Late.	Per. R.—Permanent Rating.
M.—Midseason.	S.—Standards.
V. L.—Very Late.	F.—Falls.
H. C., A. I. S. is Highly Commended by American Iris Society.	
H. M., A. I. S. is Honorable Mention, American Iris Society.	
A. M., A. I. S. is Award of Merit, American Iris Society.	
A. M., R. H. S. is Award of Merit, Royal Horticultural Society.	

### NEW BOOK ON IRISES

During 1947 the AMERICAN IRIS SOCIETY published a book on IRISES, a consensus of opinions and experiences of members since the formation of the Society.

Among the contributors, there are John C. Wister, Richardson Wright, and J. Marion Shull, each an eminent authority on iris. Also, it contains a compilation on reports of culture, varieties and species that will do well in various parts of the country, and many other instructive features.

Well bound and illustrated, it is a most useful book for the casual gardener as well as the iris enthusiast. Prices

of the book: Permanent Binding \$2.50. Paper Binding \$1.50. Books and membership may be obtained through us or the AMERICAN IRIS SOCIETY.

### JOIN THE AMERICAN IRIS SOCIETY

Four bulletins are issued each year, which are filled with valuable information. Yearly membership fee \$3.50.

For each membership fee of \$3.50 and order of iris amounting to \$3.00 we will send an additional iris value of \$1.00, our choice. Checks for membership and book made out payable to, THE AMERICAN IRIS SOCIETY.

# FAIRMOUNT GARDENS

MRS. THOMAS NESMITH

166 FAIRMOUNT STREET, LOWELL, MASS.

TELEPHONE LOWELL 2-5121

## INDEX

FOREWORD .....	Page 1
IRIS	
Introductions for 1949 .....	Pages 3-4
A Selected List of Bearded Iris .....	Pages 7-19
One Hundred Best Iris for 1949 .....	Page 20
Special List of Well Known Bearded Iris .....	Page 21
Siberian Iris .....	Page 22
Louisiana and Washington Hybrids .....	Page 23
Evansia and Vernal Iris .....	Page 24
Spuria Iris .....	Page 24

HEMEROCALLIS	
Introductions for 1949 .....	Page 5
Hemerocallis .....	Pages 25-29
Older Hemerocallis, Especially Priced .....	Page 30
Well Known Hemerocallis .....	Page 28
HOSTAS .....	Page 32
ORIENTAL POPPIES .....	Page 31
COLLECTIONS .....	Pages 21-30

## Introductions for 1949

The following Iris and Hemerocallis are introduced by Fairmount Gardens

### BEARDED IRIS

**AUCOCISCO** (Tobie 1949) M. For those that are fond of perfectly finished medium sized flowers rather than huge ones, there is none more lovely than this iris with palest wistaria blue standards and very velvety blue-purple falls. The name is an old Indian name (pronounced Au-co-cis-co) and was first mentioned by Captain John Smith who sailed along the coast of Maine six years before the coming of the Pilgrims, and refers to the bay and surrounding country on which the city of Portland and Cape Elizabeth are located, the latter being where the beautiful garden of the late Mrs. Walter E. Tobie is situated. Almost a true Amoena, the blue-white standards are highly domed and firm, the semi-flaring falls are rich and dark with the velvety finish completely covering the surface. A gem in form, finish and color harmony, it is most deserving of the award of Highly Commended that was given it in 1947. H. C., A. I. S. 1947. 34 in. **\$15.00**

**BAY STATE** (Corey 1949) M. L. Most worthy of note is this light blue iris with large flowers of firm substance and delightful fragrance, often having three blooms open at one time on a tall well branched stalk. The standards are nicely domed and well held, the falls semi-flaring. It is a self of better form and clearer color than Great Lakes one of its parents, the color extends well into the haft with no lightening of tone or veining around the pale yellow beard tipped white. The flowers have a glistening finish that sparkles in the sunlight. Given the award of Highly Commended in 1946, it has performed well in the East as well as on the Pacific Coast. Five branches with ten flowers. H. C., A. I. S. 1946. 38 in. **\$20.00**

**BEAU GAY** (Nesmith 1949) M. The charm of this light salmon orange self is in its ruffled form, very firm substance and delicacy of color. A descendant of Leilani it has lost the heavy venation, but retained the lovely salmon orange color. An absolute self, even to the salmon beard, the flowers are medium in size with domed standards and semi-flaring falls. Deliciously fragrant and very floriferous, the strong stalks are well branched and show the blooms to good advantage. Lovely for border planting. 32 in. **\$10.00**

**BLIZZARD** (Knowlton 1949) E. Many will remember this beautiful white iris that was blooming in the Knowlton garden at the time of the National A. I. S. meeting held at Boston in 1946. It was the point of gravitation for the visitors, and that year received the award of Highly Commended. A large white that is as pure in color as freshly fallen snow. The flowers are firm textured with well domed standards and arched flaring falls. The whole flower is frilled and ruffled, and the bright yellow beard is in sharp, but pleasing contrast to the purity of the bloom. Few iris have the poise, beauty, and floriferousness of this early white. Ten or more blooms, often with three flowers open at one time, and evenly spaced on the very tall well branched stalk. Hardy and a good grower, it is a welcome addition to the class of early flowering tall bearded iris. H. C., A. I. S. 1946. 40 in. **\$12.00**

**COVER GIRL** (G. Douglas 1949) L. Names often suggest the attractiveness of an iris, and it is especially true of this neat pink blend. The dominant color is bright pure pink with a blending of deep buff and yellow on the upper part of the wide hafted falls. The standards and falls are trimly ruffled and the whole flower has a brightness and sheen that is very attractive. Late blooming, with firm substantiated flowers and good branching, this variety is delightful for front of the border planting. 30 in. **\$10.00**

**CORPORAL MARY** (Graves 1949) M. This iris was named for Mr. Edward Watkins' daughter who was in the WACS and served in the South Pacific, and was chosen by him as being an iris of special merit. A sister seedling of "Lady Louise" it is larger flowered and lighter in color, and has that indefinable something known as quality that we find in so many of the iris from Dr. Graves. Large firm flowers with pale lemon cream standards roundly domed, and broad flaring falls of white with a delicate tracery of cream at the edges. Full yellow beard. The firm textured blooms are well spaced on tall widely branched stalks. An iris of distinction and well worthy of the award of Highly Commended that it received in 1948. H. C., A. I. S. 1948. 42 in. **\$15.00**

**DUTCH BOY** (G. Douglas 1949) V. E. Here we have a very early blue-white that is thoroughly hardy and a dependable bloomer, a feature that is lacking in most of the early whites; so often they commence too early growth and lose their bloom buds, and are subject to rot from this injury. We have tested Dutch Boy for five years, both in the North and the South, and it has always bloomed profusely. The flowers are blue-white changing to cool white under hot sun, but always remaining crisp and firm. The standards are erect and touching, the falls arched and flaring. Tall, it has almost perfect branching (four branches and terminal), and the full yellow beard is an added attraction. A worthy iris to commence the pageant of tall bearded iris. 38 in. **\$10.00**

**FAR HILLS** (J. Wills 1949) M. Cool and refreshing is this large orchid pink self. Deeper in color than Dreamcastle, it is larger and has no haft venations to mar the smooth firm finish. The flowers have broad domed standards and full, slightly ruffled falls. The many flowers are well spaced on sturdy stalks with good branching thus giving a long season of bloom. A self with firm textured and smoothly finished blooms. The plants increase rapidly. Many orchid pinks have a harsh tone and are difficult to place, but Far Hills combines well with other iris as well as having great carrying qualities in the garden. 38 in. **\$10.00**

**GAYLORD** (G. Douglas 1949) V. L. The A. I. S. members that stayed a day or two after the Nashville meeting were treated to a great show in this very late blooming Amoena, and I quote from the description of it by Mr. E. G. Lapham in the July A. I. S. bulletin; "But at the last it was a great terrific Amoena (635D) that made a last minute entrance to steal the show. A very large affair that seems to have everything, shape and substance, stalk and vigorous growth. The standards are white, the falls have a reddish violet tinge to the deep blue with but a hairline of white edging, beautifully ruffled and flared to perfection". Wide hafts and thick orange beard. A very free bloomer with three branched stalk. This iris should be the break for a new line of Amoenas. Although the stock is limited, it is so outstanding in comparison with other introduced Amoenas that I feel it should be introduced this year. Only 15 rhizomes will be sold this year, and only one to a customer. 40 in. **Net \$20.00**

**INDIAN RED** (H. F. Hall 1949) M. Colorful and with great garden value, this tawny tan and bright Pompeian red always attracts the attention of garden visitors. The very broad and full standards are a blending of pecan brown and Pompeian red giving a coppery rose effect. The large extremely flaring falls are bright Pompeian red bordered with a decided ruffle of light pecan brown. Rich gold beard. Few iris have the brilliance of this boldly flaring red iris. The flowers have heavy substance, and the stalks are very sturdy and well branched. 36 in. **\$15.00**

**JUNIOR MISS** (Graves 1949) M. There is a growing demand for border iris, and Junior Miss is especially adapted to foreground planting. Few of this type of iris have the charm and refinement of this creamy yellow self. Firm substanced slightly ruffled flowers with no venations to detract from the smooth almost satiny finish. The stalks are adequately branched to display the many blooms to good advantage. Very free flowering and of rapid increase. Delightful planted in front of taller blues and purples. 24 in. **\$5.00**

**LELA DIXON** (G. Douglas 1949) E. We need blue plicatas that have a clear color pattern, good branching, and sturdy stalks that will not blow down at the slightest provocation, and this iris meets these requirements. A seedling of Blue Shimmer, it has lost the flexible stalk, but kept the color. In fact, the blue is more clear, and the white more pure, giving a clear cut contrast that is most pleasing. The well shaped flowers are of rather rounded form and have smooth firm texture. The stalks have excellent branching. It is hardy and a good grower. Early flowering, it blooms about the same time as Dutch Boy, thus adding another to this class of early tall bearded iris. 36 in. **\$15.00**

**ON GUARD** (C. Carpenter 1949) M. L. On Guard is well named for it is tall, sturdy and as well groomed as a soldier at attention. Large full flowers of warm yellow softened to a lighter tone in the center of the falls and a slight infusion of old gold at the haft around the full yellow beard. The firm standards are cupped and closed, the broad falls are semi-flaring and lightly ruffled at the edge. The whole flower has a delightful picotéd border that adds to its individuality and charm. The fine formation of the smooth heavy substanced flowers and the strong sturdy stalks combine to give a very outstanding yellow that does not fade or burn. A good grower, it has been tested in many parts of the country and is very deserving of the award of Highly Commended that it received in 1948. H. C., A. I. S. 1948. 40 in. **\$15.00**

**PLUM TART** (C. Connell 1949) M. Christened by Mr. Robert E. Allen and most aptly so for the color is like a delectable plum tart with a dash of white meringue in the center. Many will remember this unique and fascinating iris that was blooming in the Douglas garden as well as here in 1948. A dark Perilla purple self except for the center of the falls which is white and on the upper part, this white seems painted on the surface in brush strokes rather than blended into the purple. The standards are conic and domed, the falls semi-flaring, the beard bronzy purple. A long flower with smooth texture well carried on three way branching stalks. Mr. Connell and I have watched this iris for several years and have always been drawn to it for the whole flower has an exotic touch that reminds one of Onco hybrids in its unusual yet attractive arrangement of color and the rather short foliage. 34 in. **\$7.50**

**POLONADE** (Grant 1949) M. L. Exquisitely finished and of almost perfect form, this lovely yellow and white reverse bicolor was greatly admired in the Douglas garden and in our own, and received the award of Highly Commended in 1948. This award was erroneously listed in the A. I. S. 1948 awards as Polonaise. The standards are rich medium yellow and are firmly and roundly domed. The falls are semi-flaring of smooth even white, and over the whole flower is the chamois like lustre of magnolia blossoms, a quite different arrangement of color that is most effective. Tall with ideal branching, often with three flowers open at one time with no crowding, it creates a picture that is not soon forgotten. H. C., A. I. S. 1948. 39 in. **\$20.00**

**SARAH GOODLOE** (G. Douglas 1949) M. L. Rarely do we see an iris that has such rich elegance as this tall and stately one. This is due to the solid almost black-maroon color and the very velvety finish of the flowers. An iris that was highly praised at the Nashville meeting and received the award of Highly Commended in 1948. A long flower with arched and highly domed standards of deep maroon. The falls are semi-flaring of the same color as the standards, but with a deep velvet flush that extends into the heart of

the bloom. Most reds do not stand strong sun or rain, but this does remaining crisp and fresh throughout the day. The stalk is tall, strong and especially well branched for a red (four branches and terminal). A very finished iris with excellent carrying quality in the garden. H. C., A. I. S. 1948. 38 in. **\$20.00**

**SEAFARER** (Buttrick 1949) M. L. The name suggests the clear blue water of the sea and is most appropriate. All that have seen this iris praise it highly and are impressed not only by the clarity of blue color, but by the perfection of form and sturdy growth. It is a true self, smooth and free from self veining that so often mars the beauty of an iris. The color is clean and pure and more blue than any of the newer blue iris of similar color depth. The standards are firmly domed with no tendency to open at any time. The falls are flaring and in excellent proportion so that the flowers structurally present a most pleasing appearance. Clear medium blue self except for the white beard lightly tipped blue, an attractive touch against the blueness of the falls. Smooth firm substanced flowers, fine low branching, clean strong foliage. The center of attention in the Buttrick garden, it well deserves the Highly Commended award given by the A. I. S. judges in 1948. H. C., A. I. S. 1948. 36 in. **\$20.00**

**SILVER SUNLIGHT** (G. Douglas 1949) V. L. A perfect name for this lovely and unusual iris. Fascinating in combination of color with the large domed standards of clear golden yellow on the outside and white on the inside. The flaring falls are white on the upper surface and yellow on the underside. Clean in color, there is a silvery lustre enveloping the whole flower that sparkles and glistens in the sunlight. Firm textured flowers and excellent branching (three branches and terminal). It is charming as a cut flower as well as in the garden. A great addition to the late blooming class of iris. 36 in. **\$15.00**

**STAR SHINE** (J. Wills 1949) M. L. Deep cream, white, and pearly blue are so skillfully combined that the flower has the iridescent gleam of lustrous pearls. An iris of great individuality, it was a center of attraction in the Wills garden at the time of the Nashville meeting and received the Highly Commended award in 1948. The deep cream or buff-yellow standards are broad and domed, the white flaring falls have a suggestion of blue in the center, and an edging of the same color as the standards. Very firm substanced flowers and exceptionally sturdy well branched stalks. An iris that never succumbs to the elements; always it remains firm and strong whether in rain, wind or strong sun. It has great distinction both in quality of flower and arrangement of color. Good branching and long season of bloom. H. C., A. I. S. 1948. 36 in. **\$15.00**

**SUMMERTIME** (W. Caldwell 1949) M. L. Rich, deep yellow of very flaring rounded form and almost perfect branching. Many will remember this iris in the Caldwell garden in 1946 when it bloomed for the first time. The judges praised it highly and that year it received the award of Highly Commended. It has proven thoroughly dependable and most outstanding in the deep yellow class. The standards are Capucine yellow (Ridgway), broad and perfectly domed. The very flaring falls are just a shade lighter with a slight creamy flush around the thick yellow beard, and this tends to accentuate the richness and depth of color. Firm heavy substanced flowers and strong sturdy stalks. This iris is in the front ranks of the darker yellows. 4 branches, 10 blooms. H. C., A. I. S. 1946. 40 in. **\$15.00**

**WHITE PARCHMENT** (H. F. Hall 1949) M. L. This iris is well named for it has the strong substance and impervious quality of heavy parchment. Many white iris are early flowering, but this very large clear white blooms later, thus extending the season of white iris in the garden. The standards are firm and closed, the falls arched and flaring with just a faint flush of yellow around the very pale yellow beard. Tall and sturdy, often with three or more flowers open at one time on the widely branched stalk. Few iris have the strength of stalk, vigor, healthy clean foliage and rapid increase of this commanding iris. 40 in. **\$15.00**



## HEMEROCALLIS INTRODUCTIONS

Colors are taken from Maerz & Paul Dictionary of Color

**AMBER LUSTRE** 45-84 (Nesmith 1949) Hemerocallis lovers have come to realize that they need soft blended colors to intersperse among the deeper tones, and Amber Lustre is excellent for this purpose. The background of the large full flowers is apricot yellow with a pigmentation of light pinky orange on both sepals and petals. Heavy substanced flowers, strong sturdy stalks with excellent branching. July-Aug.. 47 in. **\$8.00**

**BLACK MAGIC** (Douglas 1949) Black purple hemerocallis that do not fade are rare, but this one holds its color throughout the day. A full rounded self except for the pale chartreuse cup, and this brings out in pleasing contrast the deep dark color of the bloom. The flowers are cup shaped and an established clump will have nearly forty flowers on tall well branched stalks. July-Aug. **\$12.00**

**BONNY RUFFLES** 48-14 (Nesmith 1949) A cup shaped flower of Chalcedony yellow with slightly recurving petals and sepals. The flower is a self even to the center of the cup. Both petals and sepals are fluted giving a very ruffled effect. It is an evening bloomer, opening about five o'clock in the afternoon, keeping in perfect condition through the next day. Very free flowering. 40 in. **\$7.00**

**CANYON PURPLE** 45-50 (Nesmith 1949) A distinctive new break in color. Large full open flowers of raspberry purple with a deeper flush just above the pale lemon cup. Both petals and sepals are lightly ruffled at the tips. A self, even the stamens and pistil are purple. Strong stalks and fine branching. July-Aug. 45 in. **\$9.00**

**DANCING FIRE** 47-67 (Nesmith 1949) Medium sized flowers of great brilliance and garden value. The undercolor is flash red with a deeper red flush extending over the petals. Crisp fluting on edges of sepals and petals. Cup of flower is rich chrome yellow. Good branching. July-Aug. 35. in. **\$9.00**

**GAY HEART** 45-19 (Nesmith 1939) Bright and gay as the name implies. The outer portion of the petals and sepals is Hollyberry red blending into Apricot yellow at the center. The petals have a broad midrib of the same yellow extending into the six pointed star of the yellow cup. Both petals and sepals have a decided ruffle on the edges. A bold showy flower. July-Aug. 36 in. **\$10.00**

**GUIDING LIGHT** 43-91 (Nesmith 1949) Lovely frosted very pale melon with the petals and sepals fluted on the border. The flower is a self even to the heart of the flower. The flowers are medium in size and beautifully finished. Delightful for front of border planting. July-Aug. 36 in. **\$7.00**

**KENTUCKY CARDINAL** 46-113 (Nesmith 1949) A rich Cardinal red flower with very velvety finish on the petals, the sepals are smoothly finished with just a touch of yellow at the tips. Open flaring blooms of great brilliance. When established, it blooms the second time, thus giving a long flowering season. Aug.-Sept. 40 in. **\$9.00**

**PIMENTO** 43-126 (Nesmith 1949) Bright and gleaming, this variety is stunning as a cut flower or for border planting. A star shaped flower of intense red; of open spreading form the petals are fluted and the rich orange cup seems to illumine the whole flower. July-Aug. 38 in. **\$10.00**

**PINK LOTUS** 45-237 (Nesmith 1949) Large and very spreading flowers of light pink coral with the heart of the bloom shading out to pale creamy buff. A very open flower of attractive and unusual form. July-Aug. 35 in. **\$9.00**

**PINK PETTICOATS** 43-30 (Nesmith 1949) All frilled and ruffled, this self of pink coral bells coloring has very recurving petals and sepals. A full flower with a deeper rosy flush just above the Spanish yellow cup. Tall with rather high branching it is especially good for back of the border planting. Gives a very pink effect. August. 50 in. **\$9.00**

**PINK RADIANCE** (G. Douglas 1949) The name is most descriptive of this beautiful hemerocallis. It is a light geranium pink with a halo of a deeper tone of the same color just above the yellow throat. The blooms are broad and full with petals and sepals slightly fluted at the tips. Tall with good branching, it holds its color well under hot sun. A very lovely hemerocallis. July-Aug. **\$12.00**

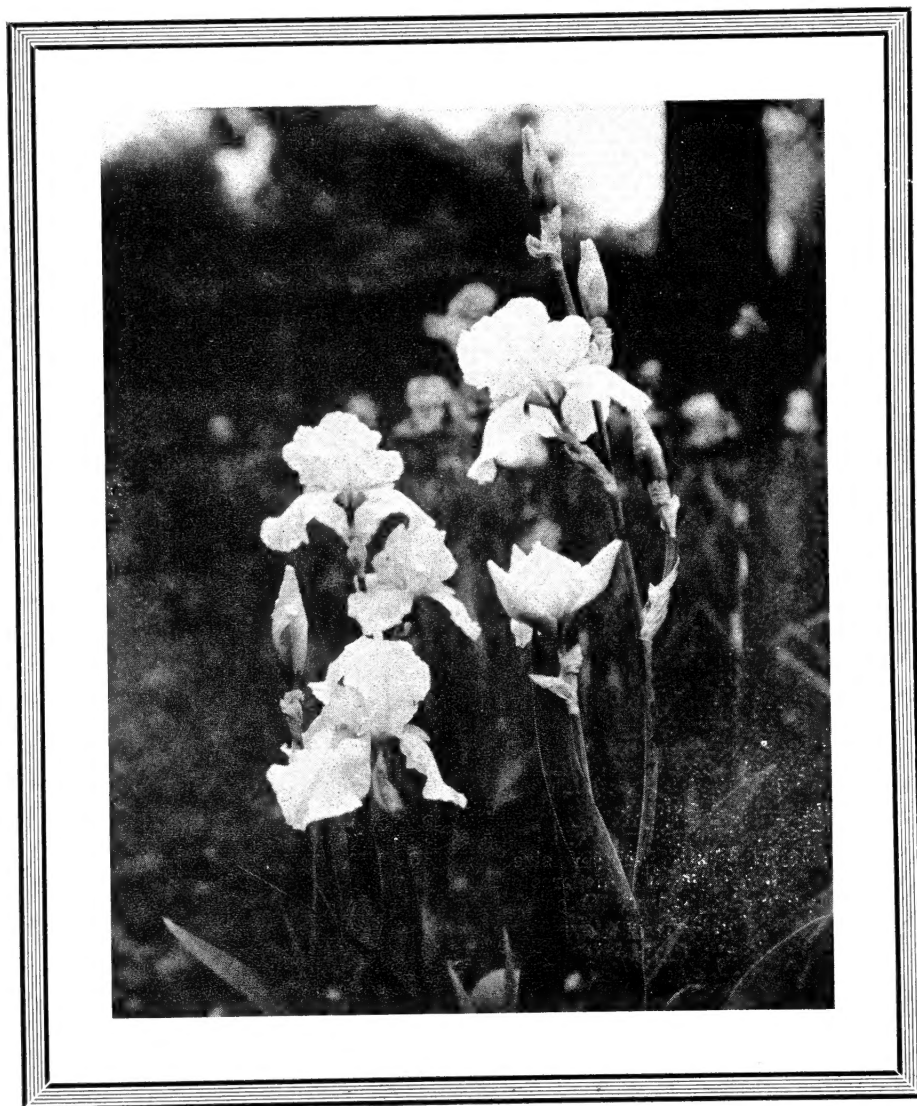
**ROSE UNIQUE** (G. Douglas 1949) Deep watermelon red flushed darker just above the greenish yellow throat and over the whole flower is a lustrous sheen. The petals and sepals are medium in width, but have heavy substance. Tall and floriferous it is very bright in the garden. July-Aug. 48 in. **\$8.00**

**ROYAL GUEST** (G. Douglas 1949) Mr. Douglas considers this one of his best hemerocallis. A beautiful rose purple with a cool green throat. Large well shaped blooms with an exquisite finish to the whole flower. The stalks are very well branched, and it increases rapidly both by proliferations and regular plant increase. July-Aug. 38 in. **\$12.00**

**TALLY-HO** 43-52 (Nesmith 1949) Bright and glowing as a huntsmans' coat, this vermilion red is very brilliant in the garden. The recurving flowers are medium in size with the edges of petals and sepals lightly fluted, and a deeper flush of red just above the cool yellow throat. July-Aug. 39 in. **\$10.00**

**TWILIGHT TRYST** 46-14 (Nesmith 1949) Those that like evening blooming hemerocallis will enjoy this light Forsythia yellow. A self except for a narrow line or halo of Morocco red on the petals, but not on the sepals giving a triangular effect at the heart of the bloom. Both petals and sepals have a delightful ruffling at the edges. Tall with very heavy substanced blooms opening about five P.M. and remaining in good conditions for twenty four hours or more. July-Aug. 46 in. **\$9.00**

**WOOD NYMPH** 47-16 (Nesmith 1949) There seems to be a great demand for low growing hemerocallis that are suitable for the rock garden or flower arrangement, and this one is most adaptable to such purposes. The medium sized lily-like blooms of deep old burgundy have a darker velvety flush on both sepals and petals, which extends far down into the throat of the flower. The color holds well in hot sun. Good branching. Aug. 30 in. **\$10.00**



**1949 Bearded Iris Introduction**

**BLIZZARD**

See Page Three for Description

## *A Selected List of Bearded Iris*

Excellent Older Irises Especially Priced Will Be Found on Page 19

In this list, all that are not especially noted as to classification are Tall Bearded Iris. The change of some varieties is in accordance with the new A. I. S. classification.

**ACTION FRONT** (P. Cook 1942) M. This coppery red iris is distinct and worthy. The conic domed standards are ochre red. The flaring falls are garnet brown. One of the best in this class. Per. R. 88 1945. 36 in. \$1.50

**ADMIRAL NIMITZ** (Graves 1948) M. An iris of quality and a gem in purity of color. Named for our American Admiral, it is as strong and dependable as this famous man. The flowers are large and very white, one might describe them as dead white, with a thick brilliant gold beard, suggesting a naval officer in white with his rich gold shoulder ornaments. The crisp firm flowers with closely domed standards, and semi-flaring falls are heavy substantiated withstanding wind and rain. The spacing of the blooms on the well branched stalk is excellent. Healthy, hardy growth. This iris is a great addition to the series of whites produced by Dr. Graves. H. M., A. I. S. 1948. 42 in. \$12.50

**ALPINE GLOW** (Kleinsorge 1945) L. The large well formed flowers have a subdued rose tone that suggests the soft colors of mountain valleys at sundown. The colors are well blended and it is a bright iris that carries well in the garden. The blooms give the effect of a self. Tall and well branched. H. M., A. I. S. 1946. R. 89 1946. 38 in. \$3.00

**AMANDINE** (G. Douglas 1946) M. L. The charm of this lovely iris is in its delicacy of color and delightfully ruffled form. It is a self with large flowers of pale cream with just a flush of lemon. When first you see this iris you think "what beautiful blooms but they look so fragile". The surprising thing is that the flowers have exceptionally firm substance and keep in perfect condition for three days under very hot sun. The standards are broad and perfectly domed, the falls full and flaring. A symmetrical flower of exquisite beauty. Sturdy growth and good branching. H. C., A. I. S. 1945. H. M., A. I. S., 1946. A. M., A. I. S., 1948. Winner of the President's Cup at Nashville in 1948. R. 90 1946. 36 in. \$8.50

**AMIGO** (Williamson 1934) E. M. A gem with its blooms suggesting purple pansies on account of the sharp contrast between the lavender standards and velvety purple falls. H. M., A. I. S. 1936. A. M., A. I. S. 1938. Per. R. 90, 1936. Classed as a Border Iris. 30 in. \$ .75

**AND THOU** (Graves 1942) M. A self of palest Wedgwood blue (Ridgway) with a deeper blue flush in the center of the bloom. The large flowers are rounded in form, of heavy substance. Beard blue tipped white. Strong sturdy stalks with good branching. H. C., A. I. S. 1941. H. M., A. I. S. 1942. Per. R. 88 1942. 40 in. \$1.50

**ANNABEL** (Whiting 1942) M. A very clear light blue self, it is the pod parent of the lovely Blue Rhythm. R. 87 1943. 36 in. \$1.00

**ANNA WILLIAMSON** (Cook 1946) E. M. A blended pink bicolor with good carrying qualities in the garden. The contrast of light pink standards and deeper pink falls is very pleasing. H. M., A. I. S. 1946. 36 in. \$5.00

**ANNE NEWHARD** (Weisner 1940) M. L. Clear satiny blue purple bicolor, very smooth finish with no venations. One of the best. H. M., A. I. S. 1944. R. 88 1943. 38 in. \$1.00

**ARCATA** (Essig 1947) M. The name is Miyot-Indian for Sunny Spot, and it is most descriptive of this delightful iris, for growing in a clump, it gives the effect of sparkling golden sunshine. A Primrose yellow self, flushed a little deeper toward the center of the flower. Large, well formed blooms with arched and firmly held standards, and broad, flaring falls, slightly fluted at the edges. Wide branching, and vigorous growth. 40 in. \$7.50

**AUTUMN TWILIGHT** (Brown 1948) L. A fall blooming iris that is dependable in flowering even in New England, where most of these do not perform well on account of our shorter season. The closed standards are ecru in color, with no veining, and have a sparkling finish. The semi-drooping falls are lavender in the center, bordered with a brown edging. Hafts ecru with lavender reticulations. Blooms in August, September, and October. Floriferous and increases rapidly. Well branched with nine buds. 32 in. \$4.50

**AZALEA** (Nesmith 1946) M. This pink is tall and has good branching, which many of the newer pinks lack. The color is azalea pink with just a flush of ivory enveloping the whole flower. The standards are domed and firmly held, the falls semi-flaring in pleasing proportion to the rest of the flower. Soft pink beard. Floriferous, and increases rapidly. Stock has been increased enough so that we can again list it in the catalogue. H. C., A. I. S. 1944. R. 87 1946. 38 in. \$7.00

**AZURE SKIES** (Pattison 1943) M. L. A self of pale lavender blue with firm domed standards and flaring almost horizontal falls. The ruffled flowers are beautifully formed with wide hafts, while the white beard accentuates the clarity of the bloom. The flowers have crisp strong substance. Wide and low branching. H. M., A. I. S. 1943. A. M., A. I. S. 1945. Per. R. 89 1944. 34 in. \$2.00

**BARBARA ADAMS** (Cahoon 1947) E. M. A deep Blue-purple self with very flaring falls, and strong well domed standards. The flowers are medium in size, and are most perfectly formed, and the blue beard tipped white surrounded by a lighter area, brings out the clarity of color in these smooth satiny finished blooms. A very floriferous variety with strong firm substantiated flowers on four or five way branching stalks. 34 in. \$5.00

**BARBARA LUDDY** (Lapham 1947) M. Named for the well known stage and radio artist Barbara Luddy, the iris is a fitting tribute to this talented and beautiful girl. According to Ridgway, the color is light Safrano pink, and it has just a flush of ivory near the haft and around the very broad tangerine beard. A self with rounded flowers of full form and firm substance with no venations to detract from the purity of color. A truly lovely pink of great refinement of form, and it has enough strength of color to have excellent garden value. A cross of Spindrift X Melitza, it is a very strong grower, and the flowers hold up under most adverse weather conditions. Even placement of the flowers on a strong, three way branching stalk. H. C., A. I. S. 1946. H. M., A. I. S. 1947. 38 in. \$10.00

**BERKELEY GOLD** (Salbach 1942) M. L. Deep clear yellow self of especially fine form, heavy substance and smooth finish. The flowers are large, the stalks well branched and the blooming season is long. A thoroughly worthy iris with great intensity and purity of color. H. M., A. I. S. 1944. A. M., A. I. S. 1946. Per. R. 89 1946. 38 in. \$1.50

**BILLET DOUX** (G. Douglas 1946) E. M. This winsome little iris has a most intriguing form. Most aptly, it has been described as a "miniature Great Lakes with carriage correct, and poise erect." The standards are cupped and not touching, the falls very flaring and turned up at the border. A soft blue self with a firm porcelain-like finish, the many dainty flowers are evenly spaced on four to five way branching stalks. Classed as a Border Iris. 22 in. \$3.00

**BLACK BANNER** (Nicholls 1947) L. Deep and velvety, this very dark iris is blue purple in color, and as with many of Col. Nicholls' iris, it is almost void of haft markings. Late flowering with sturdy growth, and good branching, it is a great addition to this color class. H. M., A. I. S. 1947. 39 in. \$4.00

**BLACK FOREST** (Schreiner 1945) M. A very deep richly colored iris of silky ebon blue-black. The blue beard and solid haft add to the depth of color. The well substanced flowers are medium in size and well proportioned to the height of the stalk. H. M., A. I. S. 1946. A. M., A. I. S. 1948. R. 89 1946. Classed as a Border Iris. 24 in. \$6.00

**BLUE CROWN** (Washington 1945) M. Lovely blue and white reverse bicolor with a frosty sheen enveloping the whole flower. The pale blue standards are roundly domed, strong and firm. The semi-flaring falls are pure white with slight ruffling at the edge. The delicate contrast of standards and falls is most effective. Heavy substanced flowers, good branching. A fragrant iris. 36 in. \$3.50

**BLUE FRILLS** (B. N. Stephenson 1946) M. An azure blue that is deeper in color than many of the blue iris of the present day. Roundly formed flowers of heavy substance and smooth glossy texture. The beard is harmoniously tinged blue and combines beautifully with the clarity of color that so characterizes this iris. 39 in. \$5.00

**BLUE GLOW** (Nicholls 1948) L. Lighter in color than Black Banner this iris has good carrying qualities in the garden. Almost a self, save for the lighter tone of violet in the standards. Smoothly finished flowers and well branched stalks. H. M., A. I. S. 1948. 38 in. \$5.00

**BLUE RHYTHM** (Whiting 1945) M. L. In color it is not far from Cornflower blue, softened by a silvery sheen. The flowers are large and full with broad standards, and wide semi-flaring falls. There are no haft markings to detract from the blueness of the bloom. Good substance, free blooming habit, and tall widely branched stalks. H. M., A. I. S. 1945. A. M., A. I. S. 1947. R. 90 1946. 39 in. \$7.50

**BLUE SHIMMER** (J. Sass 1942) M. A large blue and white plicata that stands out in the garden. The wide standards and falls are patterned with blue over a white background. Good branching. H. M., A. I. S. 1942. A. M., A. I. S. 1944. Per. R. 89 1943. 39 in. \$2.50

**BLUE VALLEY** (K. Smith 1947) M. L. Full, ruffled medium blue that gives a very blue effect in the garden. The standards are broad, domed, and fluted at the edges. The ruffled falls are very flaring with the color continuing in to the heart of the flower. Heavy substanced blooms well spaced on tall well branched stalks. H. C., A. I. S. 1945. H. M., A. I. S. 1947. 39 in. \$18.00

**BOLD VENTURE** (Nesmith 1948) L. Late blooming, this pale rose and rosolane purple is a distinct variation in color pattern, and very showy in the garden. The conic standards are clear pale rose purple, almost white. The semi-flaring falls are deep rosolane purple (Ridgway), slightly ruffled at the edges with deeper reticulations around the reddish gold beard. Heavy substanced flowers, 10 or more blooms on 4 way branching stalk. Vigorous foliage and long season of bloom. 40 in. \$10.00

**BRIGHT LIGHTS** (Schreiner 1946) M. A novel plicata that has the carrying quality of a waxy rich yellow. On closer inspection it appears to be a bitone with bright yellow standards and white falls, bordered with a stitching of brown. 38 in. \$5.00

**BRONZE BROCADE** (Nesmith 1948) M. L. The name is most descriptive of this lustrous warm blend of copper red, and tobacco brown. The standards are bronzy red, very broad and roundly domed with strong midrib. The semi-flaring and ruffled falls have a brown undercolor flushed Corinthian purple around the bronzy gold beard. There is a darker band of Kaiser brown bordering both standards and falls. Heavy substanced flowers. Strong vigorous growth with 10 or more blooms on 5 way branching stalk. Described by an iris judge as "a lovely copper blend with a dark copper band around the edges." H. M., A. I. S. 1948. Sold out until 1950. 40 in. \$20.00

**BROWN THRASHER** (Kirkland 1940) M. Deep, yet glowing, this iris is almost a true brown, enlivened by the beard and brilliant central area. The flower has a lustrous sheen that makes it seem alive. H. M., A. I. S. 1940. A. M., A. I. S. 1943. Per. R. 87 1941. 34 in. \$2.00

**BRYCE CANYON** (Kleinsorge 1944) M. Named for one of the most colorful canyons of the west, its warm shades of henna and copper closely resemble the mellow yet glowing colors of the rock formation in that region. The flowers are large with highly domed standards and rather rounded falls. Bronze yellow beard. Substance firm, height and branching good. H. M., A. I. S. 1945. A. M., A. I. S. 1947. Per. R. 89 1946. 36 in. \$6.00

**BURGUNDY ROSE** (D. Hall 1946) M. An iris that is well named for its dark amethyst color reminds one of the richness of old Burgundy wine. The large ruffled flowers are proudly carried on strong well branched stalks. Free blooming with vigorous growth. 35 in. \$5.00

**BURMESE GOLD** (Whiting 1945) M. Blended colors of deep yellow, pink, and gold, so smoothly combined that the whole effect is bittersweet pink. Especially nice in a clump for it has a long season of bloom, and its bright fresh flowers are long lasting. R. 90 1946. 36 in. \$5.00

**BUTTERCUP LANE** (D. Hall 1941) M. A clear brilliant yellow that is a great favorite. The standards are closed and heavily fluted as are the semi-flaring falls. A floriferous yellow with great value for border planting. H. M., A. I. S. 1940. Per. R. 88 1941. 31 in. \$ 75

**CAMPFIRE GLOW** (Whiting 1947) E. M. L. Described by the originator as a glowing ruby red, heavily infused with copper, giving the flower a metallic lustre. The flowers are wide petaled with firmly domed standards and rounded flaring falls. Firm substanced flowers, good branching. H. M., A. I. S. 1947. 36 in. \$20.00

**CAPTAIN WELLS** (P. Cook 1941) M. A deep glossy maroon purple with splendid habits of growth. A self, neat and finished in form with almost no haft markings. The whole flower has a shining surface that gives the rich color life and brilliance. H. M., A. I. S. 1942. A. M., A. I. S. 1943. Per. R. 89 1943. 38 in. \$1.50

**CARILLON** (J. Wills 1945) M. L. A warm blend with the luscious coloring of ripe apricots. The cupped standards are broad and thick textured. The falls are arched and flaring with very heavy substance. Not tall, but very floriferous, the sparkling flowers of pink and honey yellow form a charming clump for border planting. H. C., A. I. S. 1943. H. M., A. I. S. 1945. R. 87 1945. 33 in. \$5.00

**CAROLINE BURR** (K. Smith 1940) M. L. Light ivory self overlaid with palest Chartreuse. The standards are domed with a pronounced midrib. The falls are semi-flaring. Four branched stalks. H. C., A. I. S. 1939. H. M., A. I. S. 1940. A. M., A. I. S. 1942. Per. R. 89 1941. 40 in. \$1.50

**CAROUSEL** (G. Douglas 1948) M. This large, tall, flaring flower of heavy substance and smooth finish was given its name because it reminds one of the brilliant, dazzling colors of a carnival. The medley of magenta, violet, and gold is so skillfully combined that the color effect is bright lavender-rose. The heavy orange beard accentuates the boldness of pattern. This large flowered variety is especially valuable for the back of the border on account of its tall, strong stalks, and great freedom of bloom. H. M., A. I. S. 1948. 44 in. \$7.50

**CASA BLANCA** (Washington 1940) M. A beautiful white of large size and flaring form. The standards are broad and roundly domed. The wide flaring falls have very firm substance. The tall stalks with four branches carry 8 to 10 blooms of heavy smooth texture. 40 in. \$2.50

**CASA MORENA** (De Forest 1943) M. One of the largest flowered iris that I have seen. A self with long full blooms of Chestnut brown which in sunlight glisten with reddish tones. An entirely new color in the garden. H. M., A. I. S. 1944. A. M., A. I. S. 1946. Per. R. 88 1946. 36 in. \$4.00

**CASCADE SPLENDOR** (Kleinsorge 1945) L. Most attractive in color and form, this large flowered blend of pink, apricot, and tan, has won high praise from iris judges. The very large well substanced flowers are broad and full with decided ruffling on both standards and falls. Sturdy stalks with good branching. H. M., A. I. S. 1945. A. M., A. I. S. 1947. R. 88 1946. 36 in. \$6.00

**CATHEDRAL DOME** (Nesmith 1936) M. A large white with ruffled well domed standards, the falls are arched and flaring. Yellow beard. Strong well branched stalks. H. M., A. I. S. 1936. Per. R. 90 1938. 39 in. \$1.00

**CHAMOIS** (Kleinsorge 1944) M. Pure chamois in color, this very large flowered variety has a soft satiny finish that sparkles as if dusted with frost crystals. The flowers are beautifully formed with standards and falls waved at the edges. A self with no venations. H. M., A. I. S. 1945. A. M., A. I. S. 1948. Per. R. 88 1946. 36 in. \$6.00

**CHANTILLY** (D. Hall 1945) This is a distinct novelty with lovely ruffled flowers of lavender flushed with gold at the haft. The edges of both standards and falls are so heavily crimped that they give the appearance of being edged with lace. Dainty and charming with good substance and well branched stalks. H. M., A. I. S. 1945. A. M., A. I. S. 1947. R. 88 1946. 36 in. \$5.00

**CHICORY BLUE** (G. Douglas 1942) M. A most appropriate name, the color being the same as Chicory blue in Ridgway. A large blue self with closely domed standards. The falls are broad and flaring. The flowers have firm substance and are borne on four way branching stalks. H. C., A. I. S. 1941. H. M., A. I. S. 1942. Per. R. 87 1943. 48 in. \$2.50

**CHINA MAID** (Milliken 1936) M. Blended flower of pink, golden bronze and soft lilac. H. M., A. I. S. 1938. A. M., A. I. S. 1939. Per. R. 88 1939. 40 in. \$ .75

**CHIVALRY** (J. Wills 1944) M. An impressive flower that is deeper in color than Great Lakes, larger in size, and with exceptionally heavy substance. The domed standards are large and full. The flaring falls are broad hafted, firm and strong. The inconspicuous beard is orange changing to blue at the tip. Both standards and falls are ruffled at the edge, and this adds greatly to the beauty of the flower. The placement of the blooms on the well branched stalk is excellent, and the growth is vigorous. A very fine real blue iris of great garden value. H. M., A. I. S. 1944. A. M., A. I. S. 1946. Winner of The Dykes Medal in 1947. Per. R. 90 1945. 36 in. \$10.00

**CHOIR BOY** (Schreiner 1947) L. The flowers have milk white standards that soon pale to clear white. The falls are deep blue without the usual purple tinge. Medium height with fair branching. 34 in. \$2.50

**CITY OF LINCOLN** (H. P. Sass 1937) M. A brilliant variegata. Standards are clear yellow, falls bright velvety red bordered with rim of yellow. H. M., A. I. S. 1938. A. M., A. I. S. 1939. Per. R. 90 1938. 42 in. \$ .50

**CLOUD CASTLE** (Graves 1944) M. An exquisite and effective pale wistaria blue. The standards are broad and roundly domed with a distinct fluting at the edge. The ruffled falls are wide and flaring. There is an indefinable charm about this iris that always attracts the attention of garden visitors. A self with evenly spaced flowers on well branched stalks. H. M., A. I. S. 1944. Per. R. 88 1946. 37 in. \$3.00

**CLOVELLY** (Tobie 1940) M. L. A very flaring white with a strong suffusion of sea-foam green (Ridgway) throughout the flower giving the effect of a pale green iris. The flowers have fine form and extremely heavy substance, four way branching stalks. R. 79 1942. 40 in. \$1.50

**COLOMA** (Essig 1946) E. M. This is an iris that will please those of most discriminating taste. A luminous pale yellow with cupped and firmly held standards slightly deeper than the flaring falls. There is a white area around the heavy orange beard and a distinct edging of the same color as the standards. Strong, sturdy stalks with wide branching. R. 88 1946. 44 in. \$3.50

**COLOR SERGEANT** (H. F. Hall 1948) M. L. This iris was bred by a well known eastern horticulturist, and under number R-79 has received much praise from iris judges and garden visitors. The broad and perfectly domed standards are a blending of malaga and antique ruby (Maerz & Paul). The flaring falls are antique ruby with deeper velvety flush, bordered by ruffled edges of lighter malaga. Beard deep brownish yellow. Handsome and outstanding in the ranks

of rich deep reds, the large flowers have strong firm substance, and do not wilt or fade under hot sun. 8 to 10 blooms on 4 way branching very sturdy stalk. Vigorous foliage and rapid increase. 40 in. \$15.00

**COMRADE** (C. P. Connell 1942) M. Strong and sturdy, this bright dusty rose has an under color of gold that suffuses through toward the center of the flower. A luminous iris with subtly blended color. Very firm substance, and wide branching. R. 87 1942. 38 in. \$1.00

**COPPER GLOW** (G. Douglas 1945) M. L. The arched and conic standards are a blending of coppery rose and golden brown with strong midrib. The falls are arched and flaring with the under color deep yellow completely flushed with the same color as the standards. Beard and styles are burnished gold. H. M., A. I. S. 1945. 37 in. \$5.00

**COPPER PINK** (W. M. Kellogg 1941) M. Medium to large flowers of rich pink flushed with sparkling copper in both standards and falls. A luscious coloring. H. M., A. I. S. 1942. Per. R. 88 1943. 38 in. \$1.00

**COPPER ROSE** (P. Cook 1941) M. A smooth blending of old rose, tan, and copper enlivened by a glow of golden yellow in the center of the bloom. The standards and falls are large, broad, and well formed. H. M., A. I. S. 1942. A. M., A. I. S. 1943. Per. R. 89 1943. 38 in. \$1.50

**CORDOVAN** (Kleinsorge 1946) M. A seedling of Bryce Canyon. The color resembles that of Cordovan leather with very rich and glossy tones of Ox-blood red flushed with copper. A large bold flower with standards of coppery rose, and broad falls distinctly fluted. Well branched. Stock limited. H. M., A. I. S. 1947. 36 in. \$4.00

**CORTEZ** (Nesmith 1934) V. L. The domed standards are yellow flushed with a rose border. The very flaring falls are intense crimson-purple. A brilliant iris. H. M., A. I. S. 1933. Per. R. 89 1938. 38 in. \$1.00

**COURTIER** (D. Hall 1947) M. The deepest pink of the Hall Flamingo pinks. Not quite as good form as Cherie, but the color is outstanding. Very prominent deep tangerine beard. Strong stalks and good branching. H. C., A. I. S. 1944. 30 in. \$10.00

**DANUBE WAVE** (Schreiner 1947) M. This medium blue comes from a crossing of Anitra and Narain, and combines the good qualities of the parents. A rich shade of marine blue that gives a very blue effect. Firm substance blooms, well branched stalk. H. M., A. I. S. 1948. 38 in. \$7.50

**DAYBREAK** (Kleinsorge 1941) M. Large golden pink with slight copper undertones. The ruffled flowers are well shaped with closed standards and semi-flaring falls. Well branched. A handsome iris. H. M., A. I. S. 1942. A. M., A. I. S. 1943. Per. R. 89 1943. 40 in. \$2.00

**DEEP NIGHT** (Corey 1947) M. An impressive flower of intense Mulberry purple, the nearest color to it is Grape juice (Maerz and Paul). The standards are broad, arched, and well held. The semi-flaring falls have a velvety over-lay of more brilliant color, surrounding the dark gold beard, and the bronzy flush at the haft is in striking contrast to the rest of the flower. The large, fragrant blooms have good substance, and are not at all crowded on the well balanced stalk. H. M., A. I. S. 1948. 36 in. \$6.00

**DEEP VELVET** (Salbach 1939) M. A rich, red violet of commanding form. The standards and falls are the same color except that the upper part of the falls is flushed with iridescent claret brown. H. M., A. I. S. 1941. A. M., A. I. S. 1942. Per. R. 90 1941. 38 in. \$1.00

**DESERT MOON** (Washington 1945) L. Tall and stately cream yellow with full ruffled flowers of extremely smooth finish, heavy substance, and exceptionally fine branching. A self with strong closely held standards, the flaring falls have short delicate reticulations of gold each side of the full yellow beard. The flowers have a delightful fragrance with superb branching. 42 in. \$3.50

**DESERT SONG** (FAY 1946) M. Large, cool, crisp blooms of cream that are beautifully formed with very broad standards and rounded flaring falls. The firm textured flowers have no haft markings, and are evenly spaced on tall well branched stalks. A very fine iris. H. M., A. I. S. 1946. 38 in. \$10.00

**DISPLAY** (Grant 1942) M. L. A noteworthy variety that is deep in color, yet carries well in the garden. The standards are deep mauve rose. The semi-flaring falls are velvety red shading to maroon at the haft. Wide branching. H. M., A. I. S. 1942. Per. R. 88 1943. 35 in. \$1.50

**DIVIDEND** (G. Douglas 1944) V. L. The deep chrome flowers are large, crisp, and firm with very distinctive orange brown thumb prints each side of the orange yellow beard. Well branched. R. 88 1944. 40 in. \$1.50

**DOWN EAST** (Tobie 1943) M. A self of anthracene purple with the falls seeming darker on account of their extreme velvety surface. The domed standards are broad and full. The falls are semi-flaring of very velvety finish. A deep but brilliant iris of good substance, sturdy stalks, and good branching. H. M., A. I. S. 1943. R. 87 1946. 37 in. \$3.00

**DREAMCASTLE** (Cook 1943) M. This rather deep orchid pink self has great carrying qualities in the garden. Both the standards and falls are very broad at the hafts and the almost white beard is in sharp contrast to the brightness of the flower. H. M., A. I. S. 1944. A. M., A. I. S. 1948. 38 in. \$7.50

**DREAM GIRL** (D. Hall 1944) M. One of Mr. Hall's Flamingo pinks that is deeper in color than Overture. The flowers are medium in size with no venations on the haft, and hold their color well. Although the rhizomes are never large, it increases rapidly. Good branching. Per. R. 86 1946. 30 in. \$5.00

**DRUM MAJOR** (G. Douglas 1947) M. L. The falls of Ox-blood red (Ridgway) are large and flaring, bordered with a lighter red that is the same color as the standards. The standards are very broad and roundly domed, with firm substance and clear color. The brighter red styles give an inner glow in pleasing contrast to the clean darker hafts and brown gold beard. Most red iris are liable to some bleaching in hot sun, but this one holds its color, form, and substance under most trying weather conditions. Five way branching sturdy stalks. 38 in. \$12.50

**DUET** (Grant 1942) M. L. A blend with a distinctive personality. The standards are honey beige with a pink flush around the heavy midrib. The center of the semi-flaring falls is pleroma violet with a wide border of the same color as the standards. Per. R. 87 1946. 38 in. \$1.00

**EASTER CANDLE** (Essig 1946) M. This large flowered iris is well named for it is a tall and stately white with a heavy gilding of rich yellow in the throat, so glowing that it seems as if it were a brilliant lighted candle. The highly domed standards are pure white, the falls are semi-flaring of white with yellow lightly brushed down on the hafts. Tall well branched stalks and vigorous growth. R. 88 1946. 48 in. \$5.00

**EASTER GOLD** (Essig 1946) M. L. One of the brightest yellows in the garden. In sharp contrast to Easter Candle it seems as if carved from pure gold. The flowers are not as large as some of the Essig iris but its pure golden color adds a new note in the yellow class. Smoothly finished flaring flowers with good branching and vigorous growth. H. M. A. I. S. 1946. R. 89 1946. 40 in. \$5.00

**EDWARD LAPHAM** (Lapham 1942) The color is rich glossy crimson and it is about the reddest iris in the garden. A self even to the hafts and throat of the flower, the smooth finish adds to the beauty of the trimly tailored blooms. H. M., A. I. S. 1940. Per. R. 88 1942. 35 in. \$3.00

**ELEGANS** (K. Smith 1943) M. A charming ruffled yellow with very smooth finish and ruffled form. Especially good for border planting. H. M., A. I. S. 1945. 33 in. \$3.00

**ELMOHR** (Loomis 1942) M. An impressive and handsome iris of the William Mohr progeny, and it has more red in it than any of the others. A large rounded flower of rich

reddish mulberry, very glossy and lustrous. H. M., A. I. S. 1942. A. M., A. I. S. 1944. Dykes Medal 1945. Per. R. 90 1945. Classed as an Eupogocyclus Hybrid. 34 in. \$1.00

**ELSA SASS** (H. P. Sass 1939) M. A refreshing iris of delicate lemon ice coloring. The medium sized flowers are frilled and in good proportion to the stalks. H. M., A. I. S. 1939. A. M., A. I. S. 1941. Per. R. 89 1941. 38 in. \$ .60

**ESQUIRE** (Lothrop 1945) M. L. Tall and commanding, this deep blue purple iris is as dark as Brunhilde (one of its parents) but with better form and taller. The flowers are crisp and firm with a smooth sheen over all that adds to its beauty. Large blooms on 4 way branching stalk. H. M., A. I. S. 1947. 45 in. \$12.50

**ETOILE D'OR** (G. Douglas 1943) M. Pure deep yellow self with firm texture and sparkling finish. The standards are domed and firmly held. The falls are semi-flaring with an overlay of deeper yellow that gives a velvety lustre to the bloom. Medium to tall in height with good branching. H. M., A. I. S. 1943. 38 in. \$2.50

**EXQUISITE** (Nesmith 1947) M. It is a self of light Congo pink (Ridgway), the color intensified by the pink beard and deeper styles and crests. The standards are domed, and firmly held by the strong midrib. The falls are semi-flaring, and the absence of reticulations brings out the smooth wax-like finish of the flowers, while the very pink buds give added charm to the whole effect. Three way branching stalks. H. C., A. I. S. 1944. 35 in. \$15.00

**EXTRAVAGANZA** (G. Douglas 1944) V. L. The best real amoena since Wabash. The standards are white with a slight shading of cream at the base of the strong midrib. The falls are a blending of iridescent copper, red, lavender, and deep violet with a violet sheen down the center. The form is trim and tailored with well domed conic standards, and the semi-flaring falls have a velvety finish. A very handsome flower with heavy substance. Strong four way branching stalks. H. M., A. I. S. 1944. A. M., A. I. S. 1947. Per. R. 89 1945. 40 in. \$8.00

**FAIRY LUSTRE** (Washington 1940) M. A light yellow self with such firm substance that the flower seems like smooth satin. The flowers are not marred by any venation, and this with the symmetry of form and fine branching give this iris a prominent place among the best yellows. H. M., A. I. S. 1940. Per. R. 86 1941. 38 in. \$1.50

**FANTASY** (D. Hall 1947) M. Charming and unusual, this orchid lavender has a most pleasing combination of color. The standards are orchid lavender, well domed and closely held. The semi-flaring falls are slightly deeper in color with a heavy golden yellow wash on the upper part, extending well into the throat. The tangerine beard gives a luminous quality to the flower. Firm, well formed blooms and good branching. H. C., A. I. S. 1944. H. M., A. I. S. 1947. 30 in. \$20.00

**FLAMELY** (P. Cook 1943) M. The conic domed standards shade from ocher red to terra cotta. The flaring falls are garnet brown. The flowers are medium to large of good substance and texture. Stalks are strong and sturdy. H. M., A. I. S. 1944. Per. R. 88 1945. 36 in. \$1.50

**FLORADORA** (D. Hall 1947) M. Medium in tone, this flamingo pink is made especially distinctive by its geranium red beard. The contrast of the beard is almost startling. A self with no markings on the haft, the well formed flowers are in good balance with stalk and foliage. 30 in. \$7.50

**FLORA CAMPBELL** (Hill 1940) M. An attractive iris with warm red brown and peach red so subtly blended that the whole flower is a glowing bit of color. Good substance. H. M., A. I. S. 1940. Per. R. 87 1942. 38 in. \$ .50

**FLORA ZENOR** (J. Sass 1942) M. The domed standards are rosolane pink. The arched and pendant falls are rosolane pink with a bit darker flush at the throat. The flower has the delectable coloring of a strawberry sundae enlivened by the tangerine red beard. H. C., A. I. S. 1941. H. M., A. I. S. 1942. A. M., A. I. S. 1944. Per. R. 86 1943. 40 in. \$1.00

**FORTUNE** (Kleinsorge 1941) M. L. A self of rich Florentine gold. The flowers have heavy substance, and the stalks are widely branched. R. 87 1942. 34 in. \$1.00

**FRANCELIA** (McKee 1944) M. A very bright chrome yellow, yet there is a depth of color that gives it a rich mellow tone. The standards are roundly domed and firm. The semi-flaring falls are broad and full, enlivened by the orange beard. Heavy substanced flowers on well branched stalks. H. C., A. I. S. 1942. H. M., A. I. S. 1944. Per. R. 89 1945. 38 in. \$4.50

**FRANCONIA** (Graves 1942) Cool and classic as white marble the large flowers have exceptionally smooth firm texture and are carried on strong stalks that have ideally spaced branches. The standards are well domed with strong midrib. The falls arched and flaring and in perfect proportion to the standards. H. C., A. I. S. 1941. H. M., A. I. S. 1942. Per. R. 89 1944. 40 in. \$3.50

**FRANK DRAKE** (Grant 1947) M. L. Some iris depend on color for their beauty, others on perfection of form and finish, and this one belongs in the latter class, for it is an iris with the heavy smooth substance and finish of marble. A cool reverse bicolor with standards of Reed yellow (Ridgway) completely domed and very firmly held. The very flaring falls are pure white with a generous overlay of Char-treuse gold surrounding the beard of the same color which is lightly tipped with white. Well branched and vigorous growth. 39 in. \$7.50

**FRANK PUGLIESE** (Lapham 1947) M. This iris might be described as a more red and glowing Christabel, and even more of a self. The standards are so deep that they seem the same shade as the lustrous falls. The whole flower is very free from venations and most colorful in the garden. Free flowering, nicely formed blooms, and well branched. 38 in. \$7.50

**FULL SAIL** (Wareham 1942) M. The standards are arched and firmly held, of white with just the faintest infusion of lavender. The White falls are very broad at the haft and semi-flaring. Well branched. 39 in. \$1.00

**GARDEN MAGIC** (Grinter 1936) M. L. An excellent red that continues to hold its place among the newer ones of this color. H. M., A. I. S. 1937. 38 in. \$1.00

**GENERAL PATTON** (Kleinsorge 1947) M. L. The introducer of this iris considers it one of the best from Dr. Kleinsorge. Brimming with color, this copper brown self has a metallic undertone that brings out the rich tones of the flower. Heavy substanced blooms with excellent branching. H. M., A. I. S. 1947. 39 in. \$15.00

**GIN FIZZ** (Wareham 1942) M. A beautiful white iris with the finish of frosted glass. The domed standards are firm and strong. The flaring falls are white with ivory flush. Fine form and excellent branching. 38 in. \$1.00

**GLAD TIDINGS** (Whiting 1947) M. L. A novelty among the light chrome yellows. The flowers are very large, widely flared, ruffled and of heavy waxy substance. On account of its low branching with the lower blooms opening first, it is ideal for flower arrangement. 34 in. \$4.00

**GOLD BEATER** (Kleinsorge 1944) M. Solidly colored chrome yellow self. It is a very bright deep yellow without marking of any other color. The buds are especially attractive on account of their intense coloring. The large flowers are well spaced on excellent branching stalks. H. M., A. I. S. 1945. Per. R. 88 1946. 36 in. \$3.00

**GOLDEN EAGLE** (D. Hall 1942) M. A large yellow with a satiny finish. It has a particular quality that seems to put life and brilliance into a light yellow and yet there is no hint of orange or amber in it. H. C., A. I. S. 1941. H. M., A. I. S. 1942. Per. R. 87, 1943. 36 in. \$1.50

**GOLDEN EPAULETS** (Grant 1946) M. L. A white and gold iris of extremely heavy substance, full rounded form and as smoothly finished as a piece of polished ivory. The standards are broad and very firmly held; the falls are full and flaring and the heavy flush of gold on the haft is as trim and precise as the epaulets on a uniform. Good branching and increases rapidly. 38 in. \$4.00

**GOLDEN FLEECE** (J. Sass 1940) M. A well known iris of cool lemon cream intensified by deeper lemon at the haft and around the edge of the falls. The graceful ruffled form and elusive coloring make it a great favorite. H. M., A. I. S. 1940. A. M., A. I. S. 1942. Per. R. 90 1942. 44 in. \$1.50

**GOLDEN MADONNA** (Essig 1940) M. This large light yellow has great clarity of color and beauty of form and finish. The standards are creamy yellow, the semi-flaring falls are milk white with a golden edge. Vigorous growth and good branching. 40 in. \$1.50

**GOLDEN MAJESTY** (Salbach 1938) M. The flowers are of domed form and of such gleaming gold that they stand out in the garden. H. M., A. I. S. 1939. A. M., A. I. S. 1940. Per. R. 90 1940. 42 in. \$ .60

**GOLD MEDAL** (Fay 1946) E. The earliest large flowered yellow to bloom in the garden. A self with broad standards and falls of rich chrome yellow. It makes a brilliant clump in the garden. Sturdy growth and good branching. 36 in. \$4.50

**GOLDEN MORN** (Essig 1946) E. M. A warm yellow with flaring form somewhat after the style of Easter Morn but of larger size and more firm texture. Its beauty is enhanced by the infusion of deeper glistening gold throughout. A striking flower with a most refreshing fragrance. Wide branching, sturdy growth. R. 88 1946. 45 in. \$4.00

**GOLDEN RUSSET** (D. Hall 1946) M. The name is descriptive of the color, and it is one of the largest flowers in existence. Tall with vigorous growth, it is spectacular in the garden. H. C., A. I. S. 1945. 40 in. \$7.50

**GOLDEN SPANGLE** (Cassebeer 1944) E. M. Deeper yellow than Golden Fleece, but with a very similar arrangement of color, this iris is thoroughly hardy, and always attracts attention in the garden. Ten blooms on tall well branched stalks. H. C., A. I. S. 1943. H. M., A. I. S. 1944. R. 86 1946. 40 in. \$1.00

**GOLD RUFFLES** (Muhlestein 1947) M. Huge flowers of medium yellow heavily ruffled and fluted at the edges of both standards and falls. The falls have some self venations, but they are not obtrusive in the general effect of the big bold flower. H. M., A. I. S. 1948. 40 in. \$10.00

**GOOD FORTUNE** (Mitchell 1945) M. A plicata that gives a pink effect. Both standards and falls have a white background definitely edged with lavender pink. Well branched stalks. 38 in. \$2.50

**GOOD NEWS** (Kleinsorge 1946) M. This is a sister seedling of Chamois and Bryce Canyon, and while not quite as tall, its brilliant color and floriferousness more than make up for this. A rich mustard gold self with wide domed and ruffled standards. The flaring falls have a banding of copper on the fluted edges. Beard dull gold. Good branching. H. M., A. I. S. 1947. 33 in. \$5.00

**GRAND CANYON** (Kleinsorge 1941) M. An unusual blend of plum, copper and gold. It reminds one of the French iris Charlotte Millet, but it is far more colorful. H. M., A. I. S. 1943. A. M., A. I. S. 1944. Per. R. 87 1943. 40 in. \$1.00

**GREAT LAKES** (Cousins 1938) M. Clear in color, and with ideal form and carriage this iris is one of the best in the light blue class. The standards are firm and roundly domed. The falls are very flaring. Winner of the Dykes Medal in 1942. H. M., A. I. S. 1939. A. M., A. I. S. 1940. Per. R. 91 1939. 40 in. \$1.00

**GREIG LAPHAM** (Gage 1948) M. During the years of their close friendship, Mr. Gage had wished to name a fine iris for Mr. Lapham, and he as well as other iris fanciers consider this one well worthy of the honor. A smoothly finished medium yellow self with a wonderful mellowness of color. The domed standards and semi-flaring falls are trimly formed with absolutely no venations to mar the firm velvety substance of the flowers. Rich orange beard with soft yellow tips. Free flowering, and increases rapidly. 3 branches and terminal. H. C., A. I. S. 1946. H. M., A. I. S. 1948. 36 in. \$10.00

**GREEN PASTURES** (Heller 1947) L. Pale chartreuse yellow flowers of large size and most unusual color. The touch of blue at the tip of the beard is most effective and accentuates the cool green tones of the bloom. Tall and free flowering, it is especially nice for flower arrangement. H. C., A. I. S. 1945. H. M., A. I. S. 1947. 42 in. \$10.00

**GULF STREAM** (Fay 1946) M. A deep blue iris that has won high acclaim from iris enthusiasts in many parts of the country. It is an absolute self with no haft markings, even the beard is blue. While all dark blue iris have some purple in their pigment, this one is much more blue than any very dark iris that I have seen. Vigorous growth and thoroughly hardy. H. C., A. I. S. 1945. H. M., A. I. S. 1946. R. 88 1946. 37 in. \$6.50

**GYPSY** (Kleinsorge 1944) L. Very late flowering iris that is quite different from any other variegata. The coppery gold standards and falls of uniform chestnut brown form a very sharp contrast and attract the attention of all garden visitors. Large flowers on very tall well branched stalks. H. M., A. I. S. 1945. R. 88 1946. 48 in. \$2.00

**GYPSY BARON** (Schreiner 1942) E. M. A very different plicata with mulberry marbling and striations on a silvery white background. The flowers are very deep in color with medium large blooms set off by a dull gold beard. Three well spaced branches. Per. R. 84 1945. 40 in. \$1.50

**HELEN MCGREGOR** (Graves 1946) M. L. Seldom has an iris been greeted with such enthusiastic praise as Helen McGregor. The color is clear blue, lighter than Great Lakes and with not a trace of lavender in it. The flowers are large of rounded form with very broad hafts and beautiful ruffling on the border of both standards and falls. There is a silvery white flush surrounding the almost white beard that enhances the beauty of the blooms. The flowers have exceptionally heavy substance and the very sturdy stalks are adequately branched to display the blooms. The refinement of form and beauty of color are ideal and quite different from any other iris. H. C., A. I. S. 1943. H. M., A. I. S. 1946. A. M., A. I. S. 1948. R. 91 1946. 36 in. \$10.00

**HIT PARADE** (D. Hall 1947) M. Mr. Hall has so many pinks that it is hard to choose the best. The color of this one is between Courtier and Floradora, and the flowers are larger. Tangerine beard. All these pinks bloom freely and increase rapidly. 30 in. \$10.00

**HOOSIER SUNRISE** (Lapham 1942) M. A very attractive blend of mauve pink and yellow. The large flowers with broad standards and falls have excellent substance. The stalk is strong and sturdy with good branching. H. M., A. I. S. 1943. Per. R. 88 1944. 40 in. \$1.00

**INNOVATION** (D. Hall 1945) M. Rose trimmed plicata with large flowers of good form and substance. It gives a very pink effect in the garden. It is a strong grower, blooms freely and is hardy. H. M., A. I. S. 1947. R. 87 1946. 38 in. \$3.00

**INVICTUS** (D. Hall 1941) M. Very deep yellow with a subdued orange tone. The flowers are large, of good substance, and carried on very well branched stalks. H. M., A. I. S. 1940. Per. R. 88 1941. 38 in. \$ .75

**JASMINE** (Grant 1944) M. A very smooth golden yellow without any brown or orange tones. The flowers are clear in color with a velvety sheen on the falls. The standards are domed, the falls semi-flaring and full. There are no haft markings, and the velvety surface of the falls extends down into the throat. The flowers have a gardenia texture and are evenly spaced on well branched stalks. H. M., A. I. S. 1944. R. 89 1945. 40 in. \$7.00

**JASPER AGATE** (Mrs. T. A. Williams) M. Distinctive in its combination of color, this medley of gold, copper red, and a flush of rose throughout the flower is difficult to describe, but it is very lovely. Not large or tall, but the rich lustrous blooms give a new note of color in the garden. H. M., A. I. S. 1944. R. 89 1946. 34 in. \$3.00

**JAVA SKY** (Wareham 1942) M. An iris with a brilliant blending of colors. The highly domed standards are Etruscan red strongly suffused with golden copper along the firm midrib. The falls are the same color with a gleaming overlay of Hortense violet in the center and around the edge a narrow border of copper gold. Heavy substanced flowers and sturdy stalks. Per. R. 87 1945. 39 in. \$8.50

**JONQUIL** (Whiting 1943) M. Large flowers of soft clear yellow distinctly edged with deeper yellow on both standards and falls. R. 88 1942. \$1.00

**JOY** (C. Carpenter 1942) M. A blending of copper, orange, red, and violet. The flowers are not large, but so brilliant that they stand out in the garden. A gem for border planting or as a cut flower. H. M., A. I. S. 1943. R. 88 1943. 24 in. Classed as a Border Iris. \$1.00

**JULIET** (Kleinsorge 1946) M. This iris has been described as one of the most colorful and fiery blends of the present day. The large flowers have a basic color of flame copper suffused with shades of salmon, and its center area and beard are of the brightest burnt orange. The standards are well closed, the falls broad and flaring. Increases rapidly. H. M., A. I. S. 1947. 36 in. \$5.00

**KATHERINE FAY** (Fay 1945) M. This is considered one of the best whites and has won high praise especially in the middle west. The standards are ruffled and tightly closed, the falls are semi-flaring with enough ruffling to take away any tailored appearance. Excellent substance and branching. H. C., A. I. S. 1944. H. M., A. I. S. 1945. A. M., A. I. S. 1947. Per. R. 89 1945. 35 in. \$5.00

**KATHARINE LARMON** (Graves 1942) M. A luminous blend of honey yellow, burnished copper. The standards are honey yellow, semi-domed and charmingly ruffled. The arched and flaring falls have an under color of yellow flushed with copper, and a touch of mauve below the orange beard. R. 87 1946. 38 in. \$1.50

**KATIE BELLE** (G. Douglas 1947) M. L. This iris is a cross of Melitza x Radiant, but does not resemble either parent, for it is a large, lustrous bicolor blend. It might be termed a larger, broader, and more flaring Brown Thrasher with golden lights throughout the flower. In detail, according to Ridgway, the standards are Ochraceous orange flushed with Sanford's brown, very broad and full, almost covering the styles. The Sanford's brown falls are semi-flaring with faint threads of gold around the brilliant orange beard. A most floriferous iris with ruffled flowers of firm substance on sturdy stalks. 38 in. \$5.00

**KEARSARGE** (Graves 1946) M. L. Large flowers with the coloring shading more to lavender and not as light in tone as Helen McGregor. The domed standards are broad, the falls arched and flaring with firm texture. Both standards and falls have a silver edging that adds to the sheen that envelops the flower. The blooms are beautifully poised on widely branched stalks. R. 89 1946. 42 in. \$5.00

**KENTUCKY BEAUTY** (C. Carpenter 1943) M. Lighter than Lighthouse, this iris gives the effect of bright rose. The standards are arched and domed with a strong midrib of white showing through the rose. The semi-flaring falls are not quite as dark as the American Beauty Rose. An iris of quality. R. 86 1943. 38 in. \$2.00

**LADY BOSCAWEN** (Graves 1946) M. Frilled and ruffled, this very pure white seems to be even more lovely than the previous whites from Dr. Graves. A very large clear white self with broad fluted standards and extremely flaring falls delightfully ruffled. The substance is strong and firm and the flowers are well spaced on tall graceful stalks. An iris that always impresses one with its purity of color and beauty of form. Thoroughly hardy, having withstood many trying winters. H. C., A. I. S. 1943. H. M., A. I. S. 1946. A. M., A. I. S. 1948. R. 90 1946. 42 in. \$7.50



**LADY LOUISE** (Graves 1947) M. L. A patrician iris that was named for that gracious lady, Mrs. Louise Blake of Spartanburg, S. C. Distinctive in both color and pattern, the large, broad ruffled standards of Colonial buff (Ridgway) are roundly domed and firmly held by the very strong midrib. The falls are iridescent white with a clear fluted border of Colonial buff, widening each side of the orange beard, and blending in to the slightly deeper buff of the styles. The fascinating buds are an added attraction with their olive yellow coloring contrasting strongly with the Lime green midrib, and showing plainly the ruffling of the flowers even in the folded buds. Firm substanced flowers, well spaced on four way branching sturdy stalks. Free flowering with strong growth. H. M., A. I. S. 1947. 44 in. \$12.50

**LADY MOHR** (Salbach 1944) E. M. A distinctive iris that has charm and grace to a marked degree. It is entirely different in color from any iris with onocyclis blood. The flowers are large and of rounded form with standards of oyster shell white, cupped and firmly held. The falls are chartreuse yellow with a lovely large red-violet blotch which radiates out into the fall and adds to the beauty of the flower. Good branching and firm substance. H. M., A. I. S. 1944. A. M., A. I. S. 1947. Per R. 89 1946. 40 in. Classed as an Eupogocyclis Hybrid. \$5.00

**LADY NAOMI** (Fay 1941) M. Sanded pale lavender with a network of violet lines in the falls, so delicate that the undercolor seems to disappear. H. M., A. I. S. 1942. Per R. 86 1944. 38 in. \$.75

**LAKE BREEZE** (Fay 1945) M. Large very ruffled light blue with just a suspicion of pink delicately diffused on the center of the standards and falls. The flowers are slightly larger and deeper in color than Gloriola one of its parents, with broad full standards firmly held and almost meeting over the beard. The falls are flaring and wide with no haft markings. There is an attractive shading from light to deeper blue in each flower as if it were illumined by a shining light. Vigorous and thoroughly hardy, well branched stalk. H. C., A. I. S. 1944. H. M., A. I. S. 1945. Per R. 88 1946. 37 in. \$5.00

**LAKE GEORGE** (K. Smith 1945) M. L. A self of blue violet (Ridgway) shading darker at the hafts. The standards are roundly domed. The falls are very flaring with no color other than blue showing on the hafts. Beard light yellow tipped blue at the end. The garden effect is a smoothly finished blue with trim flaring form. H. C., A. I. S. 1944. H. M., A. I. S. 1945. R. 87 1946. 38 in. \$5.00

**LAKE SHANNON** (De Forest 1945) M. The name suggests the clear blue water of a mountain lake and it is very descriptive of this medium blue that gives a very blue effect in the garden. The standards and falls are wide and fluted with a beautiful well branched stalk that allows three flowers to be open at one time without any crowding. H. M., A. I. S. 1946. R. 88 1946. 36 in. \$6.00

**LANTERN GLOW** (Washington 1939) M. A warm white with a glowing yellow center. Roundly domed standards of ivory white shading to yellow on the midrib. The falls are flaring with background of cream white heavily brushed with Indian yellow extending half way down the falls. Beard yellow. Exceptionally heavy substance. 38 in. \$2.00

**LAVENDER MIST** (D. Hall 1948) M. Large light lavender flowers with a cool frosty sheen enveloping the whole bloom. Very free flowering, it makes a lovely clump in the garden. Form, substance and branching good. 34 in. \$1.00

**LIGHTS ON** (Lapham 1946) M. Mr. Lapham has produced many fine red iris, but this one is considered the best of his that has been introduced. The clean cut flowers are of uniform color with no veining to detract from the smooth finish. Medium in height, but very pure red in color, it stands close inspection, whether as an individual flower or in the garden. H. M., A. I. S. 1946. 33 in. \$7.50

**L. MERTON GAGE** (Lapham 1942) M. A very lovely blend of light raspberry pink and creamy yellow with medium sized flowers of firm substance. Beautifully branched sturdy stalks, and long season of bloom. H. M., A. I. S. 1942. Per R. 87 1943. 40 in. \$1.00

**LORD DONGAN** (K. Smith 1940) M. Stunning creation with broad standards of Chinese violet and wide rounded falls of velvety Corinthian purple with no haft venations. The thick pale yellow beard lights up the center of the flower emphasizing the depth of color in this sturdy iris. H. M., A. I. S. 1940. Per. R. 88 1942. 37 in. \$2.00

**LOTHARIO** (Schreiner 1942) M. L. A very handsome iris that has the same general color pattern as Amigo, but with larger flowers and much taller stalks. The light lavender blue standards and rich velvety purple falls are not in quite as sharp contrast, but its beauty is outstanding. H. M., A. I. S. 1945. Per. R. 87 1946. 38 in. \$3.00

**LOUISE BLAKE** (K. Smith 1943) M. A delightful iris that was named for a charming gentlewoman. The standards are light chicory blue, fluted at the edge. The velvety falls are deep hyssop violet with a sheen of rich copper near the throat, and bordered by a rim of chicory blue. The sharp contrast between the pale blue standards and rich blue purple falls is most effective. H. C., A. I. S. 1942. H. M., A. I. S. 1944. A. M., A. I. S. 1947. Per. R. 85 1946. 30 in. Classed as a Border Iris. \$4.00

**LOVE AFFAIR** (Mitchell 1946) M. A rose pink plicata with standards flushed and stippled with rose on a white background. The falls are broadly edged with the rosy color. The medium sized flowers are gracefully carried on low branched stiff stalks. First prize at the 1946 Oakland Spring Garden Show. 34 in. \$2.50

**LYNN LANGFORD** (D. Hall 1946) M. The color of this iris is most distinctive with its orchid pink tones, enlivened by the golden throat and beard. The flower is large, of good form, and the color is most pleasing. A lovely iris of charm and refinement. Heavy substanced flowers and good branching. H. C., A. I. S. 1945. H. M., A. I. S. 1946. R. 89 1946. 36 in. \$8.00

**MAJENICA** (P. Cook 1941) M. Lovely pinkish blend with a flush of salmon throughout. The standards and falls are wide petaled with strong firm substance. The color is bright and clear, the flowers are of good full form. H. M., A. I. S. 1943. R. 88 1946. 36 in. \$1.00

**MANDALAY** (D. Hall 1943) M. Deep pink blend that has received much favorable comment. It is a self in a new and attractive color. The smooth finish and wealth of bloom make this most effective in the garden. H. M., A. I. S. 1943. Per. R. 87 1946. 34 in. \$1.00

**MARY ELLEN** (McKee 1947) L. The Ox-blood red flowers (Maerz and Paul) are very large and have great depth of color, yet there is a brilliance about them that is seldom found in a red iris. The closely domed standards are firmly held by the heavy Green gold midrib with just a bit of gold extending up from the base of the standards. The falls are wide, velvety, and flaring, flushed with a deeper tone in the center, and finished with a ruffled marginal edging of Rosy red that is exactly the same shade as the standards. Broad beard of rich yellow. Heavy substanced flowers evenly spaced on tall well branched stalks. H. C., A. I. S. 1946. H. M., A. I. S. 1947. R. 90 1946. 40 in. \$8.00

**MARY VERNON** (McKee 1942) M. The roundly domed standards are antique gold with a flush of Chianti ruby along the midrib. The broad flaring falls are Chianti ruby with a narrow edging of the same gold as in the standards. The falls are very velvety with no reticulations at the throat. A flaring flower of strong substance, excellent form and branching, and gives a very red-brown effect in the garden. H. C., A. I. S. 1941. H. M., A. I. S. 1942. A. M., A. I. S. 1945. Per. R. 88 1945. 37 in. \$2.50

**MASTER CHARLES** (Williamson 1943) M. A most impressive iris. I am charmed by its rich glowing mulberry color and rounded form. The flower has a wonderful sheen that gives it life and finish. The poise of the flowers on the well branched stalk is exceptionally good. H. M., A. I. S. 1944. A. M., A. I. S. 1946. Per. R. 89 1946. 38 in. \$3.50

**MEDITERRANEE** (Wareham 1940) M. Lovely in color as the sparkling surface of the Mediterranean Sea in the morning sunlight, this light French blue self stands out in the garden. The large firm flowers of rounded flaring form have a smoothly finished surface, and are well poised on amply branched stalks. R. 88 1941. 40 in. \$1.00

**MELANIE** (Hillson 1941) M. A tall orchid pink with greater depth of color than most in this class. The large flowers have good substance. The stalks are well branched. H. M., A. I. S. 1941. Per. R. 88 1943. 45 in. \$ .75

**MELITZA** (Nesmith 1940) M. The standards are delicate ivory, domed and firm. The falls have the same coloring with a slightly deeper flush around the beard. The beard is intense pinkish tangerine, so vivid that the whole flower seems infused with this brilliant color. The flowers are nicely placed on well branched stalks. H. M., A. I. S. 1940. A. M., A. I. S. 1942. Per. R. 88 1941. 40 in. \$ .75

**MEXICO** (Kleinsorge 1943) L. A blended bicolor of brilliant coloring. The golden buff standards are closely domed. The falls are glowing red brown with a heavy plush-like finish. The flower is large, the stalk strong and sturdy. H. M., A. I. S. 1944. Per. R. 87 1946. 36 in. \$2.00

**MIMOSA GOLD** (Douglas 1947) M. L. Anyone that has seen mimosa or acacia in full bloom can visualize the bright sparkling effect of this brilliant yellow in the garden. The flowers are clean cut and smoothly finished, with firm domed standards of Pinard yellow (Ridgway), and flaring falls of the same color with a bright gold overlay at the ruffled edges. Bright orange beard. This iris sets a standard for late blooming yellows, not only for its firmly textured flowers, but for the spacing of the five way branching stalks with the lower ones being re-branched, 38 in. \$11.00

**MINNIE COLQUITT** (H. Sass 1942) M. Very gay and spectacular is this brilliant plicata. Both standards and falls are white bordered by wine purple. The flowers are large and firm, the stalk is widely branched. Plant near cream or white iris for best effect. H. M., A. I. S. 1943. A. M., A. I. S. 1945. Per. R. 88 1944. 40 in. \$3.00

**MIOBELLE** (McKee 1945) L. A subdued but warm rose blend with a slight undercast of golden copper in the center of the flower. A profuse bloomer of rapid increase and has proven to be a valuable parent. It is a late flowering variety with the widest and most sturdy branching that I have seen. Tall, vigorous and hardy. H. C., A. I. S. 1943. H. M., A. I. S. 1945. R. 89 1946. 40 in. \$2.50

**MIOGEM** (McKee 1947) M. A most unusual blend of wine, Fuchsia red, and blue intermingled with brownish tones, giving a bright iridescent effect that is very fascinating. The standards are a blending of Fuchsia red and China rose (Maerz and Paul) with a greenish midrib holding them firmly closed. The flaring falls are a deeper shade of Fuchsia and China rose, broad and full at the hafts, with a blue blaze at the base of the orange beard, and a ribbon ruffle of brown edging the falls. Full flowers of very firm texture, well placed on four way branching stalks. H. C., A. I. S. 1945. H. M., A. I. S. 1947. 36 in. \$8.00

**MIRABELLE** (Whiting 1941) M. A luscious pink and apricot blend. The flowers are large with a glistening texture. The stalks are tall with good branching. H. M., A. I. S. 1941. R. 86 1943. 38 in. \$3.50

**MIRROR LAKE** (Muhlestein 1947) M. A light blue of large size and ruffled flaring form. The well substanced flowers give a very blue effect in the garden. H. M., A. I. S. 1948. 42 in. \$6.00

**MISSION MADONNA** (Essig 1946) E. M. Lighter in color than Golden Madonna this soft creamy white has large flowers of heavy substance and rounded form. Both the standards and falls have fascinating picoted edges that give an entirely different and charming effect from any other creamy white. The ground color is white with a flush of creamy yellow on the haft coming down to the tip of the full yellow beard. H. C., A. I. S. 1945. R. 88 1946. 40 in. \$5.00

**MOONLIGHT MADONNA** (J. Sass 1943) M. One of the finest two toned yellows. Of the same coloring as Elsa Sass, with larger flowers and more flaring form. Beautifully ruffled flowers. Good branching. H. M., A. I. S. 1943. A. M., A. I. S. 1945. Per. R. 89 1944. 36 in. \$2.00

**MOONTIDE** (McKee 1946) M. A large well rounded flower of rich cadmium yellow that is entirely different from his *Francelia* both in color and form. The standards are broad and roundly domed, the wide flaring falls are thick textured and decidedly velvety in finish. Beard orange. The mellowness of color in the firm substanced flowers makes it a high ranking favorite in the garden. H. C., A. I. S. 1945. H. M., A. I. S. 1946, R. 90 1946. 40 in. \$7.50

**MOUNT BLANC** (Grant 1946) M. L. Pure white blooms with very flaring form and the heavy substance of a magnolia blossom. Even in the crowded field of white iris this stands out on account of its exceptionally fine form, smooth strong texture and wide low branching. Large full-bodied flowers slightly ruffled at the edges and with no haft markings. Vigorous growth and strong sturdy stalks. 39 in. \$6.50

**MOUNT HERMON** (Lowry 1945) M. There are many white iris, but this cool thick textured iris ranks with the best. The flowers are exceptionally well balanced with closed cupped standards, and a distinct silver edging. The broad falls are semi-flaring with no markings around the pale lemon yellow beard. The heavy substance in the flowers withstands wind and hot sun. A lovely iris with a delicious fragrance. H. C., A. I. S. 1944. H. M., A. I. S. 1945. Per. R. 88 1946. 42 in. \$6.00

**MT. McKINLEY** (Schreiner 1947) E. M. An early flowering variety coming from Amigo and Wabash with blooms slightly larger than those of Wabash, and with better branching. When the flower first opens the standards have a touch of blue, quickly changing to pure white. The falls are rich without margining or veining and the chestnut flush at the haft adds to the color contrast. 38 in. \$3.50

**MT. VERNON** (Washington 1941) M. Clear white self of fine form. The standards are broad and highly domed. The falls are smoothly finished with no marking at the throat. Sturdy stalks and good branching. 36 in. \$1.50

**MULBERRY ROSE** (Schreiner 1941) M. A large flower of attractive color, and quite different from other irises in commerce. It stands out in the garden on account of the novel color and strong well branched stalks. The color effect is bright rose purple. H. M., A. I. S. 1943. A. M., A. I. S. 1944. Per. R. 88 1943. 40 in. \$1.25

**NANCY HARDISON** (G. Douglas 1945) M. L. So many pinks have an orchid tone but this iris is definitely a peach pink with the softest blending of pale yellow concentrating in the beard and heart of the flower. The standards are arched and ruffled. The flaring falls are broad at the hafts. The flowers have firm substance, flowers evenly spaced on four branching stalks. H. C., A. I. S. 1943. 36 in. \$5.00

**NED LEFEVRE** (Lapham 1942) M. Glowing rose blend with yellow underlay that gives the flowers a coppery rose effect. The blooms are of good substance. The stalks are tall and sturdy. Per. R. 86 1945. 38 in. \$ .75

**NEW SNOW** (Fay 1946) M. This iris is well named for it is just as pure in color as newly fallen snow. The flowers are large and ruffled, with no venations. Just the full bright yellow beard that emphasizes the purity of the bloom. Tall, well branched stalks. H. C., A. I. S. 1945. H. M., A. I. S. 1946. A. M., A. I. S. 1948. R. 90 1946. 40 in. \$10.00

**NIGHTFALL** (D. Hall 1942) M. Deeply colored and very handsome bicolor. The falls are velvety pansy purple. The standards are lighter, thus making a color contrast. Excellent substance and branching. H. C., A. I. S. 1941. H. M., A. I. S. 1943. A. M., A. I. S. 1945. Per. R. 88 1944. 36 in. \$1.00

**NIGHTINGALE** (D. Hall 1942) M. A golden russet flower that is a new shade and very effective. The flowers are large with a glistening finish, and are evenly spaced on well branched stalks. A color that stands out in the garden. H. M., A. I. S. 1944. Per. R. 87 1944. 36 in. \$1.25

**NORTHMAN** (G. Douglas 1943) M. L. Large clear white of rounded form. A wide petaled flower with standards held together, and falls flaring and broad at the throat. There is a dense opaque quality in the flower especially in the falls that is quite different from other whites. Later than Sharkskin. R. 89 1943. 40 in. \$2.00

**OCCIDENTAL** (Mitchell 1945) M. Clear cream yellow plicata with reddish stippling at the base of the falls giving a distinct and pleasing effect. The flowers are carried on tall, well but closely branched stalks. 39 in. \$2.00

**OLA KALA** (J. Sass 1943) M. The ruffled flowers are medium to large in size with standards closely held and semi-flaring falls. A very brilliant flower of orange yellow that withstands wind and bad weather. Well branched stalks. H. C., A. I. S. 1942. H. M., A. I. S. 1943. A. M., A. I. S. 1945. Dykes Medal 1948. Per. R. 89 1944. 38 in. \$2.50

**OLD LACE** (Mitchell 1945) M. A unique bicolor blend with ruffled standards of palest parchment and a suggestion of mauve through the center. Base color of the falls is the same as the standards with a broken wash of mauve. Good habit of growth. 36 in. \$3.50

**OLYMPIAN** (G. Douglas 1948) M. Imposing and quite different, this handsome iris is most resplendent in the garden. It is a bi-tone with perfectly domed standards of buff lightly blended with rose. The flaring and very broad falls are rosy brown with a deeper velvety flush of rose in the center. The flowers are very large of heavy thick substance, and have great weather resistance. The exceptionally fine branching allows perfect placement of the 10 or more blooms on the strong tall stalk. 42 in. \$11.00

**ORANGE GLOW** (Cassebeer 1943) M. This most attractive iris has the brilliance of a ruddy sunset glow. The standards are coppery gold, firm and strong. The semi-flaring falls are bright reddish terra cotta overlaid with a velvety sheen. Larger and more brilliant than Radiant. H. C., A. I. S. 1941. H. M., A. I. S. 1944. R. 88 1946. 35 in. \$1.50

**OVERTURE** (D. Hall 1944) M. This iris is one of the first Flamingo pinks from Mr. Hall. A larger flower than that of Dream Girl, and slightly lighter in color. Good subtanced flowers with fair branching stalk. Small rhizomes, but it increases rapidly. H. C., A. I. S. 1943. H. M., A. I. S. 1944. Per. R. 87 1946. 36 in. \$5.00

**PAGAN PRINCESS** (G. Douglas 1948) M. Something new! The first deep pink with a brilliant tangerine beard. The conic, closely held standards of Persian pink (nearest color in Maerz and Paul) with firm texture. The flaring falls are deeper in tone (Persian rose. R.H.S.) with a narrow edging of the same color as the standards. The color extends well into the center of the flower; no venations mar the haft. The bright tangerine beard is in striking, but pleasing contrast to the rosy pinkness of the flower. We offer this iris to those interested in breeding the new tangerine bearded pink-huds, not as the ultimate in pink, but rather as a great advancement in deeper coloring and also as an iris of new color effect in the garden. H. M., A. I. S. 1948. 38 in. \$10.00

**PALE PRIMROSE** (Whiting 1946) L. Cool primrose yellow with a flush of wax yellow at the haft. The heavy subtanced flowers have an oval shape with the broad standards closely swirled, and the wide falls nearly meet. Good branching. 38 in. \$1.50

**PATH OF GOLD** (E. L. Hodson 1943) E. A delightful yellow dwarf iris that is well named for it literally makes a Path of Gold. The plants are very floriferous and hardy, a gem for bordering a path, in a rock garden or about a pool. 9 in. \$1.50

**PENN CHARTER** (H. F. Hall 1948) L. Yellow iris with flaring form are rare, but here is one, a brilliant yellow self of flaring form with glistening finish, and substance of velum. The standards of aureolin yellow are broad, strong, and firmly domed. The almost horizontal falls are slightly ruffled at the tips, of the same color as the standards. Beard and styles same tone. Clarity of color and great garden value characterize this clean cut iris. Exceptionally heavy subtanced flowers with 8 to 10 blooms on widely branched strong stalks. Last season during an excessive downpour of rain, it remained untouched. 40 in. \$15.00

**PENSIVE** (Grant 1947) M. Few very dark iris have depth of color, excellent form and substance, but in Pensive we find all three. It is a self of velvety blackish purple, with uniformity of color throughout. A cross of Sable x Deep Velvet, it has better branching, substance, and nonfading qualities than either of its parents. One of the most pleasing dark iris of recent years, and has been praised by many iris lovers. Heavy subtanced flowers, good branching, and vigorous growth. 38 in. \$7.50

**PERSIAN PRINCE** (H. P. Sass 1941) M. A very brilliant variegata with clearer color than City of Lincoln, but lacking the yellow rim on the falls. The standards are clear yellow, the broad falls are velvety ox-blood red. H. M., A. I. S. 1942. R. 87 1943. 36 in. \$ .75

**PHOEBE** (G. Douglas 1941) M. L. The extremely broad standards are a blending of pale yellow and javel green. The wide falls are semi-flaring with an undercolor of yellow heavily overlaid with green gold deepening decidedly toward the throat. Broad beard of javel green. H. M., A. I. S. 1941. Per. R. 87 1942. 40 in. \$1.50

**PICOTEE** (C. P. Connell 1942) E. M. The standards and falls are very pure white bordered with pencillings and dots of deep Cadet blue. Flowers very freely and gives the bluest effect of any plicata in the garden. Excellent for mass planting. R. 87 1942. 38 in. \$1.00

**PINK CAMEO** (Fay 1946) E. The name is most descriptive for the color reminds you of the lovely pale pink cameos that before the war were found in the quaint little shops on the Ponte Vecchio in Florence, Italy. Delightful in color, the orange tangerine beard is in pleasing contrast to the smoothly finished flowers. A self with lightly flaring blooms, evenly spaced on well branched stalks. H. C., A. I. S. 1945. H. M., A. I. S. 1946. A. M., A. I. S. 1948. R. 89 1946. 36 in. \$10.00

**PINK LACE** (J. Sass 1947) M. Lightly ruffled flowers of rosolane pink, flushed at the heart of the bloom by the distinct tangerine beard. The medium sized flowers are smoothly finished, and add a charming bit of color to the garden. Well branched stalk. 36 in. \$7.50

**PINK REFLECTION** (P. Cook 1942) L. A chamois skin pink blend of great individuality and charm. Clean cut flowers of flaring form, good size and substance. A late flowering variety of exquisite coloring, sturdy growth and good branching. H. M., A. I. S. 1942. A. M., A. I. S. 1944. Per. R. 89 1944. 36 in. \$3.00

**PRAIRIE SUNSET** (H. P. Sass 1939) M. L. The brilliant colors remind one of a glowing sunset. All pink, apricot and Golden copper, this iris cannot be described, it must be seen to fully appreciate its exquisite color harmony. H. M., A. I. S. 1937. A. M., A. I. S. 1941. Per. R. 93 1939. Dykes Medal 1943. 34 in. \$1.00

**PREMIER PEACH** (D. Hall 1946) M. A further advancement in the flamingo pinks from Mr. Hall. A self of clear peach pink with well domed standards and semi-flaring falls. There are no haft markings, and the delicious coloring is most captivating. Good substance and branching. H. C., A. I. S. 1944. H. M., A. I. S. 1946. R. 88 1946. 34 in. \$8.00

**PRINCE OF ORANGE** (Kleinsorge 1940) M. Solid golden orange flowers of medium size and flaring form. Great garden value. H. M., A. I. S. 1942. A. M., A. I. S. 1944. Per. R. 87 1944. 36 in. \$ .75

**PRISCILLA** (Whiting 1942) M. A white that is very white for it has no touch of any other color, even the beard is pure white. It is a gem for any garden. H. M., A. I. S. 1943. A. M., A. I. S. 1947. Per. R. 87 1944. 26 in. Classed as a Border Iris. \$1.50

**RADIATION** (D. Hall 1948) M. Beautiful in color and form; in my estimation this is the finest iris that Mr. Hall has produced. It is a self with large firm subtended flowers of glistening orchid pink with perfectly domed standards and flaring falls set off by the deep tangerine beard. The stalk is well branched and sturdy. Too much cannot be said in praise of this lovely iris. H. C., A. I. S. 1947. H. M., A. I. S. 1948. 32 in. \$20.00

**RAEJEAN** (Whiting 1940) L. A two toned yellow with closely domed standards and wide flaring falls of lighter tone edged with deeper yellow. H. M., A. I. S. 1942. Per. R. 87 1943. 38 in. \$ .75

**RAINBOW ROOM** (J. Sass 1946) M. A remarkable blend, so named because it seems to contain all the colors of the rainbow. The standards are antimony yellow. The falls are bordered with the same yellow, merging into lilac toward the center with a metallic blotch at the end of the bright yellow beard. Good substance and branching. H. C., A. I. S. 1945. H. M., A. I. S. 1947. 36 in. \$20.00

**RANGER** (Kleinsorge 1943) L. Large long flower of almost true crimson that is very brilliant in the garden. It is a self with strong firm texture in both standards and falls. One of the last to bloom. Very floriferous with strong stalks and fine branching. H. M., A. I. S. 1944. A. M., A. I. S. 1946. Per. R. 88 1946. 36 in. \$3.00

**RED AMBER** (Lcomis 1942) M. A very handsome iris that is much more rose than red. A smooth refined flower with nice form and excellent substance. Similar in color to Rosy Wings, but a larger flower. Tall, well branched. H. M., A. I. S. 1943. Per. R. 88 1944. 40 in. \$1.50

**RED GLEAM** (Lapham 1939) M. Brilliant red iris with strong well branched stalks. The standards are glowing red, broad and arched. The flaring falls are rich velvety red bordered by lighter red. H. M., A. I. S. 1940. A. M., A. I. S. 1941. Per. R. 87 1941. 35 in. \$1.00

**RED MAJESTY** (G. Douglas 1946) L. The color is deep Eugenia rose (Ridgway), a self except for the yellow infusion at the center of the flower. The blooms are large of rather rounded form with standards flushed yellow at the base of the strong midrib, the falls semi-flaring, overlaid with the same rich yellow around the thick yellow beard. The perfect placement of the flowers on the five way branching stalk allows four flowers to be open at one time with no crowding. Heavy subtended blooms, vigorous growth. H. C., A. I. S. 1945. H. M., A. I. S. 1948. R. 87 1946. 42 in. \$9.00

**RED TORCH** (H. P. Sass 1947) M. A very brilliant and richly colored variegata of outstanding beauty. The standards are glowing bronze gold with falls of the purest red, smooth velvety finish with no markings to detract from the purity of color. A perfect color jewel with heavy substance and flaring form. Medium height and excellent branching. H. C., A. I. S. 1944. H. M., A. I. S. 1947. 35 in. \$6.00

**RED VALOR** (Nicholls 1939) M. Deep garnet red iris with strong substance and great weather resistance. The arched standards are firmly held. The falls are broad and flaring. Gold Medal, Rome, Italy 1940. H. M., A. I. S. 1940. Per. R. 89 1941. 36 in. \$2.00

**REDWYNE** (McKee 1945) M. A deep mahogany red self that is outstanding in its color class. The medium sized flowers have an unusual velvety richness, and the solid color gives it great carrying qualities in the garden. H. C., A. I. S. 1944. H. M., A. I. S. 1945. Per. R. 89 1946. 36 in. \$7.50

**REMEMBRANCE** (D. Hall 1942) M. A soft pink blend with a suffusion of pale yellow throughout. The form, substance, and branching are good and it makes a lovely bit of color in the garden. H. M., A. I. S. 1943. A. M., A. I. S. 1944. Per. R. 88 1944. 38 in. \$2.00

**REVEILLE** (Tobie 1944) M. Delicate in color, but with firm substance, this pale pink has broad flaring flowers made more beautiful by the pinkish tangerine beard. It is a cross of Clovelly and Melitza and has taken the form from Clovelly and the beard from Melitza. Well branched stalks. H. M., A. I. S. 1945. R. 88 1945. 40 in. \$3.50

**RILLA GABBERT** (C. Carpenter 1946) M. Rarely will you see an iris that is so rich in jewel-like freshness and beauty as this rose and gold blend. It is half way between Daybreak and Prairie Sunset in garden effect and does not fade or lose its substance under most trying weather conditions. The standards of rosy henna are roundly domed and full; the falls are deeper rose, accentuated by gleaming henna toward the center of the flower. Wide low branching. H. M., A. I. S. 1946. R. 89 1946. 39 in. \$8.00

**ROCKET** (Whiting 1945) E. M. One of the most discussed iris of recent years. The standards are pure deep chrome, and the falls are orange chrome, shaded a bit lighter at the edge. The flowers are large, broad petaled and of firm substance. Strong well branched stalks. H. M., A. I. S. 1945. A. M., A. I. S. 1947. R. 90 1946. 38 in. \$15.00

**ROSE SPLENDOR** (Kleinsorge 1947) M. L. Coppery rose in color, this iris gives a deep pink effect in the garden. A self except for the deeper venations and bronzy flush on the hafts. Rich orange beard. Strong and sturdy stalks with good branching. H. M., A. I. S. 1948. 40 in. \$10.00

**RUBIENT** (Whiting 1942) M. This has been termed the "pansy iris" on account of the standards of pansy purple, and falls of deeper color bordered by the same tone as the standards. Per. R. 87 1946. \$1.50

**RUSSET WINGS** (J. Wills 1946) M. A heavy subtended flaring flower of smoothly blended gold, copper and apricot giving the effect of a glowing russet self. The standards are beautifully formed and firmly held, the falls are very flaring, delightfully ruffled at the edges. It is thoroughly hardy and vigorous, has very firm substance and great lasting qualities. Bright in color, the flowers glow and sparkle even on cloudy days. H. C., A. I. S. 1945. H. M., A. I. S. 1946. R. 90 1946. 38 in. \$7.50

**RUTH POLLOCK** (H. P. Sass 1939) M. Rose and yellow plicata that has some of the coloring of Tiffany, but is much brighter. Background of the flower is soft yellow with plicata markings of deep rose. H. M., A. I. S. 1939. A. M., A. I. S. 1941. Per. R. 90 1940. 36 in. \$ .50

**SABLE** (P. Cook 1938) M. An extremely dark blue purple flower with a lustrous silky sheen. The great depth of color is enhanced by the dark violet beard. H. M., A. I. S. 1937. A. M., A. I. S. 1940. Per. R. 90 1940. 36 in. \$1.00

**SALMONETTE** (J. Sass 1946) One of a series of newer pinks from the Sass Bros. garden. A light ochraceous salmon (Ridgway) self with a soft creamy flush around the tangerine beard that blends in so well into the ground color of the flower that it is not conspicuous. Medium sized blooms on well branched stalks. H. C., A. I. S. 1945. H. M., A. I. S. 1947. 36 in. \$10.00

**SAMOVAR** (D. Hall 1941) E. M. The color is coppery rose with standards lighter than the falls. It is very floriferous and makes a glowing mass of color. H. M., A. I. S. 1941. Per. R. 86 1943. 34 in. \$ .50

**SAN ANTONE** (Kleinsorge 1947) M. L. Imposing in size and form, this deep ruddy brown iris seems even more brown than most iris from this hybridizer. A deep tan or sand-brown self, imposing in size with very broad falls and ruffled form. The flowers are well spaced on tall well branched stalks. H. M., A. I. S. 1948. 40 in. \$10.00

**SEQUATCHIE** (W. Caldwell 1944) M. L. Following is the description of Sequatchie by a prominent A. I. S. judge: "All metallic coppery rose-brown, gleaming in the sun. The medium sized blooms had crisp, flaring form. A smooth infusion of violet, like the feathers on a pigeon's neck, centered the falls. A different blend with more metallic sheen than any iris I've ever seen. A honey." Strong very heavy substance with 9 to 11 flowers on four way perfectly branched stalks. H. C., A. I. S. 1943. H. M., A. I. S. 1944. Per. R. 88 1945. 41 in. \$4.50

**SERENATA** (Milliken 1943) M. A most attractive pink blend that has no yellow at the haft. The flowers are smooth and firm, and the color is most inviting. Vigorous and hardy, very good branching. R. 88 1945. 40 in. \$1.00

**SHARKSKIN** (G. Douglas 1942) M. If you can visualize the silken material known as Sharkskin you will have a good idea of the firm substance and almost velvety finish of this lovely tall white iris. The domed standards are very broad and have a strong midrib. The falls are arched and flaring with a pale yellow flush deep in the throat. The flowers are large and well proportioned to the ideally branched stalk. H. C., A. I. S. 1941. H. M., A. I. S. 1943. A. M., A. I. S. 1946. Per. R. 88 1946. 44 in. \$2.50

**SHISHALDIN** (DeForest 1944) L. Handsome flower of orange, yellow, and golden brown so skillfully blended that the whole effect is a brilliant deep golden orange. The flowers are flaring in form and well placed on strong sturdy stalks. Hardy and vigorous. R. 85 1946. 40 in. \$1.50

**SIERRA PRIMROSE** (Essig 1946) M. L. Sweetly scented, this creamy yellow with large well subtended flowers, is lovely for flower arrangement or in the garden. Fine low branching and vigorous growth, 36 in. \$4.00

**SILVER LUSTRE** (C. Carpenter 1942) M. L. Light Wistaria violet blue self with better form and substance than *Shining Waters*, and absolutely hardy. The standards are firmly domed. The falls are flaring. The flowers are beautifully formed with heavy substance withstanding rain, and hot sun. R. 89 1943. 40 in. \$2.00

**SKY RANGER** (D. Hall 1948) M. Tall and stately, this medium blue iris is well named for it does seem to range the sky. The flowers are large and heavily ruffled with the three way branching stalk so well proportioned that three blooms open at one time are not crowded. The tall stalks are strong and sturdy and do not blow down in heavy storms. 54 in. \$20.00

**SNOW CARNIVAL** (Graves 1942) M. A very large pure white with the ruffled finish of wind blown snow drifts. The fluted standards are domed and firmly held together. The very flaring falls are ruffled at the edge. Although the flowers are large they withstood a 48-hour wind without being whipped and battered. Three branches and terminal. H. C., A. I. S. 1941. H. M., A. I. S. 1942. A. M., A. I. S. 1944. Per. R. 90 1943. 39 in. \$3.00

**SNOW CRYSTAL** (J. Wills 1947) M. Snow Crystal is well named for its whiteness reminds one of glistening snow on a sunny wintry morning. It is the most lovely flower that I have ever seen on a white and blue plicata. Large in size with perfectly domed standards, and widely flaring falls, its great distinction lies in the striking contrast of the intense blue styles and crests with the pure whiteness of the standards and falls. The light feathering of blue at the hafts is void of any brown veining, so often found in a plicata. The branching is a little high, but I am sure it is an iris that will please you. Heavy textured flowers, and vigorous growth. H. C., A. I. S. 1945. H. M., A. I. S. 1947. 35 in. \$5.00

**SNOW DROP** (G. Douglas 1942) L. Late blooming white. The charm of this lovely flower is due to the perfection of the individual bloom and the purity of color. Beard white. Twelve blooms on each stalk. H. C., A. I. S. 1941. R. 87 1942. 26 in. Classed as a Border Iris. \$1.00

**SNOW FLURRY** (Rees 1939) E. Spectacular blue white. The very tall stalks have short side branches filled with many large ruffled blooms. The flowers have firm substance and great lasting qualities. H. M., A. I. S. 1939. A. M., A. I. S. 1941. Per. R. 89 1941. 40 in. \$1.25

**SNOW VELVET** (H. P. Sass 1942) M. A beautiful white with such heavy substance that the flowers withstand hot sun and winds. The standards and falls are slightly ruffled. The finish of the blooms is so thick and firm that the falls have a velvety texture which is most unusual in a white iris. H. M., A. I. S. 1942. Per. R. 88 1943. 40 in. \$1.50

**SOLID MAHOGANY** (J. Sass 1944) M. Deep reddish brown iris. According to Ridgway, the standards are Victoria lake, the falls are velvety burnt lake. The color effect is brownish mahogany, the substance heavy, branching very good. H. C., A. I. S. 1943. H. M., A. I. S. 1944. A. M., A. I. S. 1947. Per. R. 89 1945. 38 in. \$5.00

**SONG OF GOLD** (Essig 1937) M. Beautiful heavy subtended medium yellow with exceptionally fine form and branching. Lovely for any garden. H. M., A. I. S. 1939. Per. R. 88 1940. 38 in. \$ .75

**SONRISA** (DeForest 1942) M. L. A blend of coppery pink with a strong undertone of yellow. The flaring flowers have very firm substance with excellent placement on well branched sturdy stalks. H. M., A. I. S. 1945. Per. R. 87 1946. 38 in. \$2.50

**SORRELL TOP** (Mitchell 1943) A plicata in a new pattern with especially good branching. The standards are pale yellow heavily flushed brownish rose. The falls are white edged with the same rose coloring. H. M., A. I. S. 1947. 42 in. \$1.00

**SOUSUN** (Essig 1945) M. L. Some irises are flamboyant, but this fascinating one is just the opposite for it is a refreshing lemon cream with quality written all over it. A pale yellow laid over a shining ice-like background, its clean color distinguishes it from any other of the pale yellows. It is a welcome addition to a color class in which there are too few. Large flowers of firm texture, excellent branching. Hardy in New England. H. C., A. I. S. 1944. H. M., A. I. S. 1945. R. 89 1946. 40 in. \$3.50

**SPARKLING BLUE** (Grant 1942) E. M. L. This almost flax blue self sparkles as if dusted with frost crystals. The domed standards are broad. The semi-flaring falls are large. Heavy substance, superb branching. R. 88 1944. 41 in. \$1.50

**SPINDRIFT** (Loomis 1944) M. L. A self of pale pink with some venations on the falls, the crowning glory of the flower is the tangerine beard which lights up the whole flower in most brilliant contrast. The stalks are firm and the placement of the blooms is good. H. C., A. I. S. 1943. H. M., A. I. S. 1945. Per. R. 88 1946. 36 in. \$3.00

**STARDOM** (D. Hall 1941) M. A blended self of coppery pink and apricot buff with just enough yellow to bring out the beauty of the flowers. H. M., A. I. S. 1940. A. M., A. I. S. 1943. Per. R. 89 1940. 34 in. \$ .75

**STARLESS NIGHT** (J. Sass 1941) M. Very dark blackish purple self. The flowers are medium to large in size. An iris that is not too sombre for good garden effect as in the sunlight it is overcast with a reddish sheen. H. M., A. I. S. 1943. Per. R. 88 1943. 36 in. \$1.00

**STELLA POLARIS** (K. Smith 1939) M. A cool white with slight gold reticulations on the haft. The flowers are large, the sturdy stalks are 4 way branched. H. M., A. I. S. 1939. Per. R. 89 1940. 40 in. \$1.00

**STORM KING** (Nicholls 1940) M. L. A distinctive self of very blackish purple. The standards are well domed and firm. The broad falls are very flaring and of strong velvety substance with no venations on the haft. H. M., A. I. S. 1941. Per. R. 89 1942. 42 in. \$1.50

**ST. REGIS** (W. Caldwell 1947) M. An iris that might be termed an "aristocrat" in the very light blue class for it is quite different in form, carriage, and substance from any other in this group. The standards are roundly domed with crisp ruffling. The falls are very flaring with firm fluted borders. Charming and delicate in color, the flowers have balance and beauty to a marked degree. Well branched stalks. H. C., A. I. S. 1944. H. M., A. I. S. 1948. 38 in. \$11.00

**SUEZ** (Schreiner 1944) M. Suez is a large rounded flower of reddish purple with an unusual veined and spotted pattern inherited from its parents Wm. Mohr and Mme. Louis Aureau. R. 88 1946. 33 in. Classed as an Eupogocyclus Hybrid. \$5.00

**SUKEY OF SALEM** (Nesmith 1946) L. Named for a famous ship that sailed from New England, this iris is as strong and sturdy as that old time bark. A blended self of Ocher-red and rose with a Kaiser brown flush on the upper part of the falls (Ridgway). Not a dull iris for it is brimming with bright blended colors so cleverly intermingled that it is difficult to describe. The flowers are very broad and full, of flaring form and extremely heavy substance. Growth vigorous. H. C., A. I. S. 1945. H. M., A. I. S. 1946. R. 88 1946. 38 in. \$6.50

**SULTAN'S ROBE** (Salbach 1945) M. This iris is a great favorite on the Pacific coast. The standards are between Vandyke red and deep old rose. The broad heavy subtended flaring falls are of the same color except there is a pronounced overlay of gold on the upper half and a bright dash of blue violet in the center of the falls. H.M., A.I.S. 1946. R. 89 1946. 36 in. \$5.00

**SUNDANCE** (Nesmith 1940) L. Rich blend of golden tan and reddish mahogany. The broad standards are deep tan, the rounded flaring falls are the same golden tan with a rich red area in the center. Extremely heavy substance, tall sturdy stalks. H. M., A. I. S. 1940. Per. R. 88 1941. 40 in. \$1.00

**SUNSHINE** (D. Hall 1945) M. Deep rich yellow with good form and substance. The flowers are carried on strong well branched stalks. Hardy, and a good performer. 35 in. \$1.50

**SUZETTE** (Knowlton 1945) M. Usually plicatas have very little garden value for at a distance they seem a beclouded mass of color. Not only is Suzette lovely as a specimen stalk, but when viewed from afar gives the effect of a creamy yellow with wonderful garden value. The flowers are lightly dotted with maroon at the edges of the standards and falls near the throat, and the distinctive feature of the rosy madder brown styles serves to bring out the creaminess of the bloom. The flowers are large of firm substance. Its form, branching and other characteristics are nearly perfect. The enthusiastic praise of this iris in A. I. S. bulletins is well merited. H. C., A. I. S. 1944. H. M., A. I. S. 1945. R. 89 1946. 40 in. \$9.00

**SYLVAN BELLE** (Peck 1944) M. Tall and well formed this warm white is the outstanding iris in the garden of Mr. Peck. A seedling of Glorioso, it has firm domed standards and semi-flaring falls with slight golden reticulations at the hafts which lend a glow to the whole flower. Hardy and a prolific grower. H. M., A. I. S. 1948. R. 88 1945. 40 in. \$4.50

**SYRINGA** (Lowry 1947) M. Mrs. Lowry chose the name Syringa for this lovely iris as being most appropriate, for it has been likened in color to the freshly opened blooms of the old fashioned lilac, botanically known as Syringa Vulgaris. A clean, pure lilac self with closed cupped standards, and broad semi-flaring falls. The substance is firm, and the strong stalks are very graceful and especially well branched. The fragrance, and subtle coloring give this iris great individuality and charm. Thoroughly hardy, and a prolific bloomer. H. C., A. I. S. 1946. H. M., A. I. S. 1947. R. 88 1946. 40 in. \$7.00

**SYLVIA MURRAY** (Norton 1944) A very fine blue from Great Lakes and Shining Waters. The flowers are clear and pure in color with precise styling, frosty firm texture, and heavy substance. Luxuriant growth, and tall well branched bloom stalks. H. M., A. I. S. 1946. 40 in. \$3.00

**THE ADMIRAL** (D. Hall 1941) M. A clean bright medium blue. The flowers have good substance and withstand hot sun and rain to a marked degree. Strong well branched stalks. H. M., A. I. S. 1940. A. M., A. I. S. 1944. Per. R. 88 1943. 37 in. \$1.00

**THE BISHOP** (Washington 1937) M. A smoothly finished long flower of intense Bishop's purple. The standards are large and well domed, the large falls are slightly flaring, and of very firm substance and texture. H. M., A. I. S. 1938. Per. R. 87 1939. 38 in. \$ .75

**THE FRANCISCAN** (Essig 1947) M. So named because its deep colors are remindful of the robes of the Franciscan Friars. It is the best dark iris from a line of breeding carried on by Prof. Essig for nearly twenty years, and it is a fitting climax, for seldom do we find a deeply colored iris with such **flaring** form. A dark purple self, flushed with iridescent tones of maroon purple around the bronzy gold beard. The standards are very domed and firm, and appear slightly lighter than the falls, due to the finish of the extremely flaring falls. The stalks are sturdy with three to four very well spaced branches. 36 in. \$10.00

**THE GUARDSMAN** (Grant 1939) E. M. A handsome iris with standards of dusty pink. The undercolor of the semi-flaring falls is slightly deeper than the standards with a velvety overlay of mulberry edged with the dusty pink of the standards. Good substance. H. M., A. I. S. 1940. R. 88 1942. 38 in. \$2.00

**THE ORIOLE** (Schreiner 1947) M. L. The vivid contrast of the standards and falls is most startling and unusual, yet very fascinating. The standards are goldenrod yellow, the falls rich black-maroon, so dark that the flower looks like a piece of gold and black velvet. 36 in. \$2.00

**THE SENTINEL** (D. Hall 1942) M. This iris is very attractive. A bright burnished copper with flowers of good form and substance. Per. R. 86 1944. 35 in. \$ .75

**THREE CHEERS** (Cook 1945) M. Bold flaring flowers with pallid violet standards and flaring falls of dark violet. A seedling of Wabash with great height and vigorous growth. H. M., A. I. S. 1946. 42 in. \$6.00

**THREE SISTERS** (De Forest 1941) L. The standards are light cream with rounded flaring falls of Indian lake. An arresting combination of color giving the effect of a red and white amoena. Per. R. 85 1944. 35 in. \$1.00

**TIFFANJA** (DeForest 1942) M. A clean cut flower that commands attention on account of its large flowers and almost perfect branching. The standards are buff, firm and well held, the falls are creamy white bordered buff and brushed at the haft and around the edge with golden brown. A very fine plicata. H. M., A. I. S. 1944. A. M., A. I. S. 1946. Per. R. 88 1945. 40 in. \$1.50

**TIP TOP** (D. Hall 1947) M. Striking and quite different this plicata gives the effect of a reverse bicolor. The standards are solid violet blue, well domed. The falls are white save for a very light peppering of blue in the throat and edges. Crisp flowers, and good branching. 30 in. \$7.50

**TISHOMINGO** (W. Caldwell 1942) M. L. Large Wistaria blue self of very flaring form and firmest substance. The standards are highly and roundly domed. The falls are flaring with lighter flush around the beard. A frosty flush envelops the whole flower and accentuates the cool crispness of this beautiful sturdy iris. H. M., A. I. S. 1942. A. M., A. I. S. 1944. Per. R. 90 1943. 42 in. \$1.50

- TITIAN LADY** (G. Douglas 1941) M. L. Pure white with roundly domed standards and semi-flaring falls. The distinctive feature of this flower is the intense tangerine beard that lights up the center of the flower. Well branched. H. M., A. I. S. 1941. Per. R. 88 1941. 40 in. \$1.00
- TOBACCO ROAD** (Kleinsorge 1942) M. L. A very distinctive iris of rich tobacco brown. The flower is compact and firm with heavy substance and trim flaring form. An iris that has exceptionally rich glowing tones. Strong sturdy stalks. H. M., A. I. S. 1944. A. M., A. I. S. 1946. Per. R. 89 1945. 34 in. \$5.00
- TOURNAMENT** (J. Wills 1948) L. This large, luminous, and very late flowering iris is one of the best in the rose-purple class. Really more rose than purple, its color carries to a great distance in the garden. A very large round flower with broad well domed standards, and wide semi-flaring falls. It resembles Monadnock in color (one of its parents), but it is brighter, smoother, and larger, enriched by the almost velvety brown overlay on the hafts, this is in sharp contrast to the bright yellow beard. The branching is a bit high, but the flowers are well spaced with plenty of buds to give profusion of bloom, and the luxuriant foliage comes up well around the very strong sturdy stalks. Well subtended colorful flowers. A great addition in prolonging the season of bloom. H. M., A. I. S. 1948. 42 in. \$10.00
- TREASURE TROVE** (Sturtevant 1940) L. A charming Table Iris in Naranja coloring. Floriferous, vigorous, and with good substance, this variety is lovely for flower arrangement or border planting. A gem in color harmony. 24 in. Classed as a Border Iris. \$ .50
- TRIPTYCH** (Wareham 1939) M. L. Large rich yellow of fine substance and form. The lemon chrome standards are very large and perfectly domed. The falls are beautifully arched and very flaring. An impressive yellow with smooth firm substance, and tall well branched stalks. H. M., A. I. S. 1938. Per R. 86 1941. 39 in. \$1.00
- TWILIGHT SKY** (Fay 1948) Mr. Fay considers this the best pink iris he has introduced. The medium sized flowers are well tailored with clean hafts and flaring form. The red beard is in sharp contrast to the clear pink of the flower. The widely spaced flowers are carried on strong well branched stalks. Hardy, and increases rapidly. 35 in. \$15.00
- VIGIL** (J. Wills 1947) E. M. L. Snowy white in effect, this iris has a very long season of bloom, commencing with the early bloomers, extending through mid-season and finishing with the late flowering varieties. A very pure white with large blooms of smooth firm texture, the clean hafts are devoid of any markings. The standards are domed and refined in form, the falls are broad and semi-flaring with slight ruffling at the edges. An iris that will appeal to iris lovers, not only for its purity of color, but for its form and lasting qualities. The branching is wide, the stalks strong, it is hardy, a dependable bloomer. H. C., A. I. S. 1946. H. M., A. I. S. 1947. 38 in. \$7.50
- VIOLET SYMPHONY** (K. Smith 1940) M. Gleaming Bradley's violet self that has an especially finished appearance due to the absence of venations. Broad standards and wide falls. The flowers have a subtle exotic touch such as we find in *Oncocyclus* hybrids. H. M., A. I. S. 1940. A. M., A. I. S. 1943. R. 88 1946. 40 in. \$1.00
- VIRGIN** (Washington 1938) M. The large standards have a white background suffused with pale cream. The falls are large and semi-flaring of white, edged with a distinct lemon yellow band. R. 88 1938. 40 in. \$1.00
- VISION FUGITIVE** (Wareham 1942) M. L. A large cool white and yellow with an intangible quality of grace throughout. The domed standards are cream yellow. The details of the falls are most intriguing; the broad white surface is faintly shadowed light blue with a tracery of yellow at the rim. The substance of the flowers is firm with the bloom stalks very well branched. This iris withstood three days of wind and rain better than most iris in the garden. H. M., A. I. S. 1945. R. 89 1945. 39 in. \$4.00
- WABASH** (Williamson 1937) M. The standards are pure white, delightfully ruffled at the edge. The flaring falls are deep hyacinth violet margined white. H. M., A. I. S. 1937. A. M., A. I. S. 1938. Dykes Medal 1940. Per R. 90 1938. 39 in. \$ .75
- WAKARUSA** (Lapham 1941) M. A medley of color, with burnt orange, copper, and red so blended that it cannot be adequately described. Very floriferous of medium height one could not ask for a more colorful iris in the garden. H. M., A. I. S. 1941. Per. R. 88 1942. 35 in. \$1.00
- WHITE BUTTERFLY** (Washington 1938) M. Charming pure white with ruffled standards and falls. Perfect in form and substance with low branching. 39 in. \$1.00
- WHITE GODDESS** (Nesmith 1936) M. Very large well domed standards of pure white, the falls are extremely arched and flaring and are also pure white. The large flowers are glistening white and are borne on tall sturdy stalks. H. M., A. I. S. 1936. Per. R. 90 1939. 40 in. \$ .75
- WHITE RUSSIA** (Tobie 1947). M. This handsome white carries its blooms on about as ideally spaced and proportioned stalk as can be desired, often with three flowers open at one time, in perfect placement, and giving a cascade effect up and down the sturdy stalk. The rounded flowers are a warm white with a golden flush surrounding the rich yellow beard. The ruffled standards and widely spreading falls are crisp and firm in substance. A cross of Easter Morn x Nobility, it combines the hardness of Nobility and the flaring form of Easter Morn. Sweetly scented, and of vigorous growth, it promises to displace Easter Morn for garden planting. H. C., A. I. S. 1946. R. 88 1946. 40 in. \$7.50
- WHITE WEDGEWOOD** (Grant 1943) E. M. When the flower first opens it is a very light blue white that soon changes to pure white save for a slight blue flush at the haft. The flowers have very strong substance with closed standards, and semi-horizontal falls. The purity of the flower is in sharp contrast to the blue beard. Sturdy well branched stalks. H. M., A. I. S. 1943. A. M., A. I. S. 1945. Per. R. 88 1946. 38 in. \$3.50
- WINSTON CHURCHILL** (W. R. Stevens 1946) M. L. Glowing and alive with color, this striking red from New Zealand won high praise from those that saw it in the garden last year. The standards are copper-red in pleasing contrast to the dark crimson falls. Impressive and distinctive in color. 32 in. \$10.00
- WINTER CARNIVAL** (Schreiner 1941) M. A very flaring rounded white of large size with a flush of gold in the center. H. M., A. I. S. 1942. 36 in. \$1.00
- WORTHINGTON** (P. Cook 1943) M. Harmonious bicolor of pleasing rosy red, the flowers are clear and bright. Smooth textured with heavy substance. The plant is vigorous and a reliable bloomer. R. 88 1946. 36 in. \$2.00
- YOUTH'S DREAM** (C. Carpenter 1940) M. Standards are rosy red with a strong flush of gold. Falls are velvety rose. Well branched, very brilliant in the garden. Per. R. 86 1941. 38 in. \$ .50
- YUMA** (Mitchell 1945) M. A plicata from the Mitchell group that is quite different in color and pattern. The yellow ground is heavily stippled dark red, purple and brown. The standards are lighter than the falls with the markings more diffused. Tall well branched stalks. 42 in. \$1.50
- ZANTHA** (Fay 1947) E. M. Clear and clean, this deep yellow self is most outstanding in the garden. Large beautifully formed flowers with strong, broadly domed standards, and semi-flaring velvety falls. Heavy subtended flowers on tall especially well branched stalks. Winner of the Presidents cup at the 1947 National Meeting of the A. I. S. H. C., A. I. S. 1946. H. M., A. I. S. 1947. 38 in. \$10.00

## One Hundred Best Iris for 1949

I have given this list great care and thought, and have observed these irises in many parts of the country as well as in my own garden. No varieties are in this list that have not been tested thoroughly in my garden.

### WHITE

ADMIRAL NIMITZ  
LADY BOSCAWEN  
MOUNT HERMON  
NEW SNOW  
SHARKSKIN  
VIGIL  
SNOW CARNIVAL  
WHITE RUSSIA  
WHITE WEDGEWOOD  
PRISCILLA

### CREAM & PALE YELLOW

AMANDINE  
DESERT MOON  
DESERT SONG  
EASTER CANDLE  
GOLDEN EPAULETS  
LADY LOUISE  
SOUSUN  
VISION FUGITIVE

### YELLOW

BERKELEY GOLD  
MOONTIDE  
FRANCELIA  
GOLDBEATER  
GREIG LAPHAM  
PENN CHARTER  
JASMINE  
MIMOSA GOLD  
OLA KALA  
ZANTHA

### ORANGE, TAN, BROWN

CHAMOIS  
CORDOVAN  
GOOD NEWS  
ROCKET  
RUSSET WINGS

### ONCO HYBRIDS

ELMOHR  
LADY MOHR

### LIGHT PINK & PINK EFFECT

AZALEA  
BARBARA LUDDY  
CHANTILLY  
CHERIE  
EXQUISITE  
FANTASY  
RADIATION  
PAGAN PRINCESS  
PINK CAMEO  
PINK REFLECTION  
SPINDRIFT  
PREMIER PEACH

### LIGHT BLUE & BLUE LAVENDER

AZURE SKIES  
BLUE RYTHM  
BLUE VALLEY  
CHIVALRY  
CLOUD CASTLE  
GREAT LAKES  
HELEN MCGREGOR  
BLUE FRILLS  
ST. REGIS  
SLVIA MURRAY  
SYRINGA  
TISHOMINGO

### DEEP BLUE, VIOLET & MAUVE

BARBARA ADAMS  
BLACK BANNER  
BLACK FOREST  
DANUBE WAVES  
ESQUIRE  
GULF STREAM  
MASTER CHARLES  
NIGHTFALL  
PENSIVE  
THE ADMIRAL

### VARIEGATA BLENDS

GYPSY  
MARY VERNON  
MEXICO  
ORANGE GLOW

### DEEP ROSE & PINK

DREAM CASTLE  
MULBERRY ROSE  
TOURNAMENT

### RED & RED EFFECT

DRUM MAJOR  
GARDEN GLORY  
COLOR SERGEANT  
RED TORCH  
RED MAJESTY  
SOLID MAHOGANY

### PLICATA

MINNIE COLQUITT  
SNOW CRYSTAL  
SUZETTE  
TIFFANJA

### AMOENA, NEGLECTA

AMIGO  
EXTRAVAGANZA  
WABASH

### BLENDS

CAROUSEL  
BRYCE CANYON  
RILLA GABBERT  
CASCADE SPLENDOR  
MARY ELLEN  
MIOGEM  
BRONZE BROCADE  
PRAIRIE SUNSET  
RAINBOW ROOM  
SEQUATCHIE  
SUKEY OF SALEM



## Special List of Well Known Bearded Iris

The Following Varieties are 50c each—3 of 1 variety \$1.25

BELLE OF DIXIE—Rich blend. 38 in.  
 BIRCHBARK—Very pure white. 34 in.  
 BUCCANEER—Variegata blend. 40 in.  
 CARVED IVORY—Creamy white. 38 in.  
 CLARET VELVET—Red self. 36 in.  
 COPPER FRILLS—Coppery gold. 36 in.  
 EASTER MORN—Large white. 40 in.  
 FLORA CAMPBELL—Warm red blend. 36 in.

GLORIOLE—Palest blue. 38 in.  
 GOLDEN AMBER—Amber and gold. 34 in.  
 GOLDEN TREASURE—Cream and gold. 38 in.  
 NED LEFERVE—Lovely rose blend. 38 in.  
 NOBILITY—Very tall white. 42 in.  
 NOONDAY SKY—Light blue. 38 in.  
 NORTH STAR—Large pure white. 38 in.  
 PALE MOONLIGHT—Tall pale blue. 42 in.

PERSAN—Fine French red. 35 in.  
 PEGGY WALLACE—Pink flushed buff. 35 in.  
 RHAPSODY—Peacock blend. 37 in.  
 SAMOVAR—Coppery blend. 34 in.  
 SPRING PROM—Tall yellow blend. 38 in.  
 THELMA JEAN—Clear claret red. 36 in.  
 TREASURE TROVE—Copper. Border iris. 24 in.  
 YELLOW TOM TIT—Border iris. 20 in.

### OLDER BEARDED IRIS

The following varieties are 35c each 3 of 1 variety 85c.

ALINE—Pale blue. 38 in.  
 AUTUMN ELF—Lavender. Fall bloomer. 30 in.  
 CADETOU—Red and yellow. 36 in.  
 CALLING ME—Pale blue. 36 in.  
 CHINA CLIPPER—Creamy yellow. 38 in.  
 DOXA—Yellow. Border iris. 18 in.  
 DYMIA—Deep purple. 34 in.  
 EXCLUSIVE—Light periwinkle blue. 38 in.

GAY DAWN—Pink and yellow blend. 37 in.  
 GUDRUN—Large white. 34 in.  
 INDIAN HILLS—Glowing red purple. 38 in.  
 KALINGA—Creamy yellow. 40 in.  
 LUTETIA—White flushed cream. 38 in.  
 MARVELOUS—Brilliant variegata. 36 in.  
 NARAIN—Deep blue. 35 in.  
 NEOS—Pink blend. Border iris. 22 in.

RED ORCHID—Rich red. Border iris. 15 in.  
 SIERRA BLUE—Tall nice blue. 40 in.  
 SNOW MAIDEN—Pure white. Border iris. 15 in.  
 SOUTHERN GLOW—Blue and cream. 38 in.  
 SUNDOWN—Glowing pink and yellow blend. 38 in.  
 SUNGLEAM—Pale yellow. 38 in.  
 UNIQUE—Cream and pink blend. 34 in.  
 WITCHING HOUR—Lovely soft yellow. 40 in.

ONLY ONE OF A VARIETY *Collections* ALL PRICES ARE NET

## BEARDED IRIS

### AWARD OF MERIT COLLECTION

10 Iris for \$30.00

All of these iris have received A. M. from the A. I. S.

#### Select 3

CAROLINE BURR  
 BROWN THRASHER  
 DEEP VELVET  
 BERKELEY GOLD  
 RED GLEAM  
 PRISCILLA  
 COPPER ROSE  
 TIFFANJA  
 CAPTAIN WELLS

#### Select 4

AZURE SKIES  
 SHARKSKIN  
 MARY VERNON  
 MASTER CHARLES  
 SNOW CARNIVAL  
 RANGER  
 PINK REFLECTION  
 WHITE WEDGEWOOD

#### Select 3

LADY MOHR  
 SOLID MAHOGANY  
 CASCADE SPLENDOR  
 CHAMOIS  
 LADY BOSCAWEN  
 EXTRAVAGANZA  
 BLUE RYTHM

If you will pay express charges we will send an extra of Lady Mohr.

### HONORABLE MENTION COLLECTION

10 Iris for \$40.00

All of these iris have received H. M. from the A. I. S.

#### Select 4

LOTHARIO  
 VISION FUGITIVE  
 CLOUD CASTLE  
 FRANCONIA  
 GOLDBEATER  
 ETOILE D'OR  
 SYLVIA MURRAY  
 SOUSUN

#### Select 3

MOUNT HERMON  
 BLACK BANNER  
 BLUE GLOW  
 SNOW CRYSTAL  
 CARILLON  
 SEQUATCHIE

#### Select 3

JASMINE  
 RED TORCH  
 SUKEY OF SALEM  
 ALPINE GLOW  
 VIGIL  
 COPPER GLOW

If you will pay express charges we will send extra Sousun or Blue Glow.

### NOVELTY COLLECTION

6 Iris for \$50.00 or whole collection for \$75.00

ST. REGIS  
 BARBARA LUDDY  
 DRUM MAJOR  
 RED MAJESTY  
 MIMOSA GOLD  
 PENSIVE  
 SUZETTE  
 LAKE SHANNON  
 HELEN MCGREGOR  
 CHANTILLY  
 RILLA GABBERT

If you will pay express charges we will send extra Sharkskin.

FOR  
 HEMEROCALLIS  
 COLLECTIONS  
 SEE PAGE  
 THIRTY

### BEGINNERS COLLECTION

10 Iris for \$7.50

#### Select 3

PRAIRIE SUNSET  
 WABASH  
 MELITZA  
 CHINA MAID  
 STARDOM  
 AMIGO  
 GOLDEN SPANGLE  
 PICOTEE  
 MEDITERRANEE

#### Select 4

SABLE  
 FLORA ZENOR  
 COMRADE  
 THE ADMIRAL  
 SERENATA  
 SUNDANCE  
 ELMOHR  
 GREAT LAKES  
 STELLA POLARIS

#### Select 3

CAROLINE BURR  
 DIVIDEND  
 FLAMELY  
 DISPLAY  
 HOOSIER SUNRISE  
 LAVENDER MIST  
 SNOW VELVET

If you will pay express charges we will send an extra of Tiffanja.

## Siberian Iris

**AHALYA** (Nesmith 1932) A beautiful and dainty Siberian of distinctly pink tone. 38 in. **\$3.00**

**BLUE CHARM** (Sass 1932) Beautiful large flowers of clear light blue. Lovely for flower arrangement. 36 in. **\$1.00**

**BLUE RIDGE** (Clev. 1927) Flaring flower of clear blue with turquoise center; fringed stigmas; exquisite. **\$1.00**

**BLUE STAR** (Clev. 1927) Star shaped flower; deep blue. **\$1.00**

**CAESAR** (Morg. 1930) Dark blue-purple; large flowers. **\$1.00**

**CAESAR'S BROTHER** (Morg. 1932) The darkest and best Siberian; black pansy-purple; tall and late blooming. H. M. A. I. S. 1936 R. 91. **\$1.00**

**COOL SPRING** (W. L. Kellogg 1940) A charming Siberian with many flowers on widely branched stalks. The standards and styles are pearly blue. The very horizontal falls are much deeper on the upper part, blending out to the pearly blue of the standards. 30 in. **\$2.50**

**EMPEROR**—Large deep violet. 40 in. **\$.75**

**ERIC THE RED** (Whitney 1944) This brilliant red is truly an iris to attract the eye for it is the finest, most distinctive Siberian that has been produced. The flowers are extremely large with broad flaring falls of intense wine red. The standards are large and of the same glowing red. Many, many flowers on tall well branched stalks. H. C., A. I. S. 1943. H. M., A. I. S. 1944. A. M., A. I. S. 1946. R. 90 1944. 42 in. **\$7.00**

**FLORRIE RIDDLER**—Large blue. 40 in. **\$.75**

**GATINEAU** (Preston 1932) A wonderful clear blue iris with extremely large flowers on tall, sturdy stems; outstanding. R. 94. 1936. **\$1.00**

**HELEN ASTOR** (Whitney-Kellogg 1938) A very lovely and distinctive variety. S. are wide and slightly fluted on the edge. F. are broad and round of rosy red with a white halo near the throat which is flushed with blue. H. M., A. I. S. 1941. A. M., A. I. S. 1942. 30 in. **\$3.00**

**KENOGAMI** (Preston 1938) A striking dark blue of tall and stately habit. A great addition to the garden. 40 in. **\$2.00**

**LLEWELLYN** (Cleveland 1929) Large flaring flowers of rich blue purple. Tall and upstanding. **\$1.00**

**MADAWASKA** (Preston 1932) Medium blue. 38 in. **\$1.00**

**MILDRED STAHLMAN** (Washington 1931) Pale china blue flowers of large size with horizontal falls; charming. **\$1.50**

**MOONSPRITE** (Jennings 1937) A silvery mauve overcast with lilac-pink. The tall graceful flowering stalks often carry ten blooms to a stalk, thus giving it a long flowering season. **\$2.00**

**MOUNTAIN LAKE** (Gersdorff 1938) A delightful clear medium blue self with semi-erect standards and flaring falls which are slightly ruffled at the edge. The center of the flower and styles are lighter blue. The flower has a crisp, cool appearance that is most effective in the garden. H. M., A. I. S. 1942. A. M., A. I. S. 1944. R. 88 1941. 36 in. **\$3.00**

**MOUNTAIN POOL** (Clev. 1932) Beautiful clear sky blue with full smoothly finished flowers, exceptionally good. **\$1.00**

**NIGHT SPRITE** (Gersdorff 1939) A very attractive flower with erect light blue violet standards flushed deeper in the center. The semi-flaring falls are bluish violet shaded very bright blue around the small white halo. The flowers give a decided bicolor effect and a clump is most outstanding in the garden. 36 in. Withdrawn to increase stock. **\$3.00**

**OTTAWA** (Preston 1938) A very distinctive iris with bright blue standards and falls in sharp but pleasing contrast to the white center of the flower. A. M., R. H. S. 1928. 36 in. **\$1.50**

**PEMBINA** (Preston 1937) A profusely blooming variety of medium blue with strong vigorous growth. **\$1.00**

**PERIWINKLE** (Clev. 1929). One of the best purples **\$1.00**

**PICKANOCK** (Preston 1937) Similar in shape to the famous Gatineau, but of deep violet blue with a decided white area in center of the falls. Excellent form and habit. 40 in. **\$1.50**

**RED EMPEROR** (Sturt. 1924) Wine red, veined blue. **\$1.00**

**RIMOUSKI** (Preston 1937) The white standards are flushed yellow at the base. The falls are white with yellow halo and yellow line down the center of the falls. 30 in. **\$1.50**

**SNOWCREST** (Gage 1932) Tall white; large perfect flowers. H. M., A. I. S. 1936. **\$1.00**

**TROPIC NIGHT** (Morgan 1937) A new Siberian which surpasses Caesar and Caesar's Brother in beauty, form and color. **\$3.50**

**TYCOON** (Clev. 1938) The largest Siberian iris to date. The huge flowers of violet blue are of splendid proportion and are outstanding in the garden. **\$3.00**

**ZEST** (Sturt. 1934) A brilliant iridescent blue with deep lavender pink style branches. It has great garden value. **\$1.00**

## *Apogon Irises*

### Louisiana Iris and Washington Hybrids

This group includes new and rare Louisiana irises, and hybrids produced by Mr. T. A. Washington of Nashville, Tennessee. The Louisiana varieties are mostly collected plants, and I have tried to credit these to the persons that registered them with the A. I. S. These bloom after the bearded irises and are a great addition to any garden. They are especially recommended for pool edge and half shady places in the garden. All of these have been tested for hardiness in New England.

**ABBEVILLE REDS** These are collected plants, and are in varying shades of red. I am fascinated by their unique form and great beauty. The styles are roundly curved and resemble a quill with the stamen peeping out from the center. Most of the flowers have recurving petals and sepals that show the "quilled" styles to great advantage. The blooms are handsome. Tall with good branching. **\$2.00**

**CATHEDRAL BLUE** (Dorman C. 1945). These flowers combine the beautiful blue tones found in old cathedral windows. Velvety finished six inch blooms with bright yellow crests on the petals. 20 in. **\$3.00**

**CAJAN JOYEUSE** (Thomas Geo. 1943) The large flowers open deep brilliant rose, gradually lightening to bright rose pink. It blooms very freely over a period of several weeks. One of the brightest. 30 in. **\$3.00**

**CARDINALIS** (McMillan 1943) Very firm flowers of brilliant cardinal-scarlet opening out almost flat with long narrow yellow crests. The flowers are large and are borne on gracefully curving stems. One of the most floriferous of this class of iris. 36 in. An Abbeville Red. **\$3.00**

**CAROLINE DORMAN** (R. Dorman 1943) An uncontrolled hybrid from seeds grown by Mrs. Ruth Dorman. The heart of both sepals and petals is pale yellow, shading out to soft Rose red at the edges and tips. A delightful iris that is arresting in its beauty. 38 in. **\$5.00**

**DAVID FISCHER** (Fischer N. 1943) Beautiful blending of white and orchid on flat seven inch flowers. A bright yellow crest on the petals outlined by grape juice color adds to the unusual bloom. 36 in. **\$4.00**

**ELIZABETH WASHINGTON** (Washington 1931) Velvety bright blue; small yellow signal; slightly cupped flower of good size. H. M., A. I. S. 1933. 30 in. **\$3.00**

**FAIRY CHALICE** (Dorman R. 1944) A charming bicolor with cream petals, and amaranth sepals. The six inch flowers are of lovely chalice form. 38 in. **\$10.00**

**JEUNE FILLE** (Debaillon 1943). The frilled white flowers suggest a young girl in a ruffled organdy dress. The broad sepals are recurved and have firm substance. Charming flower of outstanding beauty. 40 in. **\$3.00**

**KRAEMER TAN** (Kraemer) A most unusual color and quite difficult to describe. A flaring flower with a yellow background overlaid with pigmentation of tan, the effect being a soft ivory-tan. The blooms have firm texture and the stalks are tall. A rare and lovely blend. 40 in. **\$4.00**

**MAGNOLIA PETAL** (Debaillon 1943) This delightful iris is well named for its large flowers of deep cream gradually shading out to white have the heavy firm substance of a magnolia bloom. It has very fine form. 30 in. **\$3.50**

**MARTHA WASHINGTON** (Washington 1931) The color is a rich velvety old rose, deepened by a slight brownish tone, the whole effect being a glorious deep red. H. M., A. I. S. 1930. **\$3.00**

**MARY LOVE** (Washington 1931) Pinkish lavender flowers of orchid shade; wonderful color and form. **\$3.00**

**MARY S. DEBAILLON** (Debaillon 1942) Collected by the late Mrs. Dan Debaillon and named for her because it was her favorite iris. It resembles a tremendous orchid with sepals (standards) of Lavender rose, and petals (falls) of Orchid pink with broad yellow signal. A stalk with three flowers open at one time is a thrilling sight. 36 in. **\$4.00**

**RUTH MARSALIS** (Debaillon-Dorman 1943). Very large flowers on tall stalks; a lovely unique shade of soft blue with long clear cut light crest. 40 in. **\$4.00**

**WENA GOODALL** (Washington 1932) White heavily veined with rose giving a color effect of deep rose; very lovely. 40 in. **\$3.00**

## Evansia and Vernal Iris

**CRISTATA, BLUE.** Sky blue flowers. 3 in. \$1.00

**CRISTATA, WHITE.** Creamy white; rare. 4 in. \$1.00

**CRESTED FAIRY** (Henry 1945) M. This very attractive iris is a typical *cristata* except in color. When the flowers first open the standards are palest lavender, soon paling out to white. The falls are rather of a deep blue. A lovely little bicolor that has been much admired. 3 in. \$2.50

**CRESTED GEM** (Henry 1948) From Alabama this tiny variety of *Cristata* is most appealing. An exquisite flower of palest China blue, delicately etched with a deeper blue on white around the yellow crest. The slender tube is golden yellow, and the flower is fragrant. It is amazingly floriferous and thrives in full sun or part shade. \$5.00

**CRESTED IVORY** (Henry 1948) This dainty form of iris *Cristata* has milk white flowers with a crest of palest yellow, that is scarcely perceptible. It is a refined bloom of great charm. \$2.50

**TECTORUM, BLUE** Lavender blue flowers. 8 in. \$ .75

**TECTORUM, WHITE** Exquisite white; crests are marked with gold. \$1.50

**VERNAL DAWN** (Henry 1941) M. A form of iris *Verna* with flowers of palest pinky lavender. The orange crests on the falls are so intense that the flower seems as if it were a glowing opal. A gem for border or rock garden. 5 in. \$4.00

**VERNAL EVENING** (Henry 1945) M. Another flawless little gem. The deep lavender flowers have a blotch of dark purple velvet beneath the conspicuous orange crest. The foliage is green stained with purple. 4 in. \$5.00

**VERNAL FAIRY** (Henry 1945) E. M. A most enchanting and showy little iris. The white standards are heavily clouded over with lavender. The white falls have brilliant orange crests. It is a most beautiful and distinctive reverse bicolored form of *Verna*. 4 in. \$5.00

**VERNAL NIGHT** (Henry 1947) E. This charming little iris is by far the darkest and richest in color of this group of fascinating iris. According to Ridgway, the standards are Bradley's violet, and the flaring falls are Dark violet. The general effect is Royal purple, and the striking orange crests are very rich and brilliant. A handsome and unusual bit of color for the rock garden. 4 in. \$5.00

**VERNAL SIMPLICITY** (Henry 1945) E. M. A fitting name for this delightful little lavender self for it is without even a touch of orange or yellow in the crests. Cool and refreshing it is especially nice for those wishing to keep to a lavender color scheme. 4 in. \$4.00

**VERNAL SNOW** (Henry 1941) M. The blooms are pure white, and the vivid contrast of the fiery orange crests on the falls accentuates the purity and perfection of the flowers. A delightful miniature iris. A form of iris *Verna* and especially adapted to border or rock garden. 5 in. \$4.00

## Spuria Iris

This beardless group is not well known, but really contains some of the most attractive, delicate flowered irises of the genus. Most of them bloom after the peonies have passed and are a great addition to the garden.

**AZURE DAWN** (Nies) A blue lavender flower of uniform color except for a pale yellow patch on the falls. 50 in. \$3.00

**BATHSHEBA** (Washington 1936) Medium sized flower of white and yellow, flaring falls and deep yellow signal. \$3.00

**BEN LOMOND** (Washington 1935) S. are electric blue and semi-flaring; F. of more brilliant blue with white venations around narrow yellow signal; tall and lovely. 48 in. \$3.00

**BLUE ACRES** (Mrs. T. A. Washington 1948) L. Full broad petaled blooms of palest Windsor blue (Ridgway). In effect it is a self with large cupped standards and almost horizontal falls. An exquisite shade of blue with a frosty silvery lustre on the heavily substanced petals. Dainty and charming. Strong clean foliage. 45 in. \$10.00

**BLUE ROCKET** (Mrs. T. A. Washington 1947) L. Mrs. Washington is doing exceptionally good work in creating new and lovely Spuria iris, and this one is the best clear dark blue that I have seen. A self with arched and firmly held standards, the falls are broad and flaring with crisp fluting on the edges. The flowers have especially fine form, substance, and finish. Tall, well branched stalks. 44 in. \$8.00

**BRONZSPUR** (Nies) The combination of sepia, old gold, and yellow is most unusual and pleasing. Lovely for flower arrangement, especially under artificial light. 55 in. \$3.00

**DUTCH DEFIANCE** (Nies) Very large bold, blue flowers that attract a great deal of attention. Splendid in form, finish, and substance, its charm is enhanced by a yellow signal patch on the frilled falls. 38 in. \$10.00

**EUPHROSYNE** (Washington 1931) A very bright blue-purple of splendid shape and form; decidedly yellow signal on falls; several flowers open at one time. 40 in. \$3.00

**FAIRY WAND** (Washington 1931) Old gold tinted with light blue; large flowers on tall erect stems, well above foliage. One of the best. 45 in. \$4.00

**GOLDEN SCEPTRE** (Mrs. T. A. Washington 1948) L. An iris of distinction, and the most beautiful yellow spuria that I have seen. Perfectly formed flowers with under color of cream, heavily flushed with glowing yellow. The blooms are open in form, and charmingly fluted on both standards and falls. The many blooms are perfect in form and borne on tall well branched stalks. Ideal as a cut flower, and most decorative in the garden. 42 in. \$12.00

**GRAMINEA** Species from Europe; blue-purple; odor of ripe apricots; charming for flower arrangement. \$1.00

**HAZY HILLS** (Washington 1931) S. deep delft blue; F. hazy blue with old gold flush; Brilliant yellow signal and throat. Styles are smoky blue and old gold. 4 ft. \$3.50

**LUMIERE** (Washington 1936) Semi-erect standards of white with yellow midrib; Falls very flaring, of pale chrome-yellow with deeper yellow signal. Luminous center to the flower. 4 ft. \$3.50

**MONTEAGLE** (Washington 1936) Bronzy red purple self with yellow halo and deeper yellow signal. S. semi-erect; F. flaring. Late blooming. Glowing color. \$3.00

**SKYLINE** (Washington 1936) Misty gray blue flowers with semi-erect standards and flaring falls. Soft canary yellow halo and long deep yellow signal. Charming. \$3.50

**SUNNY DAY** (H. P. Sass 1932) A tall gleaming yellow spuria of great beauty and form. H. M., A. I. S. 1936. \$2.00

## *Hemerocallis*

**ANNIE LAURIE 37-119** (Nesmith 1940) Beautifully reflexed flowers with a background of soft maize yellow overlaid with medium carmine rose, this color extends well down into the delicate yellow throat of the bloom. July-Aug. 38 in. \$2.50

**ANTIMONY 37-91** (Nesmith 1940) A flaring and frilled flower of pinkish apricot buff. The petals have a touch of antimony yellow which carries well down to the throat of soft javel green. July-Aug. 40 in. \$1.50

**ARCTIC STAR 39-43** (Nesmith 1940) Starry trumpet shaped flower of Bartya yellow flushed slightly deeper toward the center. The effect of the large flower is a creamy buff lightly waved and fluted at the edge. Aug. 40 in. \$3.00

**AUGUST PIONEER** (Stout) Chrome yellow flowers with a reddish flush on the petals. Many flowers on well branched stalks. Aug.-Sept. 3 ft. \$1.00

**AUTUMN DAWN 45-166** (Nesmith 1946) Clear and cool as autumn sunlight at dawn, this empire yellow is a valuable addition to the late blooming hemerocallis. Wide open flowers of heavy smooth substance with broad petals and sepals recurving at the tips. The stalks are sturdy with good branching. Aug.-Sept. 45 in. \$8.00

**AUTUMN RED 40-223** (Nesmith 1941) A velvety red with a long season of bloom. An open semi-flaring flower with petals of Vandyke red flushed with Nopal red. The sepals have the same colors with a lighter line at the midrib. 15 to 20 flowers on well branched stalks. Aug.-Sept. 39 in. \$1.50

**BALLET DANCER 43-116** (Nesmith 1946) Dainty and charming, this hemerocallis has many appealing qualities and gives a very pink effect in the garden. The full flowers are smoothly finished and are between Buff pink and Grenadine pink (Ridgway), but the flat finish of the plates lack the luster of these smoothly finished blooms. The stalks are well branched of medium height. July-Aug. 38 in. \$7.50

**BALTIMORE BELLE 47-7** (Nesmith 1948) Charming and cheery, this rosy pink is lovely for flower arrangement or border planting. The large open flowers are Orient pink with a halo of deeper jasper pink just above the creamy yellow throat. Tall, with good branching, it gives a very pink effect in the garden. July-Aug. 43 in. \$7.50

**BARONET** (Stout). The petals and sepals are a sprightly fulvous red, blending into the orange throat. The semi-rounded flowers are recurving, and the sharp contrast of the two colors is most pleasing. June-July. 28 in. \$2.00

**BANDANA 38-404** (Nesmith 1945) Gay and brilliant as a brightly colored kerchief, the rich tomato red and orange yellow tones are so skillfully blended that it is one of the most colorful hemerocallis in the garden. The tomato red petals have a narrow fluting of yellow at the edge. The sepals are a smooth even blending of the colors. Tall with many flowers and good branching. Aug. 40 in. \$6.00

**BERTRAND FARR** (Stout 1941) Full flowers with recurving petals and sepals. The color is grenadine pink (Ridgway) with darker rose coloring in the veins. July 36 in. \$3.00

**BLACKBURNIAN 39-149** (Nesmith 1943) A recurving flower of red that has great garden value. The body color is Indian red with a mahogany purple overflush on both petals and sepals. The star-shaped cup is the same brilliant orange we see at the throat of that lovely bird the Blackburnian Warbler, hence the name. The flowers have firm substance and the stalks are well branched. July-Aug. 40 in. \$3.00

**BLACK CHERRY** (G. Douglas 1945) A hemerocallis that is well named for the color is almost identical with the deep red purple shades of large black cherries. The flowers are beautifully formed with recurving petals and sepals. A flower so rich in black red tones that it stands out in the garden. Floriferous and does not fade under hottest sun, the graceful flowers are in proportion to the well branched stalks. July-Aug. 36 in. \$4.00

**BLACK EMPEROR** (Russell). A rich deep red with a golden cup in the center of the bloom. Tall with good branching. July. 40 in. \$3.50

**BLACK FALCON 39-125.** (Nesmith 1941) Incredibly dark, this is the nearest to black of any hemerocallis I have produced. The flowers are large, open and wavy at the edges with a shallow pale canary yellow cup. A stunning and unusual hemerocallis. July-Aug. 38 in. \$8.00

**BLITHESOME 40-357** (Nesmith 1945) A charming cream self with heavy substance and delicious fragrance. There is a dense opaque quality that is different from other cream yellows. The flowers are open in form with a strong raised midrib on the petals. Well branched. Aug. 48 in. \$7.00

**BOLD COURTIER** (Nesmith 1939) The Pompeian rose petals are broad and especially full at the throat with a creamy yellow line down the center. The yellow sepals are re-curved, and slightly flushed with the rose of the petals. A beautiful outstanding bi-color. July-Aug. 38 in. \$3.00

**BRAVE WARRIOR 45-181** (Nesmith 1946) The undercolor is Ox-blood red with an overflush of Bordeaux (Ridgway) on the petals. The flowers are wide petaled of pleasing open form and so full of glowing color that they make a stunning clump in the garden. July-Aug. 40 in. \$4.50

**BRIGAND 38-345** (Nesmith 1944) A big flower with a distinctive pattern of rose and mahogany on the large full blooms. The flowers have broad recurving petals and sepals, with a cream midrib on the petals, and a halo of deep rose in the throat. Well branched stalk. July-Aug. 43 in. \$5.00

**BRUNETTE** (Stout). One of the earliest reds to bloom. The full flowers are medium in size, and the plants bloom profusely. June. 36 in. \$1.50

**BURGUNDY** (Nesmith 1937) We have increased the stock of this very nice red so that we can again list it. Sepals and petals are an even tone of wine purple with soft yellow lighting in the throat, and deeper rose flush in the halo. July. 39 in. \$3.00

**BURNT ORANGE 43-81** (Nesmith 1948) An unusual compact flower of deep yellow embellished by a velvety flush of reddish orange on the petals. Tall with rather high branching, it makes a very showy clump in the border. July-Aug. 44 in. \$6.00

**CABALLERO** (Stout) Large lily-like bicolor with rose petals and yellow sepals. A charming hemerocallis that is very effective in the garden. 40 in. \$2.00

**CANARI 39-32** (Nesmith 1940) Large open flowers of palest canary yellow shading to very light Dresden yellow in the throat. The blooms have a satiny finish and seem like a spray of cream lilies. The scapes are well branched with twenty buds to a stalk. July-Aug. 38 in. \$5.00

**CANDY HEART** 39-188 (Nesmith 1947) Charming and delicate in color, this dainty hemerocallis is especially suited to front of the border planting or flower arrangement. A very pale flesh pink with a well defined halo of Carmine rose in the heart of the flower. A thick textured bloom with great nicety of finish. Strong sturdy stalks with good branching. Aug. 38 in. \$6.00

**CHENGTU** With the exception of *Fulva rosea* this species is the most attractive of all the fulvous types. Tall stalks filled with flowers of blended red, deepening to intense red in the throat. 3½ ft. Aug.-Sept. \$2.00

**CHIANTI** 38-19 (Nesmith 1943) A raspberry self with a purple effect in the garden. Sepals and petals recurve from the tiny yellow cup. According to Ridgway, the color is pomegranate purple, but this does not give a picture of these medium sized flowers. July-Aug. 38 in. \$3.00

**CHLOE** (Nesmith 1938) Full ruffled flower with deep yellow background, flecked and powdered with warm golden sepia. The darker sepals of burnt orange are most unusual. 3½ ft. Aug. \$2.00

**CIRCE** (Stout 1937) Clear yellow flower of medium size. The blooms are well placed on freely branched stalks. Very effective in the garden. July. 40 in. \$2.00

**COLLEEN** (Nesmith 1937) Full flowers with a soft buff under color flushed salmon on petals and sepals. Open flowers on well branched stalks. Very free flowering. July-Aug. 40 in. \$2.00

**CORALLINE** 37-74 (Nesmith 1940) Large open flowers with background of maize yellow flushed with shrimp pink, slightly lighter at the edge of the petals and sepals. Twenty or more buds. Aug-Sept. 39 in. \$4.00

**CROWN OF GOLD** (Nesmith 1933) Clear deep orange flowers of great beauty. 3 ft. May-June. \$1.50

**CRYSTAL PINK** (Nesmith 1938) A salmon flower with deeper rose halo, and over all a frosty sheen that gives great charm to the bloom. Tall and well branched. July-Aug. 42 in. \$4.00

**DAILY DOUBLE** (G. Douglas 1946) A double flower of attractive form and color. The flowers are Mikado orange (Ridgway) faintly flushed with a deeper tone. The contour of the flower is the same as other hemerocallis, but in addition it has three perfect petaloids in the center of the bloom as well as stamens and pistil. Usually the flowers that open one day are double, followed the next day by some that are single, but most of the flowers keep this doubling. A long step forward toward double hemerocallis. July-Aug. 40 in. \$6.00

**DAUNTLESS** (Stout 1935) Pale Cadmium yellow with greenish throat and delicate fulvous touch in center of each petal. A great garden favorite. 2½ ft. July-Aug. \$1.50

**DAWN PLAY** 37-17 (Nesmith 1938) An open flower of deep velvety rose, illumined by a golden heart. Very tall and stately it has a resplendent beauty that stands out in the garden. When established it throws second blooming stalks late in the season. 50 in. July-Aug. \$5.00

**DEBONAIR** 39-27. (Nesmith 1940) Large spreading blooms with recurving segments. The heart of the flower is lemon chrome, blending out to salmon pink. Tall and floriferous with many blooms on each stalk. July-Aug. 40 in. \$2.00

**DOLLY VARDEN** (Nesmith 1939) Open full flowers of Chinese coral with slight lines of deeper rose on the petals and sepals. Very floriferous with sturdy stalks. Lovely in half shade. July. 40 in. \$2.00

**DOMINION** (Stout) Extra large full flowers of rich red coloring in concentric three toned pattern. When established, it often throws second bloom stalks. 38 in. July. \$2.50

**DRESDEN CHINA** 40-218 (Nesmith 1943) Smoothly finished flower, that in arrangement of colors reminds one of dainty Dresden china. The pinkish cinnamon petals have a

midrib of amber with a halo of orange cinnamon just above the lemon yellow throat. The sepals are amber with a shining finish. The flower has a crisp cool effect. Lovely for flower arrangement. July-Aug. 39 in. \$2.00

**DRESDEN DOLL** 45-106 (Nesmith 1946) Blended flowers with a soft cream background flushed with Salmon buff. The substance of the flowers is so crisp and firm that the petals and sepals stand out like bits of dainty china. Tall and very widely branched. I have found this hemerocallis very valuable in breeding on account of the tall strong stalks and splendid branching. July-Aug. 50 in. \$3.00

**EBONY BOY** 43-86 (Nesmith 1948) If you desire warm rich color for rock garden or front of the border planting, I recommend this variety. A late dark red purple self with a tiny gold cup. Not tall, in fact almost a dwarf, the well formed flowers are medium in size, and in keeping with the strong slender stalk. Aug.-Sept. 20 in. \$4.00

**FAIR MORN** 38-164 (Nesmith 1943) One of the first pinks to bloom. The color is fresh and clear with sepals of seashell pink and petals of Jasper pink. Gives a decided pink effect in the garden. July. 40 in. \$4.00

**FAIRY JEWELS** 43-89 (Nesmith 1947) The tallest and latest flowering pink that I have seen. The full open blooms are between Azalea and Shrimp pink, a self with very firm substance, the color is smooth and extends to the center of the flower. An added attraction is the splendid branching up and down the very tall stalk, and when established, many of the branches re-branch. Aug. into Sept. 46 in. \$8.00

**FAIRY LUSTRE** 47-17 (Nesmith 1948) A full spreading flower of light Jonquil yellow, crisped and ruffled at the edges. Fragrant, and late blooming, the flowers seem enveloped with glistening frost work, that gives a delightful and entirely different effect from any other hemerocallis. Aug.-Sept. 40 in. \$8.00

**FAR NORTH** 45-180 (Nesmith 1946) There is a great demand for good large flowered light yellow hemerocallis for most of our gardens need them to lighten up drab spots in late summer to say nothing of their cool refreshing charm. I have found Far North, a soft Naples yellow, most successful in my own garden. The heavy substance flowers are large and full borne in clusters on very strong sturdy well branched stalks. Aug. 52 in. \$9.00

**FELICITY** 46-225 (Nesmith 1947) The very large full, firm textured flowers of light Aureolin yellow are cup-shaped with petals and sepals recurving at the ruffled edges. The very sturdy well branched stalks have from 35 to 40 flowers, and it has the longest season of bloom of any hemerocallis that I know. I have used this variety extensively in breeding with most satisfactory results. July-Sept. 40 in. \$4.50

**FIRE-OPAL** 37-40 (Nesmith 1946) A very recurving bicolor with the sepals much deeper in color than the petals. The petals are deep cadmium yellow with a cream midrib. The under color of the sepals is zinc orange heavily flushed with Carmelian red. The intensity of color, slender form and unique shape of the flowers make this variety especially good for flower arrangement. July-Aug. 38 in. \$4.00

**FIRETHORN** 45-112 (Nesmith 1946) Medium sized flowers of Dragons blood red with ruffled petals and sepals and a rich orange cup with red stamens in the center of the bloom. Of multiflora parentage it has a myriad of bright red flowers carried in clusters on slender strong stalks. A bright spot of color in late summer. Aug.-Sept. 38 in. \$3.00

**FLAMBOYANT** (G. Douglas 1947) The name is most descriptive of this stunning hemerocallis. The petals and sepals are brilliant deep Indian yellow set off by a bright red halo. The gracefully recurving petals and sepals are medium in width with heavily fluted edges. The stalks are tall, well branched, and strong. Free flowering with vigorous growth. 42 in. July-Aug. \$8.00

**FLAVINA** (Fewkes 1933) A charming flower of bright lemon-yellow. Quite distinct from any other hemerocallis, and a delightful rock garden subject. 24 in. May-June. \$2.00

**FULVA ROSEA** The most beautiful of any known species of hemerocallis. The flowers are a lustrous rose pink, and are borne on tall graceful stalks. 3½ ft. July-Aug. \$2.50

**GAY ROMNEY 46-176** (Nesmith 1948) Bright and gay with gypsy colors, this full flowered variety has an undercolor of antique ruby red with a deeper velvety flush on upper part of the petals and sepals, extending well into the throat of the bloom. Floriferous and brilliant with many blooms on tall well branched stalks, it is exceptionally good for color accent in the garden. July-Aug. 42 in. \$7.00

**GAY TROUBADOUR 39-48** (Nesmith 1941) Entirely different and charming is this most unusual red and cream yellow bicolor. The petals are bright Indian red in stunning contrast to the sepals of frosty maize yellow. Very flaring flowers. A flower of great beauty and refinement and a great favorite with garden visitors. July-Aug. 40 in. \$4.00

**GLOWING GOLD 37-77** (Nesmith 1940) Large persimmon orange flowers with petals slightly twisted at the tips as in Wau-Bun. A broad recurring flower and it is the most brilliant orange that I have seen. Withdrawn to increase stock, we can again offer it in the catalogue. July-Aug. 36 in. \$5.00

**GOLDEN DAWN** (Nesmith 1938) Large full flowers of orange yellow. Early and long season of bloom. June-July. 36 in. \$3.00

**GOLDEN FLEECE** (Nesmith 1938) An open yellow flower with firm wax-like substance. The petals are slightly reflexed, the sepals with lighter edge. The flowers are borne on tall well branched stalks. Aug.-Sept. 50 in. \$3.00

**GOLDEN GOBLET 39-36** (Nesmith 1940) The upright blooms of rich cadmium orange are shaped like a goblet with the petals narrowing at the tips. Thirty buds on candelabrum branched stalks. July-Aug. 39 in. \$1.50

**GOLDEN GRAIN 38-365** (Nesmith 1944) All golden yellow, these large lily like blooms are most effective in the garden. Tall with full ruffled flowers of strong firm texture, and exceptionally good branching, this hemerocallis always attracts attention. July-Aug. 45 in. \$5.00

**GOLDEN SCEPTER** (Nesmith 1939) A stately hemerocallis with flowers of deep yellow. A large slender flower with deeply fluted petals and sepals, and heavy wax like substance. Forty-nine buds to a stalk. July-Aug. 45 in. \$2.50

**GOLDEN WEST** (Sass 1933) Large yellow flowers of extremely fine substance. 4 ft. July 5th-Sept. 10th. \$4.00

**HARVEST GOLD 46-232** (Nesmith 1947) A multiflora hybrid of Cadmium orange with full ruffled flowers, borne on slender strong stalks. The blooms are larger than most multiflora hybrids. Late blooming, it adds a needed bit of color at this time of year. Aug.-Sept. 45 in. \$4.00

**HER GRACE 41-62** (Nesmith 1944) A patrician flower of palest yellow with large open blooms of heavy firm substance, lightly ruffled. According to Ridgway the nearest color is Martius yellow which is very light. Medium in height, the profusion of bloom, and strong sturdy stalks make this a favorite with garden visitors. July-Aug. 38 in. \$5.00

**HONEYDEW 46-233** (Nesmith 1947) Cool and delectable this Melon buff is a lovely companion for Harvest Gold. The flowers are similar in shape, height and blooming season. There is a nicety of finish about these flowers that makes them delightful for the garden, and ideal for flower arrangement. Aug.-Sept. 45 in. \$4.00

**HONEY REDHEAD 40-222** (Nesmith 1942). A very brilliant and unusual combination of colors that is praised by hemerocallis judges. The flowers are open and flaring of velvety yet bright red with a distinct border of creamy yellow. Medium height with good branching. July-Aug. 38 in. \$4.00

**IVORY CHALICE 40-503** (Nesmith 1946). Full medium sized flowers of very pale yellow (reed yellow). Lightly ruffled at the edges. The flowers have very heavy substance and are borne on tall closely branched stalks. Very lovely as a cut flower or in the garden. Aug. 40 in. \$5.00

**JAVA 39-63** (Nesmith 1940) Lovely bell shaped flower of delicate apricot orange evenly flushed with rosy cinnamon which extends far down leaving only a tiny apricot cup in the center. Late blooming. Aug. to Sept. 37 in. \$1.50

**JUDGE ORR** (Orr 1939) A soft orange yellow that blooms at iris time. Prolific and free flowering. Nice planted with Louisiana blue iris. June. 30 in. \$1.50

**KILLARNEY LASS 39-121** (Nesmith 1944). Captivating and charming, it gives a very pink effect in the garden. The center of the petals is bright geranium pink bordered by soft flesh pink. The sepals are flesh pink lightly flushed deeper. A very lovely hemerocallis and a splendid parent for breeding pinks. Withdrawn to increase stock, we can again offer it in limited quantity. Aug. 36 in. \$8.00

**LADY FAIR 39-105** (Nesmith 1946) Some flowers are brilliant in the garden while others are entrancing with their delicate colors and Lady Fair is one of the latter for it is a blending of Jasper and flesh pink with a creamy undertone. The large flowers have a glistening sheen and give a charming effect in the garden. July-Aug. 38 in. \$6.00

**LADY FERMOY HESKETH** (Perry) Handsome flowers of canary yellow, flushed deeper at the center. July. \$3.00

**LUSTROUS 38-378** (Nesmith 1942). In color these lovely flowers remind me of the cheery Clusiana tulips. It is a large flower with bright pink color overflushed with a soft lustrous sheen. Tall and well branched with many flowers on each stalk. July-Aug. 40 in. \$5.00

**MABEL HIBBERSON** (Perry) A coppery old rose with a golden throat. The petals and sepals are recurring and the flowers are graceful in form. 40 in. \$2.50

**MATADOR 37-21** (Nesmith 1940) The stock of this hemerocallis has been increased sufficiently so that we can again list it. A bright, rich mahogany flower with a deeper velvety flush on the petals. A full cup-shaped bloom of great brilliance. Tall with good branching. July-Aug. 40 in. \$2.50

**MERRY MOOD 40-481A** (Nesmith 1943) A cheery pink that is most effective in the garden. According to Ridgway the petals are Rose dore. Sepals have a lighter background flushed with deeper color. There is a Jasper red zone above the yellow throat. Medium flowers on well branched stalks. July-Aug. 40 in. \$4.00

**MINUET 38-142** (Nesmith 1941). Subtle blend of frosty pink shadowed deeper rose on the petals and sepals giving a rosy pink effect. The flowers are of Fulva rosea form, but larger and the scapes are better branched. Aug. 40 in. \$3.00

**MISSION BELLS** (D. Hall 1945) Large wide petaled, ruffled flower of clear medium yellow producing up to 52 flowers to a stalk on established plants. A fine variety that is a strong grower and a free bloomer. July-Aug. \$4.00

**MME RECAMIER 43-100** (Nesmith 1948) Full recurved flowers of Récamier pink gaily painted watermelon pink or tips of the petals and sepals. The smoothly finished blooms are evenly spaced on tall well branched stalks. Cool and refreshing in color, it is the latest flowering pink in the garden. Aug.-Sept. 42 in. \$12.00

**MOONLIGHT COCKTAIL** (G. Douglas 1946). Cool and refreshing, this lovely pale apricot is charming for flower arrangement or in the garden. The flowers have broad petals with a creamy midrib, and over the whole bloom is a very frosty sheen. July. 48 in. \$8.00

**MOONRAY 37-80** (Nesmith 1940) A pale yellow with a clear cut semi halo of Pompeian red. The recurved petals and sepals are waved and flare widely from the shallow cup. Dainty and charming. July-Aug. 30 in. \$1.50

**MOROCCO RED 38-168** (Nesmith 1940) Brilliant flower of velvety Morocco red with the color evenly placed on the petals and sepals, extending to the heart of the flower leaving just a bit of orange showing in the cup. July-Aug. 38 in. \$5.00

**MRS. B. F. BONNER** (Russell) A pale lemon yellow of larger size than Hyperion but with very similar arrangement of color. The stalks are well branched. July. 40 in. \$1.00

**MRS. HUGH JOHNSON** (Russell) Rich deep red with an overflush of purple that gives a very smooth satiny sheen to the flowers. Full flowers with broad petals and sturdy well branched stalks. A stunning hemerocallis. July-Aug. 40 in. \$3.00

**MYSTIC MOON** 45-182 (Nesmith 1947) Ethereal as moonlight, the very pale yellow flowers open late in the afternoon, and remain in perfect condition throughout the next day. The firm substanced flowers are broad petaled of full flaring form, ruffled at the edges. A distinct addition to the evening flowering class. July-Aug. 40 in. \$7.00

**PAGE BOY** 38-43 (Nesmith 1940) Medium sized bell shaped flowers of deep chrome on tall scapes carried above the foliage. The variety has multiflora blood, carrying forty flowers on one stalk. Aug.-Sept. 44 in. \$3.00

**PAISLEY** 40-521 (Nesmith 1943) Uniquely patterned hemerocallis that has the softly blended colors of an old time Paisley shawl. The flowers are broad and full with the color going well down into the throat, leaving a tiny cup of yellow. The color is a mixture of brown and reddish mahogany with petals lighter than the sepals. Flowers have heavy substance. July-Aug. 38 in. \$2.00

**PATRICIA** (Stout 1935) A clear and even tone of pale yellow with a greenish throat. A charming and full formed flower with pronounced fragrance. July. 3 ft. \$2.00

**PEPPERMINT** (G. Douglas 1948) Bright and delectable as pink peppermint candy, this hemerocallis possesses great color appeal. The large open flowers have a pale cream midrib on the petals that is in pleasing contrast to the pinkness of the flower. Tall and well branched. July-Aug. 43 in. \$8.00

**PERSIAN PRINCESS** (Nesmith 1938) The petals are deep velvety red with a heavy overflush of purple, the sepals are a shade lighter, but with the same depth of color. An impressive hemerocallis. July-Aug. 40 in. \$4.00

**PETER PAN** (Stevens) The brightest and best early blooming red. The flowers are medium in size and are borne in clusters on very well branched stalks. Bright and cheery, it is a great addition to any garden. June-July. 36 in. \$5.00

**PETER PUMPKIN** 43-43 (Nesmith 1946) A perfectly branched hemerocallis that is as deep orange in color as a Hallowe'en Jack-o-lantern. A very full cup-shaped flower with broad overlapping petals and sepals that are fluted on the edges. An absolute self with many flowers of heavy vellum substance. July-Aug. 38 in. \$3.50

**PINK CHARM** 38-181 (Nesmith 1940) Beautiful open flower with very recurving petals and sepals of soft Ocher red giving the effect of a deeply colored coral pink lily. The center of the flower shows a star of light cadmium in pleasing contrast to the pink stamens. Aug.-Sept. \$4.00

**PIQUANTE** 38-383 (Nesmith 1940) An unusual and charming self toned flower of Eugenia rose with cadmium yellow in the heart. The blooms have a decidedly raspberry pink coloring. Aug. 40 in. \$3.00

**POTENTATE** 39-100 (Nesmith 1943) Luminous flower of pansy purple, so smoothly finished that the surface of the bloom has a distinct satiny sheen. It is a self with broad full petals and sepals with the purple going way down in the throat, even the stamens and pistil are done in purple. Outstanding in this color. July-Aug. 42 in. \$10.00

**PURPLE AND GOLD** 39-40 (Nesmith 1940) Subdued yet glowing tones of deep ox-blood red heavily flushed dark velvety maroon purple with a contrasting shallow cup of marigold orange. The name gives a good description of this full rounded flower of most outstanding richness. July-Aug. 39 in. \$4.00

**PURPLE DUSK** 43-70 (Nesmith 1947) This very dark red purple always attracts attention in the garden. The large flowers with broad petals and sepals are Ox-blood red with no other color showing in the throat. It is one of the latest flowering in the dark red purple class, and is especially good for color accent in the garden. Aug. 42 in. \$7.00

**PURPLE FINCH** 39-117 (Nesmith 1942). A stunning hemerocallis with the same iridescence we see on the head of the colorful bird the Purple Finch. A very rich glowing flower with full recurving petals and sepals of red purple with a darker flush above the cup of yellow. The stalks are strong with twenty or more flowers. July-Aug. 42 in. \$6.00

**PURPLE MOOR** 39-122 (Nesmith 1942) Very dark glistening purple with a yellow gilding in the center of the bloom. The color as near as it can be matched in Ridgway is Dahlia purple. The blooms are of good size of open cup shaped form. July-Aug. 40 in. \$5.00

**PYGMALION** 44-1 (Nesmith 1948) The charm of this winsome bicolor is in the skillful blending of coral pink and creamy yellow. In color tone, it is between Debutante and Su-Lin, the pastel pink petals and sepals of deep ivory merging into creamy yellow in the heart of the flower. The stalks are exceptionally well branched with many buds, thus giving a long season of bloom. July 1st to Aug. 20th. 40 in. \$6.00

**RAJAH** (Stout 1935) A hemerocallis with gaily colored blooms, the throat and background of the flower is orange with eye zone of garnet brown. July-Aug. 3½ ft. \$1.50

**REGAL LADY** 38-28 (Nesmith 1941) A stately rose bicolor of early blooming habit. Large flowers with deep rose petals blending into a deeper rose zone bordering the pale yellow cup. The cream sepals are faintly flushed with rose giving the effect of a bicolor. July. 40 in. \$3.00

**RODNEY** 38-215 (Nesmith 1942) The color is Carnelian red with a cream midrib on the petals, and the sepals definitely bordered by the same creamy color. Over all there is a glistening satiny sheen that is most unusual in a hemerocallis bloom. Well branched stalks. July-Aug. 45 in. \$3.50

**ROSY DAWN** 40-9 (Nesmith 1947) Full, rounded, recurving flowers of Geranium lake with an overlay of deeper Rose purple toward the center of the bloom. The flowers have a smooth satiny finish, and the petals are a bit twisted at the tips as in Wau-Bun. The earliest Rose purple to bloom. June-July. 40 in. \$4.00

**ROYAL RUBY** 39-116 (Nesmith 1942) Withdrawn from the catalogue for several years in order to increase stock, this year we have enough plants to again list it. A marvelous flower of almost crimson red with glow and life throughout. It has the most intense red color that I have seen in a hemerocallis. A smoothly finished flower with full semi-reflexed petals and sepals; a self with almost no yellow in the cup. The stalks are medium height with good branching. July-Aug. 38 in. \$8.00

**ROYALTY** 39-20 (Nesmith 1940) Large open flower of deep maroon with broad petals and sepals. The star shaped cup is rich yellow with the maroon coloring extending down in the throat. The flower is a true maroon with a velvety almost blue purple sheen on the petals and sepals. Fifteen to twenty blooms on each scape. July-Aug. 40 in. \$5.00

**RUDDY RED** 40-33 (Nesmith 1944) This hemerocallis has depth of color yet gives a glowing red effect. The petals of Vandyke red are smoothly finished. The sepals have a yellow background flushed with red. Well branched. July. 38 in. \$3.00

**SACHEM** (Stout) Rich deep red with a throat of yellow in sharp contrast to the outer red zone. The color holds well in hot sun. Well branched. 40 in. \$2.00



- SAFFRON 39-23** (Nesmith 1940) Saffron yellow self with a full halo of brilliant zinc orange. The petals are slightly twisted as in Wau-Bun. Very colorful with great garden value. Plant near Satsuma, China Sea, and Summer Gold for lovely gradation of color. July-Aug. 38 in. **\$2.50**
- SAN TOY 45-30** (Nesmith 1948) Neat and trim, the full small flowers are deep rubicund in color. A self with heavy substance, and very fine branching, it is especially nice for flower arrangement as well as in the garden. July-Aug. 38 in. **\$6.00**
- SATURN** (Stout 1937) A multiflora hybrid with many clustered flowers of dark orange red blending into a yellow marginal band. Slender but strong stems. 48 in. **\$2.00**
- SATSUMA 39-30** (Nesmith 1940) A very delicate apricot flower with flaring slightly recurving petals, the halo flushed a deeper apricot buff. The flower has an opaque frosty sheen tinted with the faintest pinkish apricot near the throat. Aug. 40 in. **\$3.50**
- SHADOW ROSE 41-121** (Nesmith 1945) Firm compact flowers of rosy pink shadowed by deep rose in the center, giving a rose pink effect in the garden. Tall, well branched and late blooming. Aug.-Sept. 40 in. **\$6.00**
- SIENNA 38-290** (Nesmith 1940) A bell shaped flower with petals and sepals recurved, frilled and almost ribbed. The yellow background is flushed apricot orange with very little yellow showing in the cup. Aug.-Sept. 38 in. **\$3.00**
- STARLIGHT** (Nesmith 1937) One of my earlier introductions which was withdrawn to increase stock but now we offer it again. A tall well branched pale yellow with the petals nicely fluted and sepals smoothly finished. Sweetly scented. July. 40 in. **\$5.00**
- STARSONG 41-49** (Nesmith 1943) In 1943 the demand for this variety was so great that we had to withdraw it from the catalogue in order to increase stock, but now we have sufficient stock to list it again. The flowers are neat and trim with sepals of pale salmon and petals of a deeper tone. Over all there is a lustre that gives a luminous glow to the whole flower. A gem for the rock garden. July. 12 in. **\$10.00**
- SU-LIN 40-215** (Nesmith 1941) The name is Chinese and freely translated means "a little bit of something precious," therefore it seems a fitting name for this lovely bi-color of pale mauve and creamy yellow. The flowers are open and flaring with petals of orchid pink and sepals of light yellow. July-Aug. 35 in. **\$4.00**
- SUNRAY 38-200** (Nesmith 1941). Deeper in color than Moonray, but equally lovely, this smoothly finished flower of apricot yellow has a purple zone in the throat and is a good companion for the paler Moonray. July-Aug. 36 in. **\$3.00**
- SWEETBRIAR** (Nesmith 1938) Lustrous flower, larger in size and much better formed and branched than Fulfa rosea. The fresh pink petals and sepals are well reflexed showing a delicate yellow cup. The perfection of form of the flowers lends added charm to this lovely hemerocallis. 40 in. **\$4.00**
- TA MING 45-35** (Nesmith 1948) Rarely does one see a hemerocallis with more perfect form and finish. The full orange-buff flowers (deep Ta Ming in the color chart) have evenly fluted edges on both petals and sepals, and with such heavy substance that the blooms stay firm and fresh throughout the day even in hottest weather. The exterior of the buds is unique and very attractive with their bright green tips in contrast to the brilliant orange. Medium in height and free flowering. July-Aug. 35 in. **\$8.00**
- TARUGA** (Stout 1943) Charming and delightful is this pale yellow with wide open flowers abundantly produced on tall well branched scapes. The petals are twisted at the tips as in Wau-Bun. July. 40 in. **\$3.00**
- TAPERLIGHT 40-439** (Nesmith 1947) Cream in color, this floriferous hemerocallis is especially good for the front of the border. The flowers are large, and very well formed with lush green foliage coming up above the lowest flowers. Landscape architects say it is especially valuable for garden effect. July-Aug. 36 in. **\$3.00**
- THE SULTAN 39-185** (Nesmith 1944) Very dark red with a gold throat. The color in Ridgway is burnt lake, but the flat finish in the color chart gives no idea of the depth of color and velvety finish of this deep red. A self with broad compact petals and sepals. July-Aug. 36 in. **\$7.00**
- THUNDERHEAD 47-1** (Nesmith 1948) As the name implies, this is a very dark hemerocallis. A self with full open flowers of velvety red, flushed almost black, with very little deep yellow at the center of the bloom. In spite of the depth of color there is a lustrous sheen that makes it stand out in the garden. Very well branched sturdy stalks. July-Aug. 40 in. **\$10.00**
- TOKAY 40-364** (Nesmith 1943) Large open flower of salmon with a deeper pink zone on the petals. The petals and sepals are medium in width and the blooms give the effect of flaring lilies. The stalks are widely branched. A hemerocallis that has great garden value for its late blooming season. Aug.-Sept. 50 in. **\$4.00**
- TRACERY 39-70** (Nesmith 1944) A very full broad petaled flower of pale Chalcedony yellow with a delicate lace like tracery of salmon buff in the center of the open cup shaped bloom. Lovely and delicate in color, but with exceptionally firm substance, and sturdy well branched stalks, this hemerocallis always attracts visitors. Aug. 40 in. **\$4.50**
- VESPERS 38-161** (Nesmith 1941) There is a quiet elegance about this very pale cream that gives it great distinction and beauty. A deftly turned bloom of extremely heavy substance and open flaring form with petals and sepals lightly ruffled at the edges. The flowers open late in the afternoon and remain fresh during the next day. When plants are established they throw second bloom stalks lasting into September. July-Sept. 39 in. **\$5.00**
- WINDSOR TAN 41-63** (Nesmith 1948) There seems to be great interest in new and unusual colors in the hemerocallis, and this brownish bicolor of Windsor Tan and buff yellow has impressed many as being very distinctive. The petals are broad and firm of glowing golden brown with sepals of yellow lightly flushed with warm sepia. Not tall, but unique in color and free flowering it is most effective in the rock garden or front of the border. July-Aug. 28 in. **\$8.00**
- ZOUAVE** (Stout) A red bicolor with petals rich fulvous red and sepals lighter and a deeper mid zone on the petals. Often reblooms in September. Good in the evening. June-July. 36 in. **\$1.50**

**FAIRMOUNT PINK SERIES.** They range in color from pale salmon to deep rose, and are seedlings that will not be named, yet they are very lovely. Many of them are similar to named varieties, and will give a charming effect in the garden. These will not be sold to dealers as they are essentially for private gardens where one wishes to have bloom through July and August. **6 Plants in Color Range for \$12.00**  
**12 Plants for \$20.00**

**FAIRMOUNT RED SERIES.** These range in color from bright red to very deep red purples, and are seedlings that will not be named, yet for those wishing certain color effects in the garden they will prove most useful. These are not to be sold to dealers. **6 Plants in Color Range for \$12.00**  
**12 plants for \$20.00**

Following is a list of hemerocallis from other hybridizers that we have growing in the garden, but not in sufficient quantities to list this year. If especially interested in any of them write us and if possible we will supply you. They will be on display for garden visitors to see: Afterglow, Apricot Queen, August Orange, Blackhawk, Black Prophecy, Caprice, Chanticleer, Chief Fontenelle, Crimson Star, Duncan, Emperor Jones, Fantasia, Firebrand, Georgia, Halo, Kanapaka, Manchu, Monte, Painted Lady, Port, Prairie Gold, Red Perfection, Rose Gem, Ruby Supreme, Stargazer, Sungod, Viking, Wolof.

We have omitted several of our introductions from the catalogue. This has been done in order to increase stock. As soon as more plants are available they will be listed in the catalogue.

*Hemerocallis*

## WELL KNOWN HEMEROCALLIS—

Especially Priced  
\$1.00 each—10 for \$7.50

BAGDAD—Bright red and gold  
BIJOU—Red multiflora, lovely.  
BOUTONNIERE—Multiflora blend.  
EMILY HUME—Rich golden yellow.  
HYPERION—Fine pale yellow.  
LINDA—Pastel pink, deeper halo.  
MRS. JOHN J. TIGERT—Bright red.  
OLD VINTAGE—Large wine red.  
STALWART—Tawny reddish bronze.

THERON—Black purple.  
VULCAN—Velvety deep maroon.  
WAU-BUN—Fine yellow.

## OLDER HEMEROCALLIS—

Especially Priced  
75 cents each—10 for \$6.00

APRICOT—Lovely early yellow.  
AUREOLE—Orange yellow, early.  
BARONI—Pale yellow, evening.  
CALYPSO—Pale cream, evening.  
D. D. WYMAN—Orange and red.  
ELIZABETH PYKE—Dwarf bicolor.

FLAMID—Yellow bronze reverse.  
FLAVA—Fragrant yellow; early.  
FULVA—Reddish orange.  
FULVA MACULATA—Large burnished rose.  
GEORGE YELD—Orange and rose.  
J. R. MANN—Large yellow.  
MAY MORN—Early yellow.  
MIDDENDORFII—Early rich orange.  
MIKADO—Brilliant red and orange.  
MRS. A. H. AUSTIN—Large fine yellow.  
MULTIFLORA SUMMER HYBRIDS—Yellow.  
SIRIUS—Yellow with fulvous flush.  
TANGERINE—Rich orange, early.  
WINSOME—Pale yellow, lovely

HEMEROCALLIS  
COLLECTIONS

Only one of a variety.  
Any 6 for \$31.00

Whole Collection for \$45.00

PURPLE DUSK  
BALTIMORE BELLE  
BURNT ORANGE  
SAN TOY  
GAY ROMNEY  
PYGMALION  
FELICITY  
CANDY HEART  
FAIRY JEWELS

If you will pay express 1  
Ebony Boy extra.

## ORIENTAL POPPIES

Collection for \$10.00

AKSARBEN  
SASS PINK  
ENCHANTRESS  
TANAGER  
CORAL CUP  
WHITE DELIGHT

If you pay express charges  
we will send 1 Helen Elizabeth extra.

## SIBERIAN IRIS

Collection for \$10.00

HELEN ASTOR  
MOUNTAIN LAKE  
MOONSPRITE  
SNOWCREST  
TYCOON  
PICKANOCK

If you pay express charges  
we will send Blue Charm or  
Ottawa extra.

*Collections*

(ONLY ONE OF A VARIETY)

ALL PRICES ARE NET



**DAILY DOUBLE**

HEMEROCALLIS  
COLLECTION

Only one of a variety.  
Any 6 for \$15.00

Whole Collection for \$27.00

BRUNETTE  
BARONET  
SAFFRON  
PAISLEY  
MATADOR  
AUTUMN RED  
SACHEM  
COLLEEN  
DOLLY VARDEN  
FIRE OPAL  
RUDDY RED  
TAPERLIGHT  
FULVA ROSEA  
BLACK CHERRY  
PETER PUMPKIN

If you pay express charges  
we will send Firethorn extra.

## FOR

BEARDED IRIS  
COLLECTIONS  
SEE PAGE  
TWENTY-ONE

## HOSTAS

DECORATA  
FORTUNEI  
CAERULEA  
MINOR ALBA  
PLANTAGINEA  
FORTUNEI VIRDIS MARGINATA

If you pay express charges  
we will send Lancifolia var.  
Fortis extra.

## Oriental Poppies

**AKSARBEN** Tall and very large, this lovely light pink is very distinctive with its deep base spots and fluted edges. Sturdy stalks. \$3.00

**ALICE LOUISE BRAUNLIN** A beautiful La France pink with medium sized flowers. The very crinkled petals and dainty purple base spots add greatly to its beauty. \$1.50

**ALLUMEUSE** A splendid new poppy of deep flaming pink, with strong sturdy growth and upright habit. \$2.00

**BLAZONRY** A dazzling poppy of rich glowing Persian-red, and most effective in the garden. My introduction \$2.00

**CERISE BEAUTY** Beautiful cerise-pink flowers. \$1.00

**CORAL CUP** A beautiful six petaled poppy of real pink coral tone; velvety rose-purple stamens; almost no basal blotch; exceedingly tall and a late bloomer. My introduction. \$3.00

**DELIGHT** The flowers have heavy texture, and are the purest shell pink in color with no base spots. Late \$1.50

**ENCHANTRESS** A Neeley hybrid of soft lilac-rose coloring; an improved Masterpiece and extremely popular; rare. \$2.00

**FIELD MAR. VON DER GOLTZ** When this flower first opens it is a very pale pinkish lavender, half way between Perry's Blush and Enchantress in color, rapidly changing to pure white. Much more branching than is usually found in an Oriental poppy. \$3.00

**HELEN ELIZABETH** Heavily crinkled petals of pale La France pink with no dark markings. Nice planted with delphiniums. \$1.50

**JOYCE** Cerise and old rose. \$1.00

**LAVENDER LADY** A new break in color in Oriental poppies. A clean lavender pink of cup shaped form with heavy substance and strong sturdy stalks. One of my own introductions of which I am very proud. Different and beautiful. \$5.00

**LULU NEELEY** Medium in size, but a very fine dark red. \$1.00

**MAXIMA SUPERBA** Few Oriental poppies have such great brilliance as this glowing red with no trace of orange in it. A stunning flower of great garden value. Stock is limited. \$5.00

**MAYFLOWER** (Nesmith 1938). An enchanting poppy with extreme loveliness of form and color. The huge flowers open slowly and seem like crinkled rose buds. The deeply crinkled petals are pure pink. \$3.00

**MRS. HEENK** Rare poppy of beautiful rose coloring. \$1.00

**MRS. PERRY** Lovely salmon pink. \$.75

**MRS. STOBART** English poppy of bright rose coloring; considered the finest poppy to date; rare and excellent. \$2.50

**NEW PERFECTION** Delicate sea-shell pink with feathery black stamens. The petals are so heavily fluted that it has the crisp appearance of being starched and ironed. \$1.50

**PERFECTION** Deep shade of pink, large flowers. \$1.00

**PERRY'S BLUSH** A poppy of rare beauty; blush-white flowers borne on tall sturdy stems; a gem. \$2.50

**PERRY'S WHITE** Satiny white; maroon at base of petals. \$1.50

**SASS PINK** A delicate flesh pink; large flowers of crepe texture; light grey-mauve center; especially well liked. \$1.00

**SEASHELL** (Nesmith 1938) A very delicately colored poppy with the creamy iridescence of pink seashells. The cup-shaped blooms are of heavy wax-like substance. \$3.00

**SHIRLEY** (Nesmith 1938) A charming coral pink poppy of medium height and size. Dainty and pleasing. \$2.00

**TANAGER** A radiant deep red of extreme height and beauty. Selected as the finest red of last year by garden visitors. \$2.00

**WHITE DELIGHT** A lily white poppy with fan shaped petals and dark base spots. \$2.50

**WUNDERKIND** Large flowers of brilliant carmine-rose. A great favorite. \$4.00

## American Iris Society

1948 OFFICIAL SYMPOSIUM OF 100 MOST POPULAR IRIS  
SELECTED BY ACCREDITED JUDGES OF THE SOCIETY

- |                      |                       |                     |                      |
|----------------------|-----------------------|---------------------|----------------------|
| 1. OLA KALA          | 26. NEW SNOW          | 51. BANDMASTER      | 76. ELSA SASS        |
| 2. GREAT LAKES       | 27. LADY BOSCAWEN     | 52. MATTERHORN      | 77. MEXICO           |
| 3. CHIVALRY          | 28. GRAND CANYON      | 53. DISTANCE        | 78. LYNN LANGFORD    |
| 4. BRYCE CANYON      | 29. SOLID MAHOGANY    | 54. REMEMBRANCE     | 79. GUDRUN           |
| 5. HELEN MCGREGOR    | 30. CHANTILLY         | 55. WINTER CARNIVAL | 80. MISSOURI         |
| 6. BLUE RHYTHM       | 31. CASA MORENA       | 56. FIRECRACKER     | 81. NIGHTFALL        |
| 7. SABLE             | 32. DREAMCASTLE       | 57. THE RED DOUGLAS | 82. JUNALUSKA        |
| 8. ELMOHR            | 33. BLUE VALLEY       | 58. GLORIOLE        | 83. THREE OAKS       |
| 9. BLUE SHIMMER      | 34. TOBACCO ROAD      | 59. SPANISH PEAKS   | 84. HARRIET THOREAU  |
| 10. MASTER CHARLES   | 35. KATHERINE FAY     | 60. CITY OF LINCOLN | 85. SHINING WATERS   |
| 11. WABASH           | 36. FAIR ELAINE       | 61. SPINDRIFT       | 86. LORD DONGAN      |
| 12. LADY MOHR        | 37. GARDEN GLORY      | 62. SYLVIA MURRAY   | 87. ORMOHR           |
| 13. BERKELEY GOLD    | 38. ROCKET            | 63. GOLDEN MAJESTY  | 88. DESERT SONG      |
| 14. MULBERRY ROSE    | 39. BLACK FOREST      | 64. CAPTAIN WELLS   | 89. GYPSY            |
| 15. AZURE SKIES      | 40. TREASURE ISLAND   | 65. DAYBREAK        | 90. OLD PARCHMENT    |
| 16. SNOW FLURRY      | 41. GOLDEN FLEECE     | 66. CHRISTABEL      | 91. ARAB CHIEF       |
| 17. AMANDINE         | 42. SPUN GOLD         | 67. GOLDEN TREASURE | 92. ANGELUS          |
| 18. AMIGO            | 43. CHERIE            | 68. FANTASY         | 93. TIFFANY          |
| 19. LOS ANGELES      | 44. MOONLIGHT MADONNA | 69. GOLDBEATER      | 94. CLOUD CASTLE     |
| 20. PRAIRIE SUNSET   | 45. MINNIE COLOUITT   | 70. RED VALOR       | 95. MING YELLOW      |
| 21. CASCADE SPLENDOR | 46. EXTRAVAGANZA      | 71. PRISCILLA       | 96. GOLDEN EAGLE     |
| 22. PINK CAMEO       | 47. VIOLET SYMPHONY   | 72. SNOW CARNIVAL   | 97. MARY VERNON      |
| 23. RANGER           | 48. DEEP VELVET       | 73. WHITE WEDGEWOOD | 98. SIERRA BLUE      |
| 24. TIFFANJA         | 49. CHINA MAID        | 74. SHARKSKIN       | 99. LIGHTHOUSE       |
| 25. THE ADMIRAL      | 50. CHAMOIS           | 75. VATICAN PURPLE  | 100. PINK REFLECTION |

## *Hostas or Plantain Lilies*

The Hostas are excellent for edging borders, mass planting or in front of shrubbery. If you have a shady spot under trees that seems devoid of interest, then by all means try some of these interesting plants for they are at their best grown in such a location where their large sturdy leaves seem almost tropical in growth and very decorative. The racemes of bell like flowers of lilac, blue lavender, and white rise well above the foliage.

**HOSTA CAERULEA** The true variety has the bluest flowers of any of the Hostas. It is the next largest in size of flower to *H. plantaginea* with very round puffed out bells of lavender blue distinctly penciled on the inner surface with deeper color. The leaves are glossy green of large size and graceful form. Use for border planting with pale yellow *Hemerocallis* in the background. July-August. 3 ft. **\$1.00**

**HOSTA DECORATA** This variety has rather small oval leaves margined white and make lovely rosettes of leaves with lavender purple blooms veined white extending at right angles from two foot stalks. Early August. **\$2.00**

**HOSTA ERROMENA** A robust plant forming clumps of dark green leaves with curved veins either side of the midrib. The pale lavender flowers of bell shaped form with violet margined anthers are carried on strong scapes well above the foliage. A rare variety. July-Aug. 3 ft. **\$3.00**

**HOSTA FORTUNEI** Often this variety is confused with *H. Sieboldiana*, but it is quite different for the leaves are smaller and less glaucous and the racemes of flowers are more open and stand well above the foliage. Aug. 2 ft. **\$1.50**

**HOSTA FORTUNEI** var. *marginato alba*. The most decorative of the variegated Hostas. The large glossy green leaves with broad irregular margins of pure white are tall and arching and sweep over to the ground in the most graceful manner. Pale lavender, almost white flowers rise well above the foliage. Exceptionally lovely planted in moist shady places. July-Aug. 3 ft. **\$2.00**

**HOSTA FORTUNEI** var. *viridis marginata*. A very attractive and unusual variety with large pointed leaves of light green with a definite broad margin of dark green. The bell shaped flowers are pinkish in color and are carried on two foot scapes. July. 2 ft. **\$3.00**

**HOSTA LANCIFOLIA** var. *albo marginata*. This narrow leaved variety is a rapid grower with long light green leaves with a narrow border of pure white. The purple flowers are penciled with white and rise well above the foliage. Excellent for low border. July. 1½ ft. **\$1.00**

**HOSTA LANCIFOLIA** var. *fortis*. One of the narrow leaved varieties of later blooming habit than most of the Hostas. The medium lavender bells are more flaring and rise well above the waxy green foliage. Aug.-Sept. 2 ft. **\$1.00**

**HOSTA LANCIFOLIA TARDIFLORA**. A rare variety that is very late blooming. It is especially good for the warmer climates for often in New England the blooms are taken by the first frost. The leaves are slender and the flowering stalk is strong and sturdy with many wide open blooms of delicate lavender. Distinctive and charming. In the north plants should be heavily mulched after the ground is frozen. 18 in. **\$5.00**

**HOSTA MINOR ALBA** Dainty and charming this rare variety has pure white blooms well spaced on the strong but slender flowering stalks. Aug. 15 in. **\$3.00**

**HOSTA PLANTAGINEA** The largest flowered variety of the group with long tubular flowers of pure white carried well above the large light green leaves. The flowers are sweetly scented, and it is lovely planted on the border of a terrace. Late August. 2½ ft. **\$1.50**

**HOSTA SIEBOLDIANA** The true variety is the most rare and handsome of the Hostas. The large, broad rounded leaves are overlaid with a heavy grey blue lustre that reminds one of the thick frost crystals found on windows after a cold wintry night. The creamy pale lavender flowers have heavy substance and are borne on short clustered scapes. Plant in shade. Too much cannot be said in praise of this silvery foliage plant. June-July. 2 ft. **\$5.00**

FAIRMOUNT GARDENS

166 Fairmount Street

Lowell, Mass.

Amount Enclosed \$ \_\_\_\_\_ Date \_\_\_\_\_

Name \_\_\_\_\_

Street or R. F. D. No. \_\_\_\_\_

Post Office \_\_\_\_\_ State \_\_\_\_\_

QUANTITY	VARIETY	PRICE	

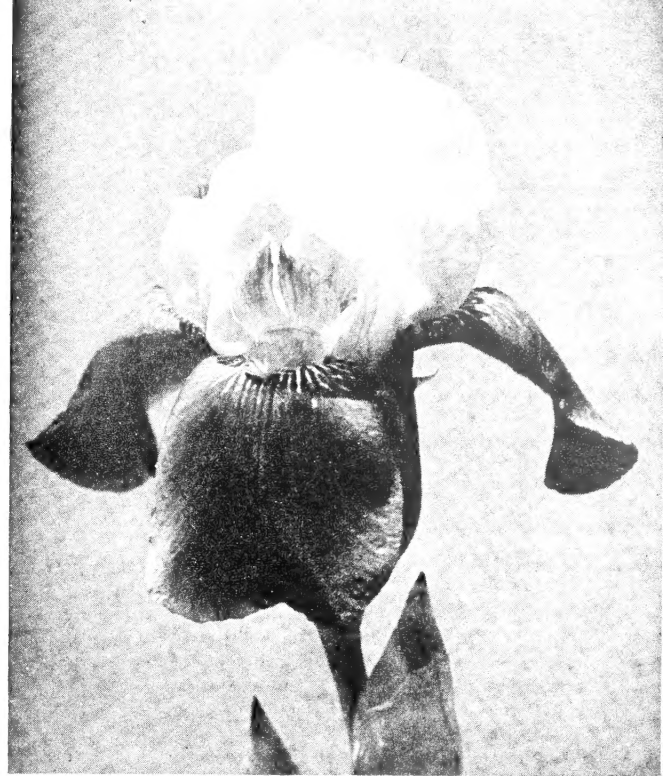
SHIPPING DATE { Ship on or about..... }  
Do not ship before..... }  
Do not ship after..... }

Orders under \$3.00 must include 25c for postage.





**CHIVALRY**

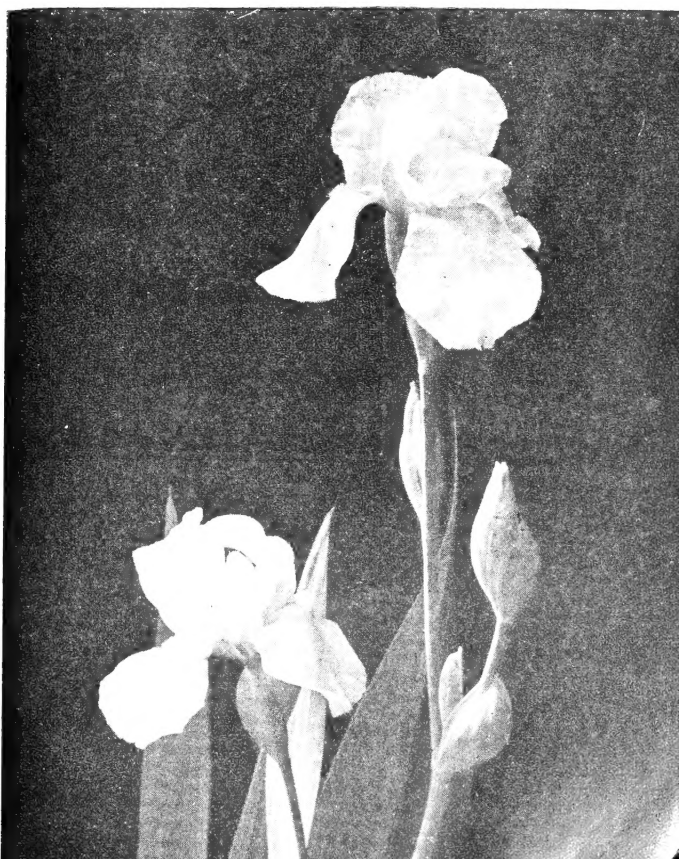


**EXTRAVAGANZA**

**SUZETTE**



**AMANDINE**





**HELEN McGREGOR**